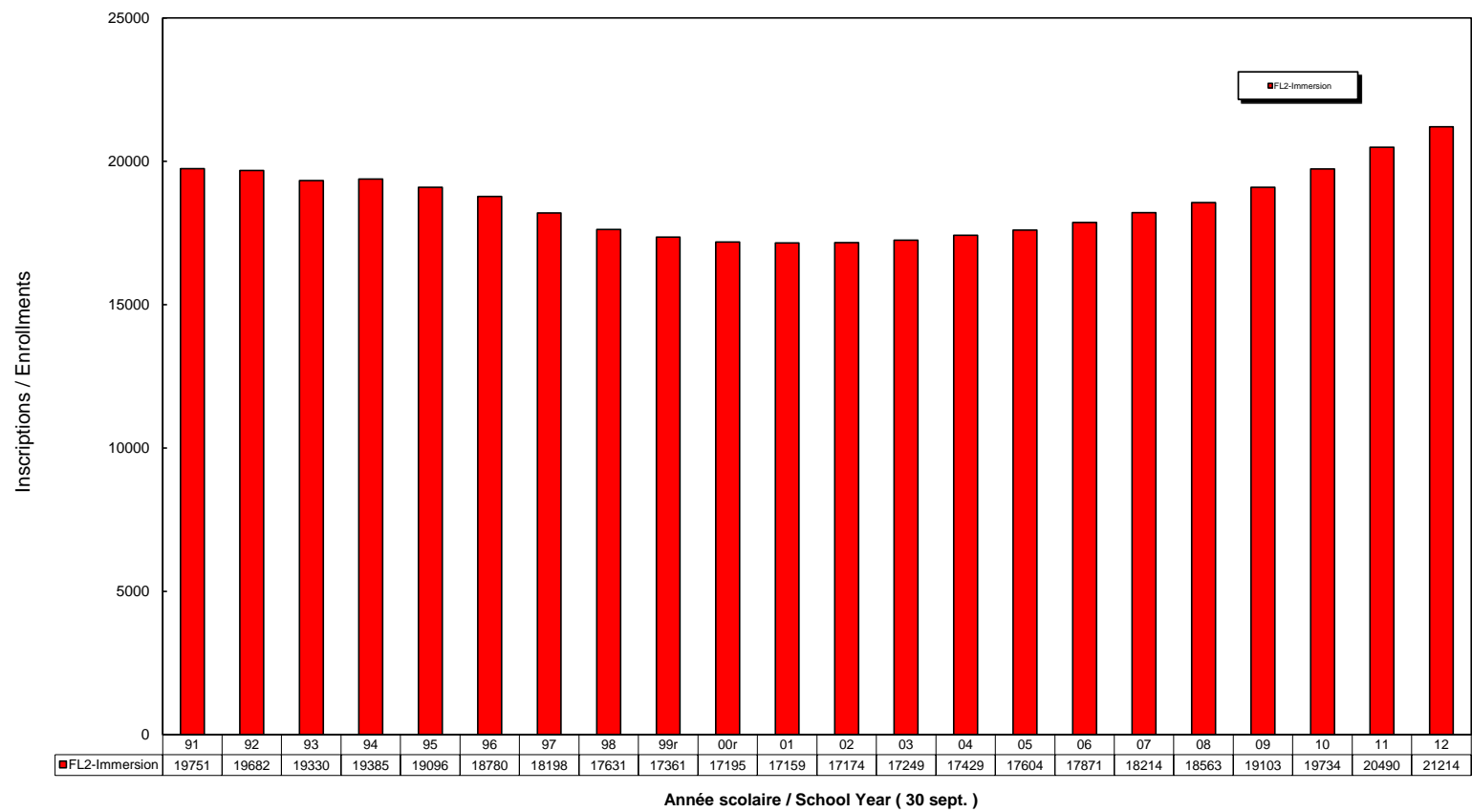
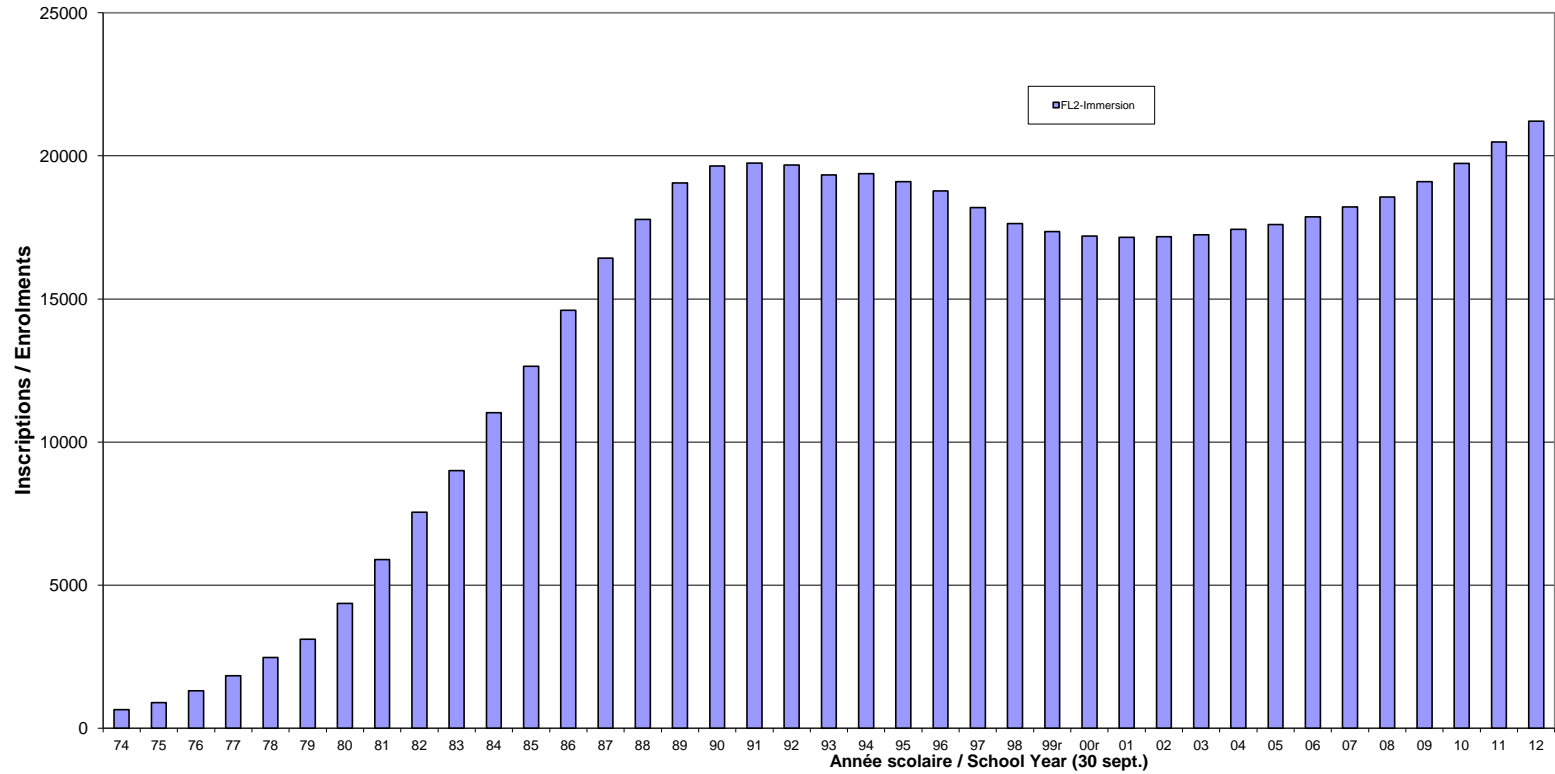


**MANITOBA - INSCRIPTIONS PROGRAMME FL2 - IMMERSION PROGRAM ENROLMENTS**  
**Années scolaires 1991/92 - 2012/13 School Years, Écoles publiques seulement / Public Schools Only**



**MANITOBA - INSCRIPTIONS PROGRAMME FL2-IMMERSION PROGRAM ENROLMENTS**  
**Années scolaires 1974-75 à 2012-13 School Years (Écoles publiques seulement / Public Schools Only)**  
(B.E.F. - Éducation Manitoba / Manitoba Education)



**MANITOBA - INSCRIPTIONS PROGRAMME FL2 - IMMERSION**  
**Années scolaires 2003-2004 à 2012-2013**

