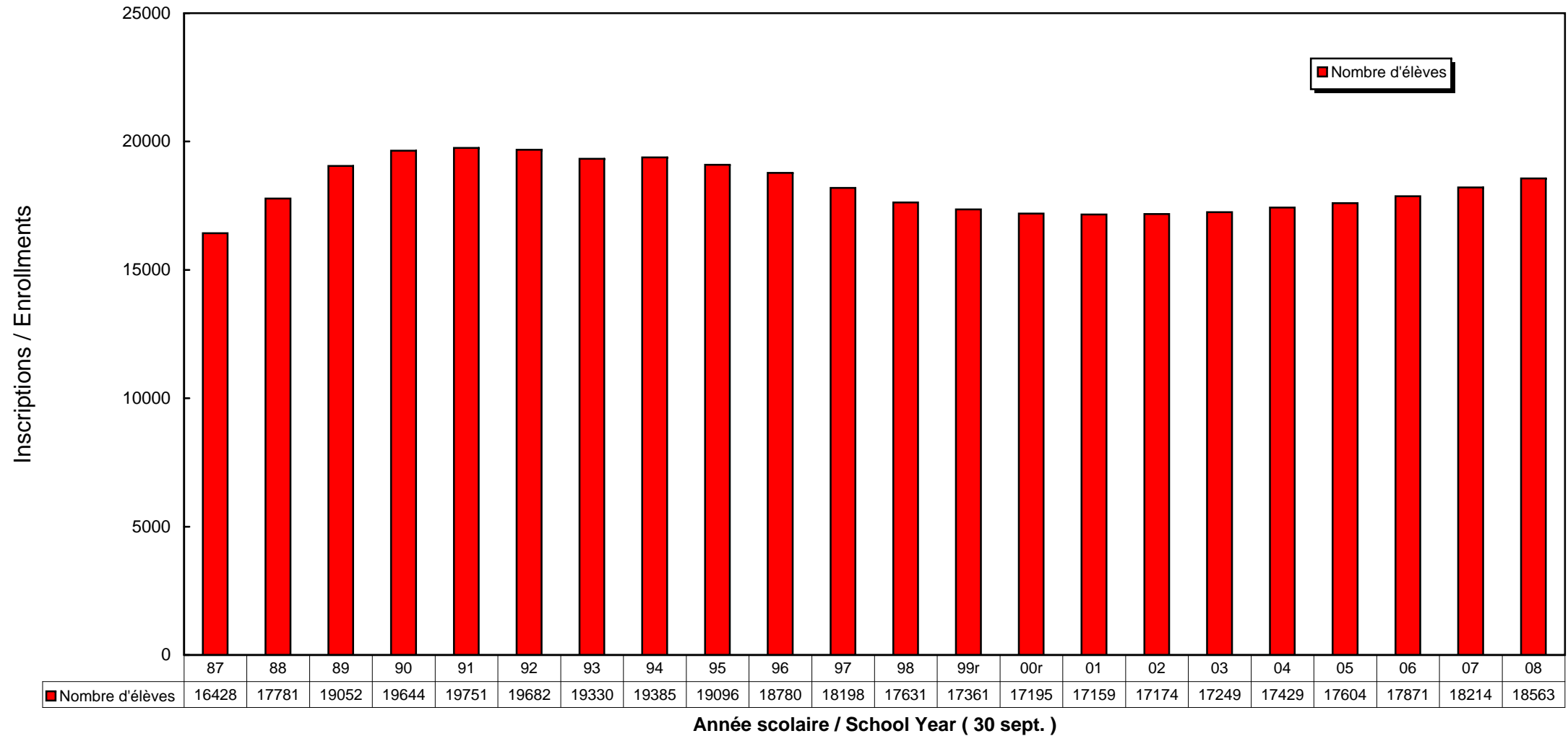
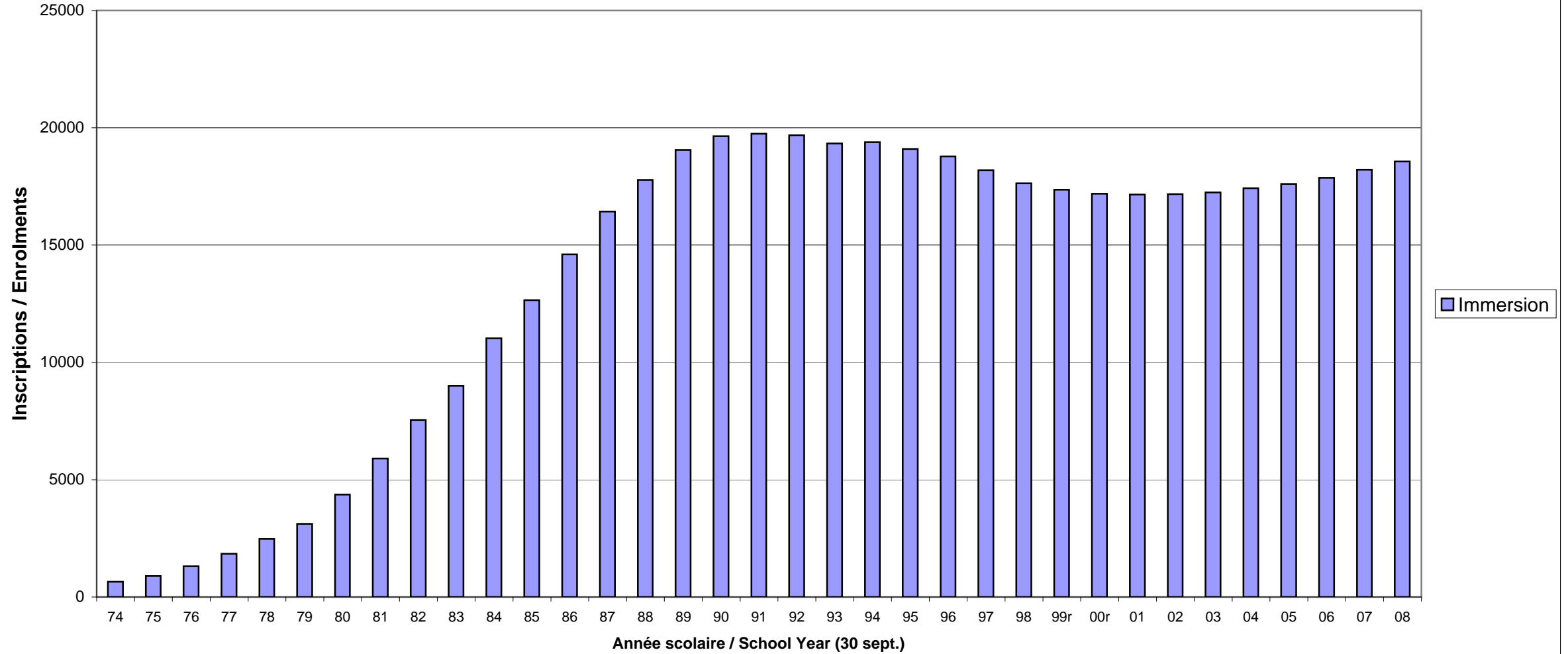


**MANITOBA - INSCRIPTIONS PROGRAMME FL2 - IMMERSION PROGRAM ENROLMENTS**  
**Années scolaires 1987/88 - 2008/09 School Years, Écoles publiques seulement / Public Schools Only**



**MANITOBA - INSCRIPTIONS PROGRAMME FL2-IMMERSION PROGRAM ENROLMENTS**  
**Années scolaires 1974-75 à 2008-09 School Years (Écoles publiques seulement / Public Schools Only)**  
(B.E.F. - Éducation, Citoyenneté et Jeunesse Manitoba / M.E.C.Y.)



**MANITOBA - INSCRIPTIONS PROGRAMME FL2 - IMMERSION PROGRAM ENROLMENTS**  
**Années scolaires 2001/02 - 2008/09 School Years, Écoles publiques seulement / Public schools only**

