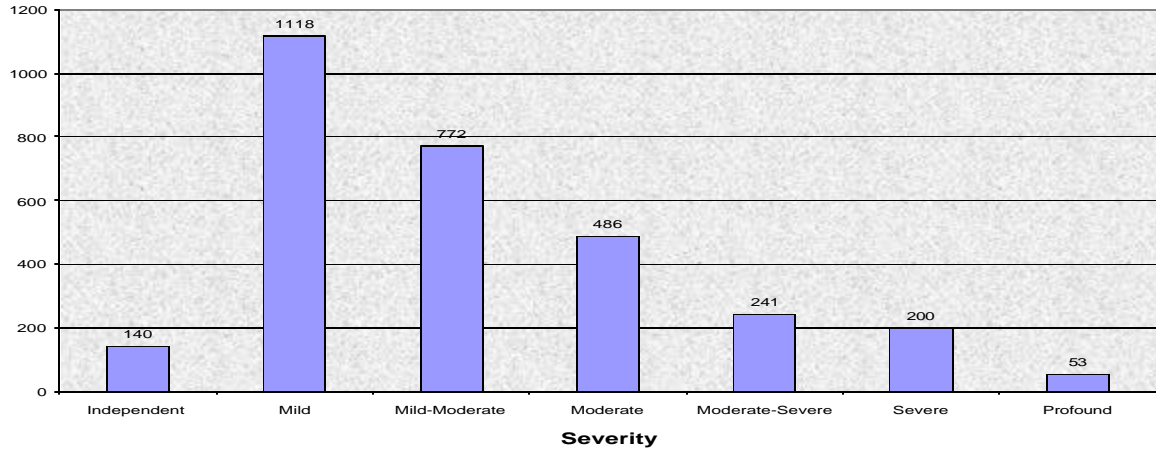
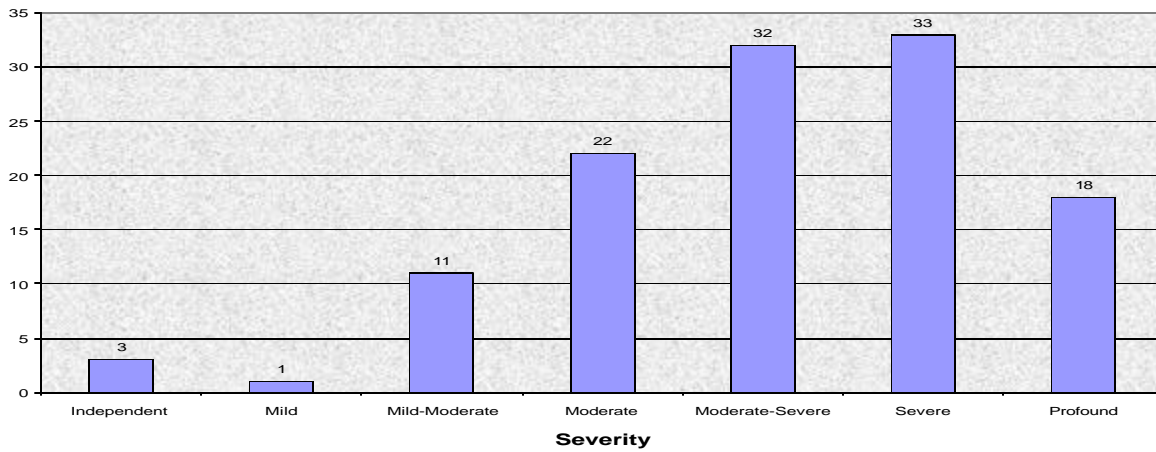


Articulation / Phonology



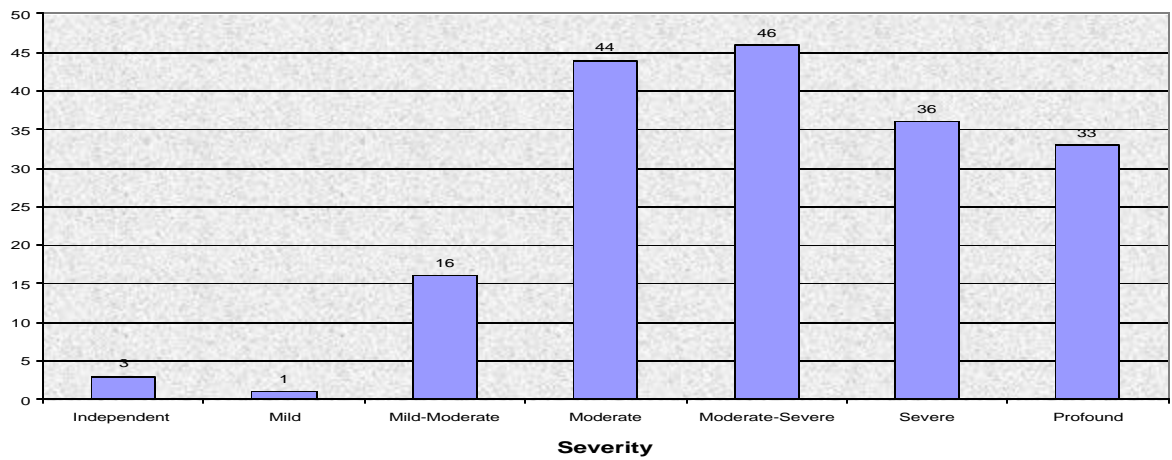
N = 3010

Augmentative / Alternative Communication Comprehension



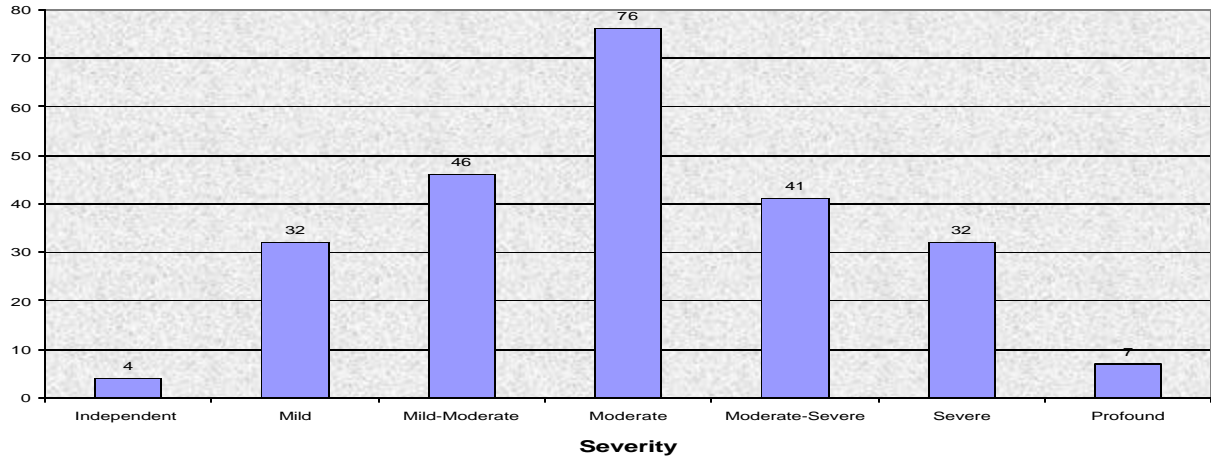
N = 120

Augmentative / Alternative Communication Production



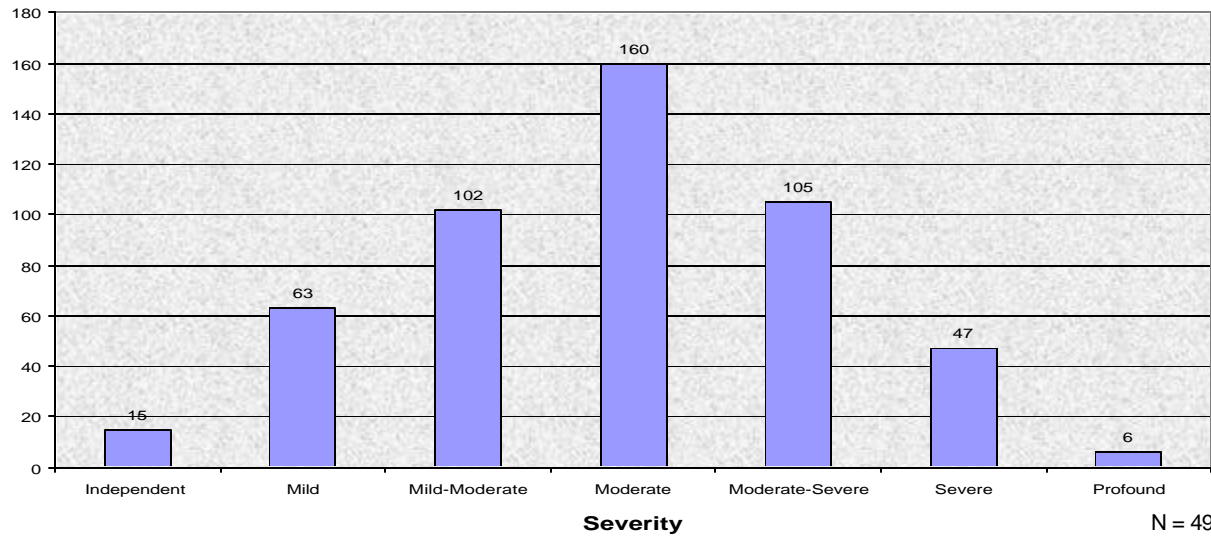
N = 179

Cognitive Orientation



N = 238

Pragmatics



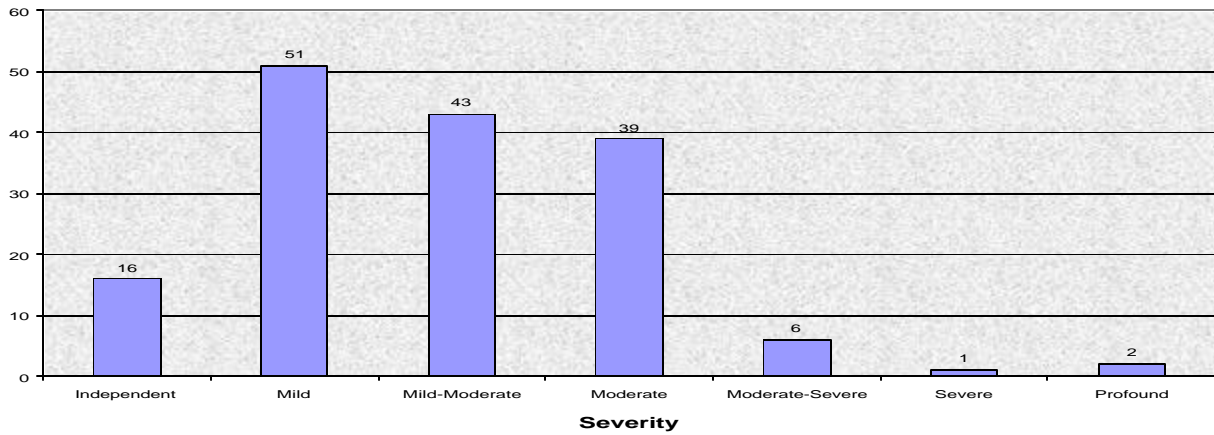
N = 498

Feeding / Swallowing



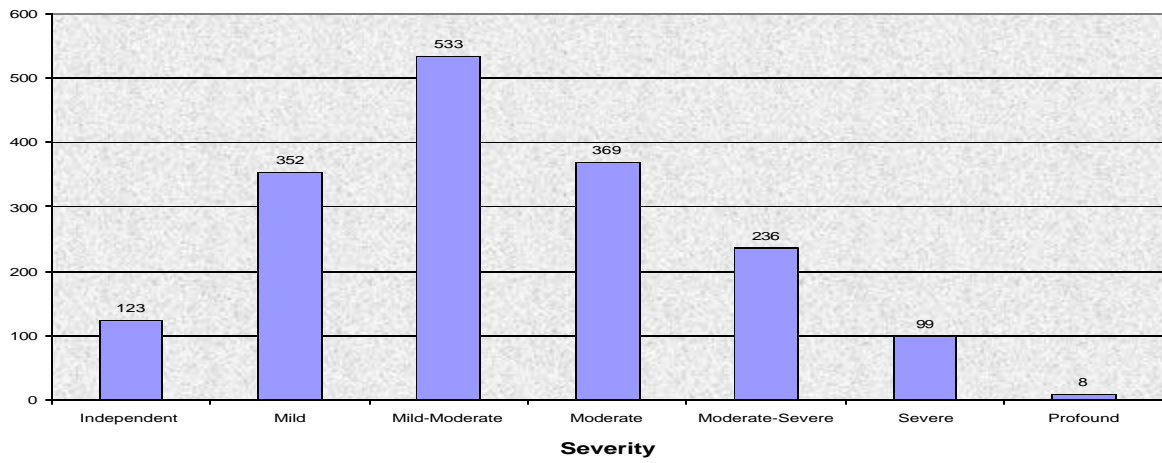
N = 28

Fluency / Rate / Rhythm



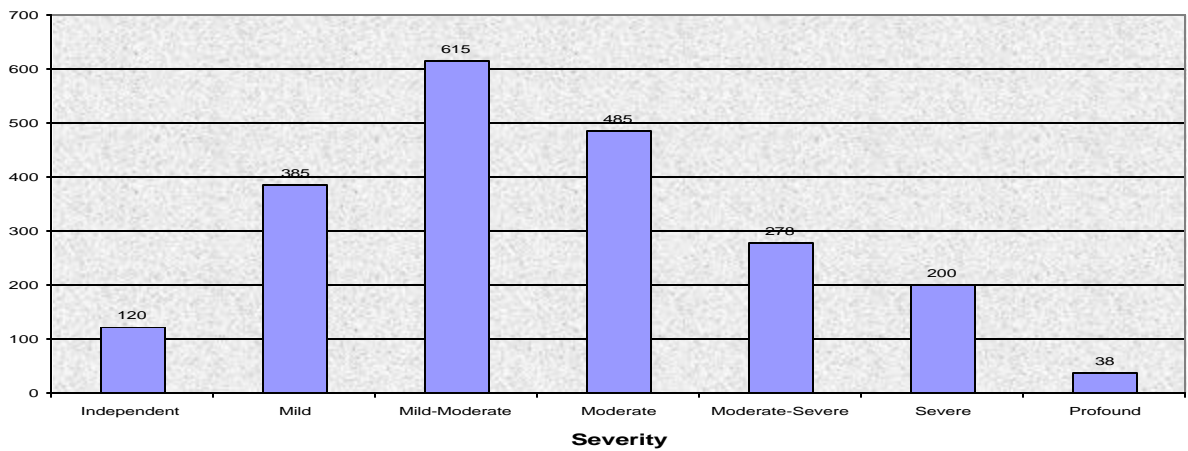
N = 158

Language Comprehension



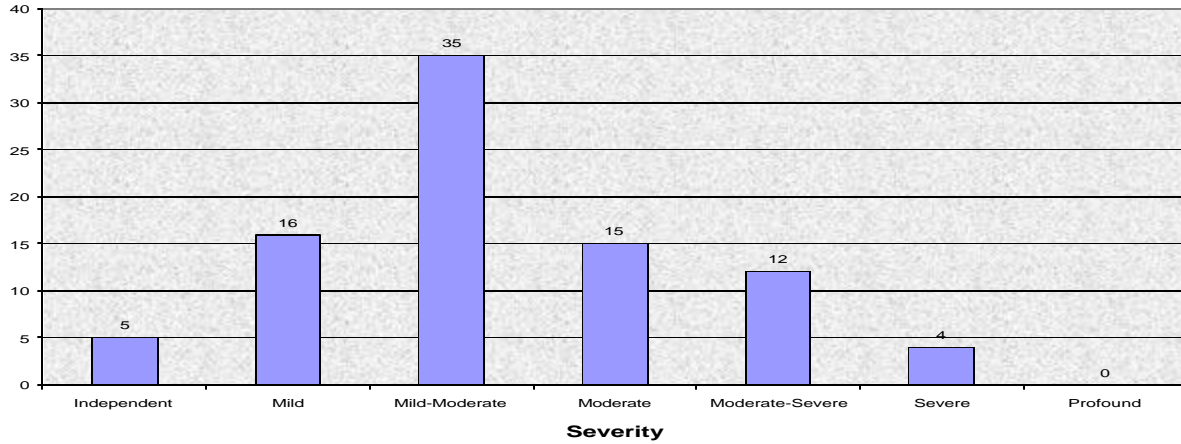
N = 1720

Language Production



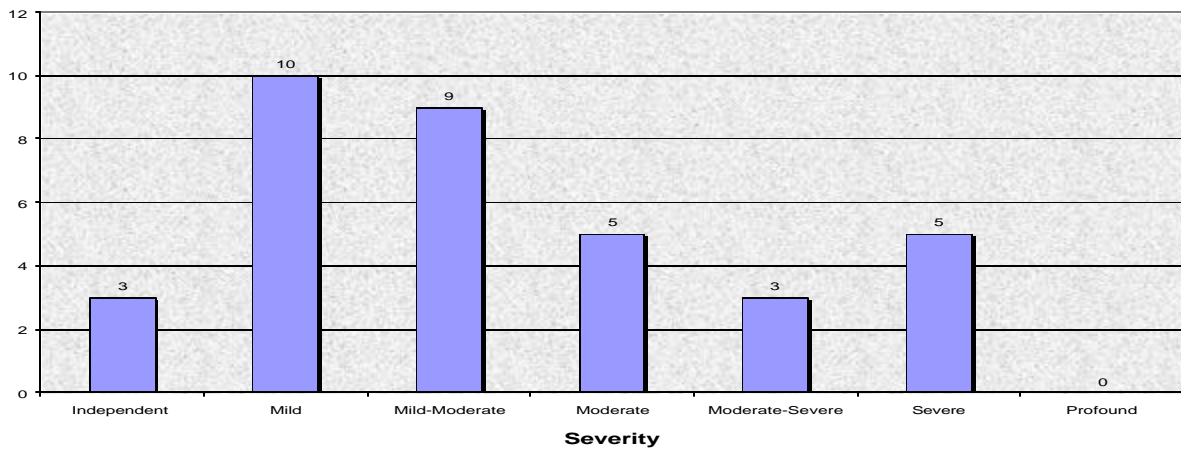
N = 2121

Voice Production



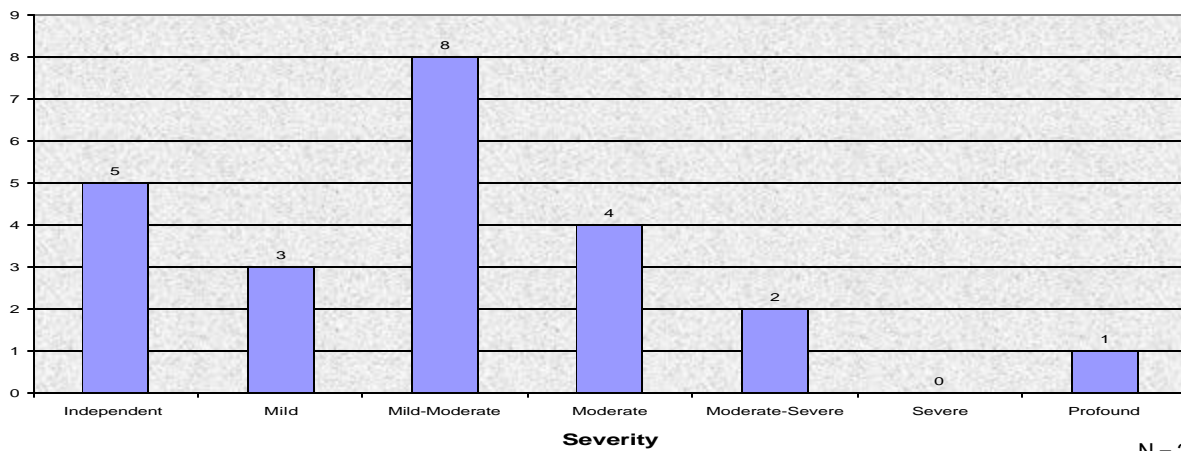
N = 87

Deaf and Hard of Hearing: Communication Strategies



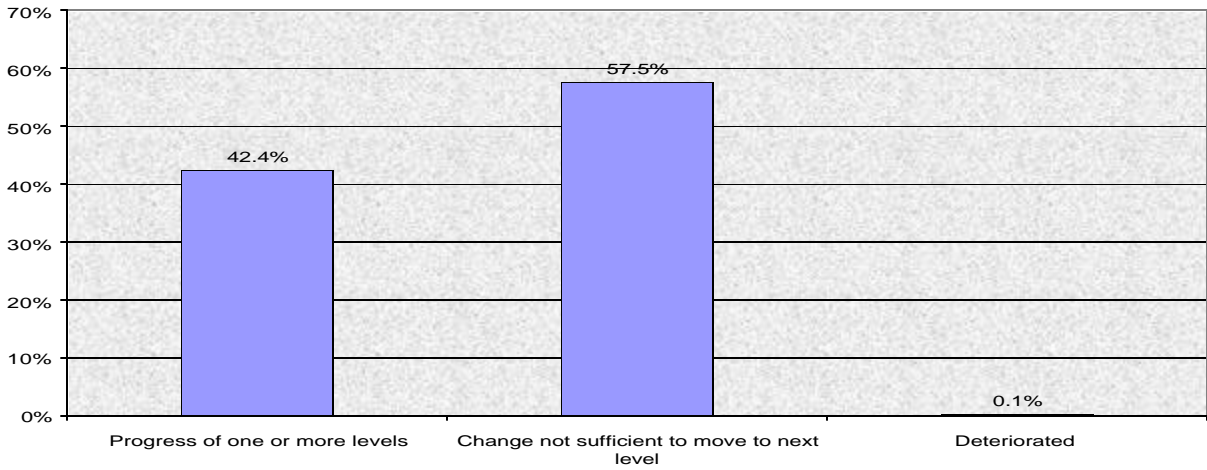
N = 35

Hearing Aids/Assistive Listening Devices: Operation & Management

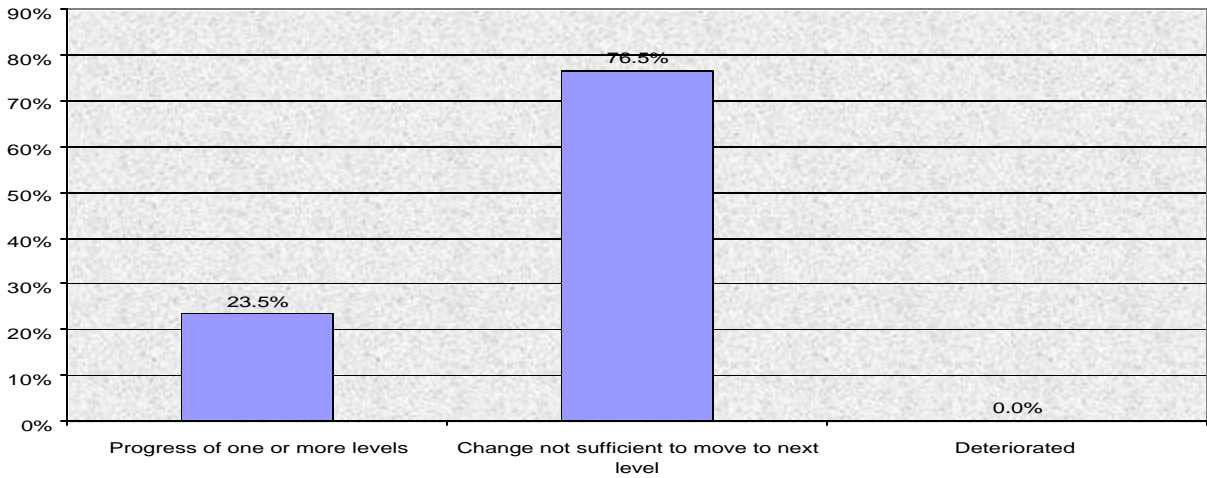


N = 23

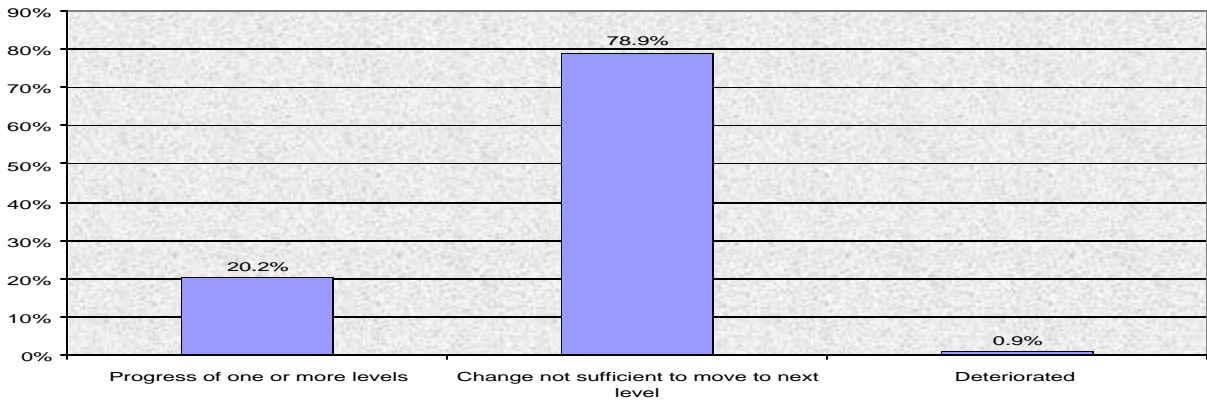
**Articulation / Phonology
Overall Outcomes**



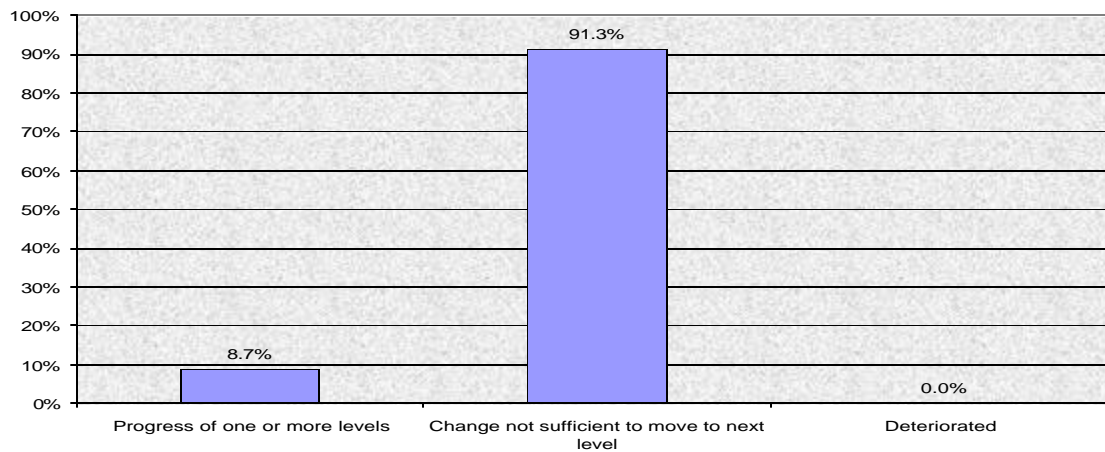
**Augmentative / Alternative Communication Comprehension
Overall Outcomes**



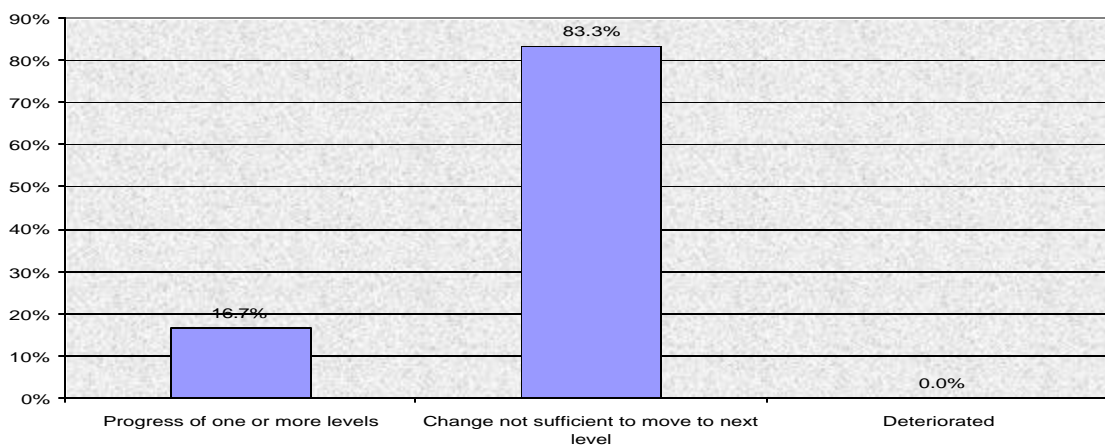
**Augmentative / Alternative Communication Production
Overall Outcomes**



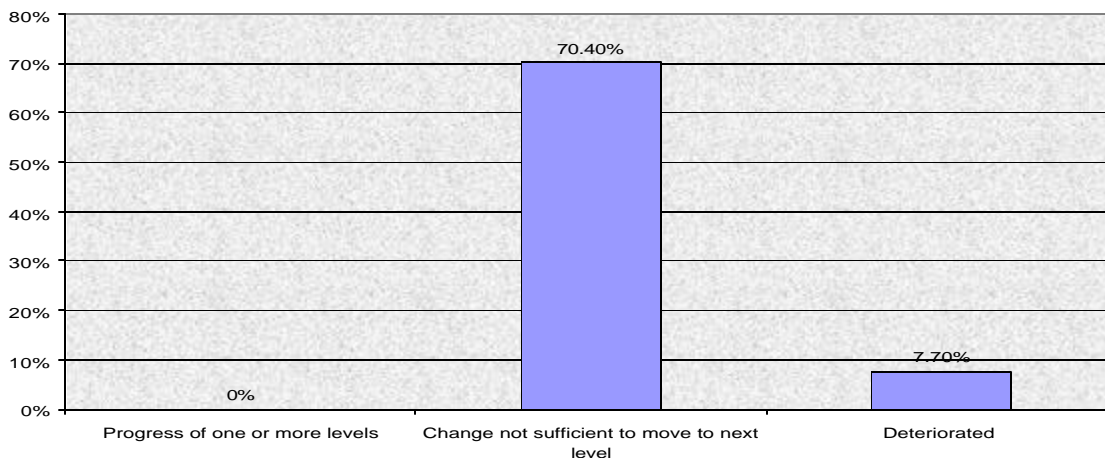
**Cognitive Orientation
Overall Outcomes**



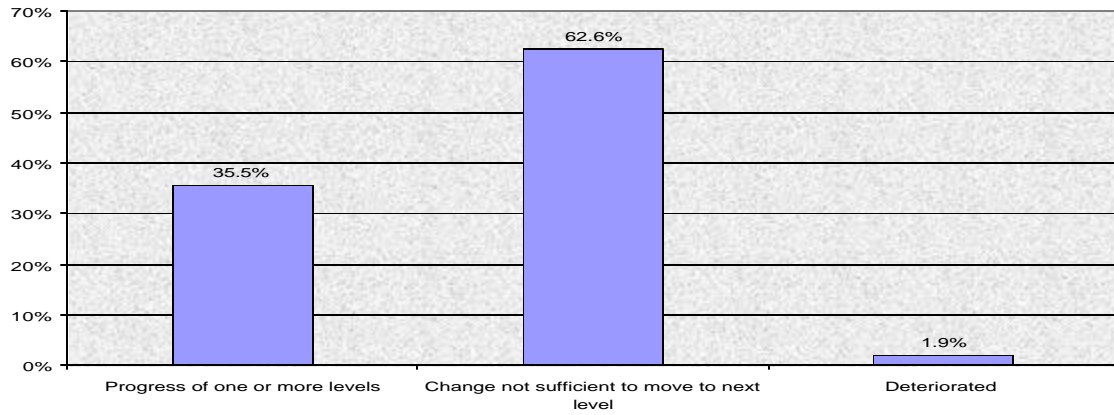
**Deaf and Hard of Hearing: Communication Strategies
Overall Outcomes**



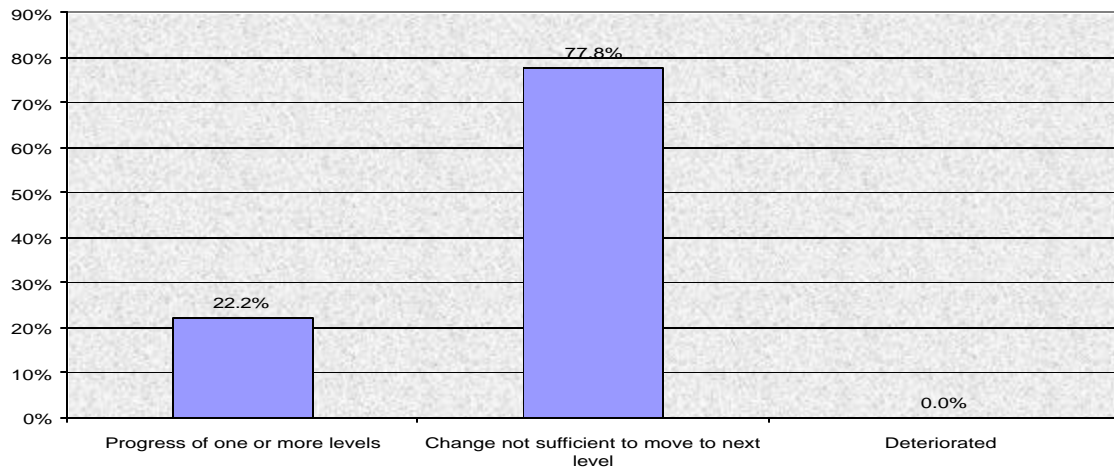
**Feeding / Swallowing
Overall Outcomes**



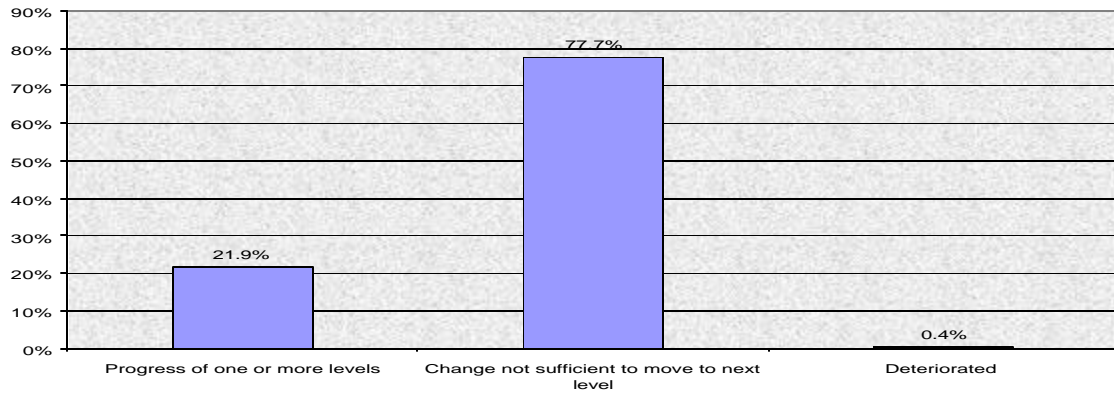
**Fluency / Rate / Rhythm
Overall Outcomes**



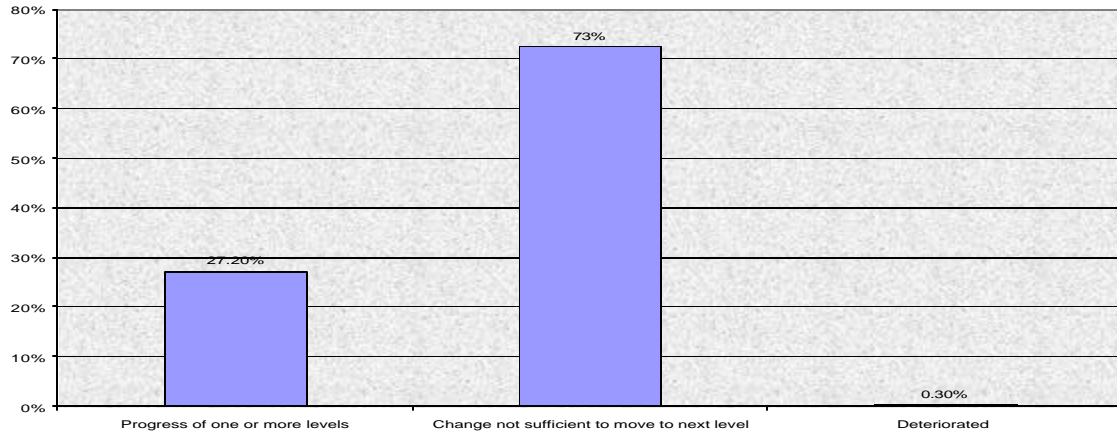
**Hearing Aids/Assistive Listening Devices: Operation & Management
Overall Outcomes**



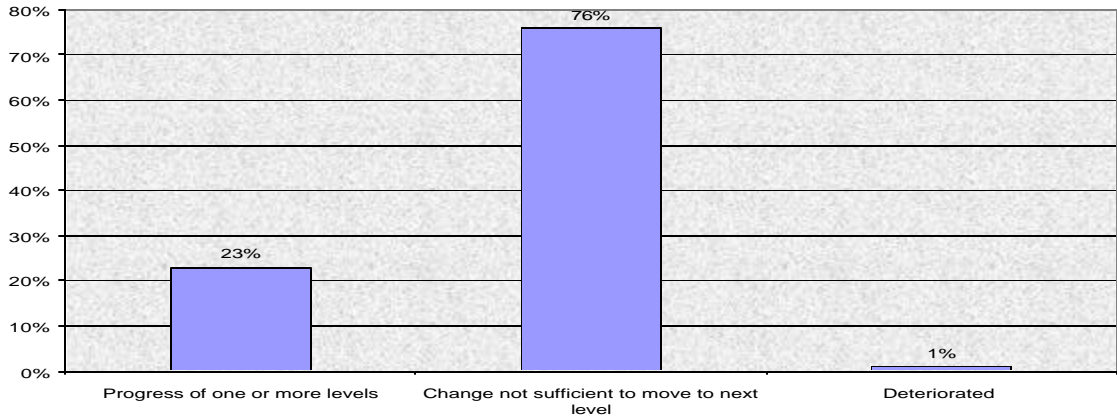
**Language Comprehension
Overall Outcomes**



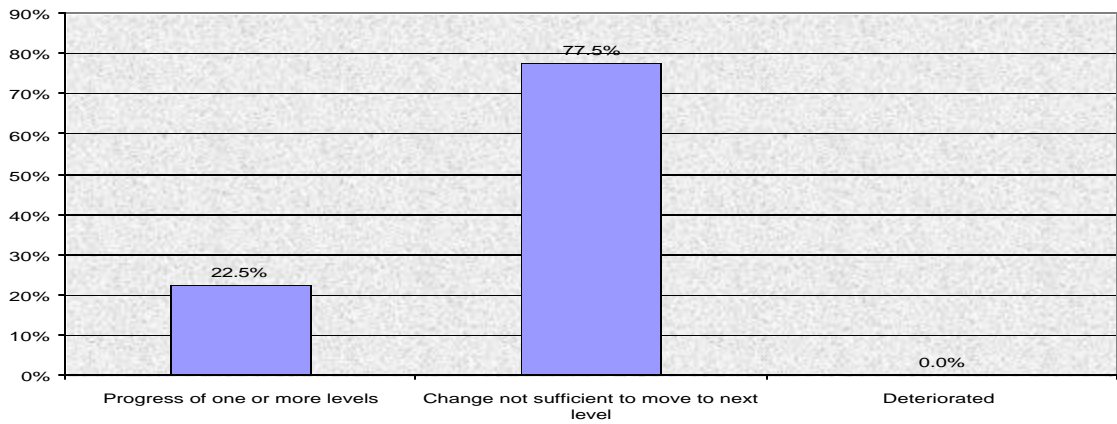
**Language Production
Overall Outcomes**



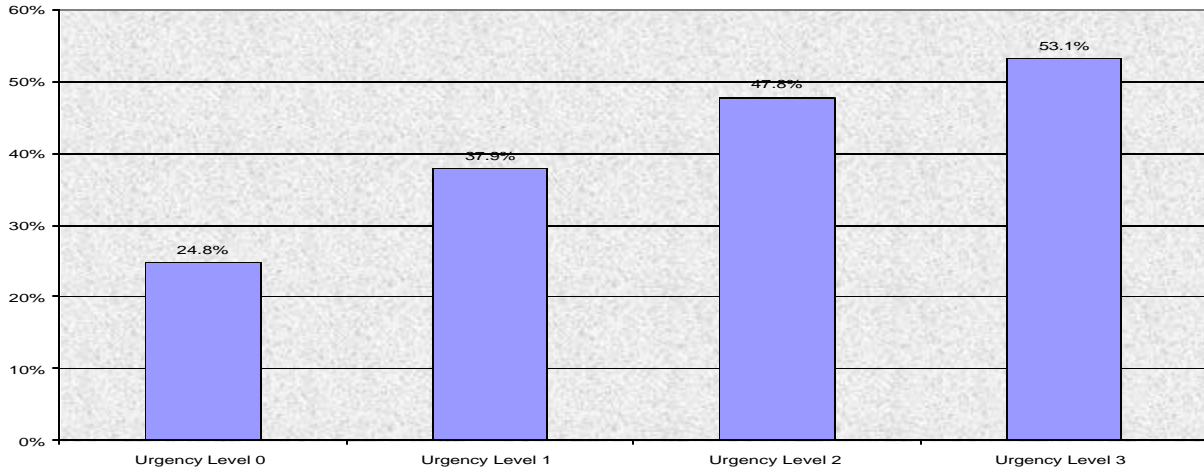
**Pragmatics
Overall Outcomes**



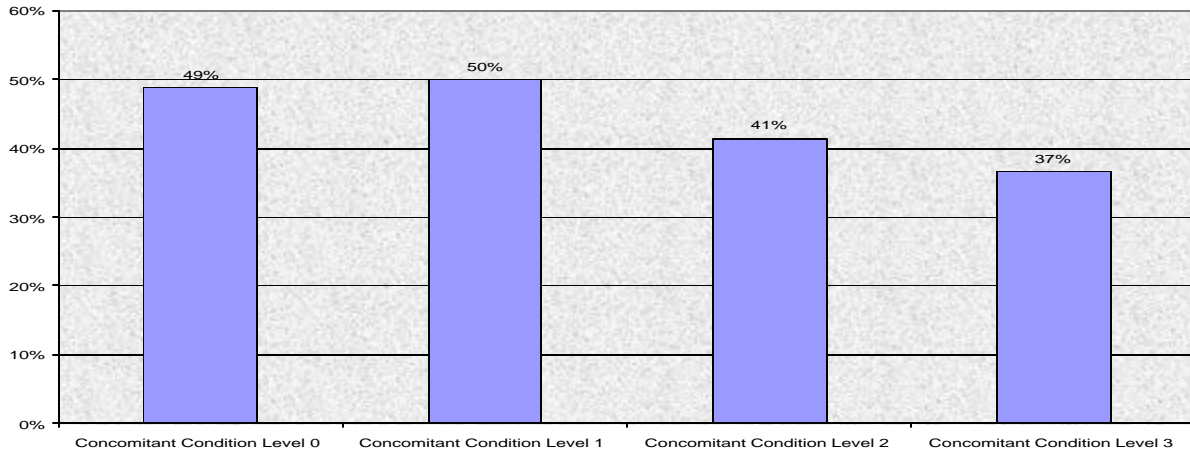
**Voice Production
Overall Outcomes**



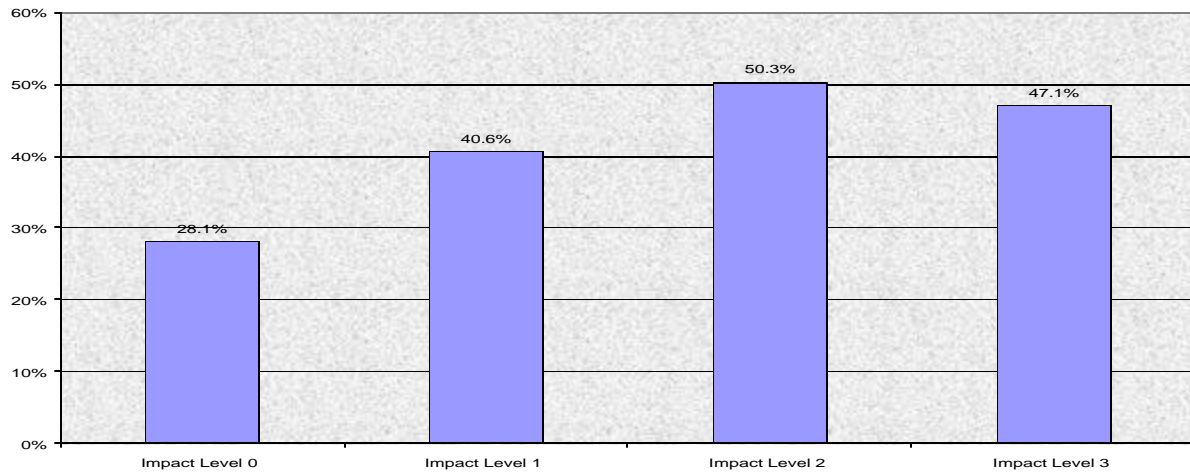
Outcomes based on "Urgency" Percent Improved



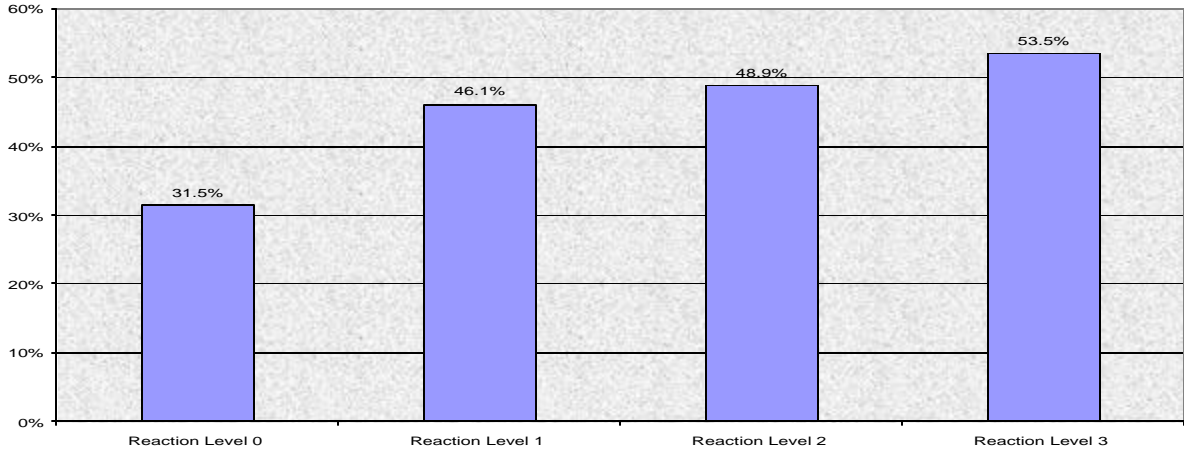
Outcomes based on "Concomitant Condition" Percent Improved



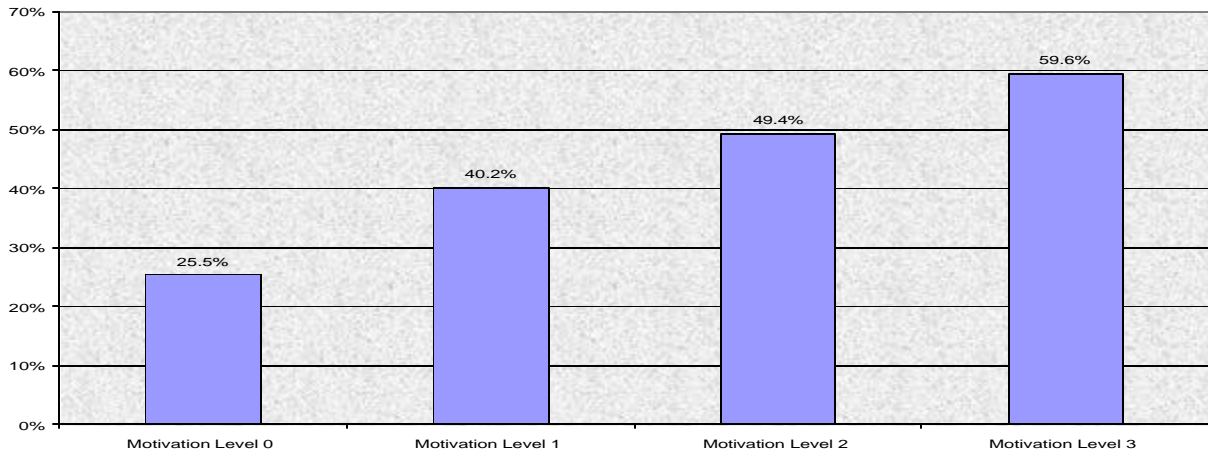
Outcomes based on "Impact" Percent Improved



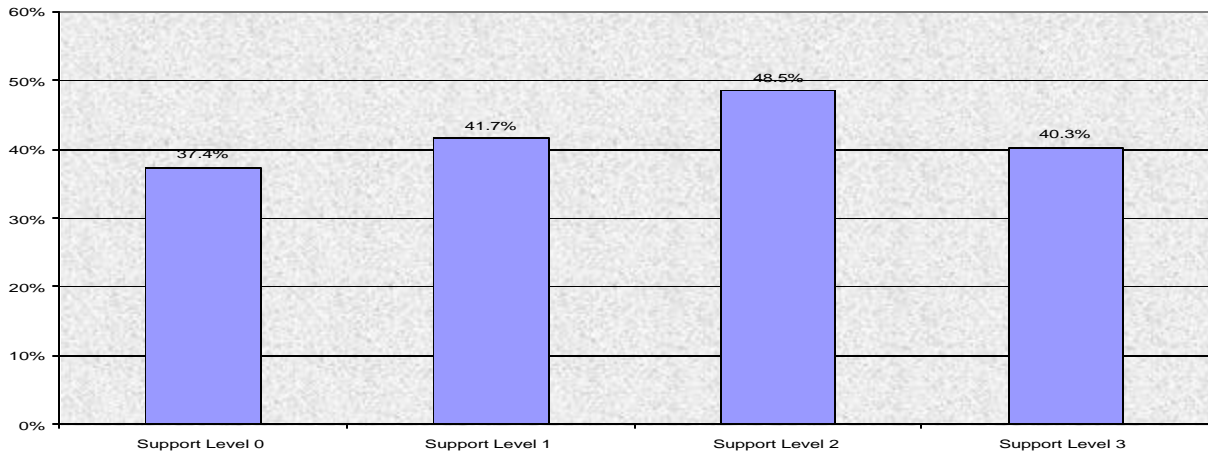
**Outcomes based on "Reaction"
Percent Improved**



**Outcomes based on "Motivation"
Percent Improved**



**Outcomes based on "Support"
Percent Improved**



**Outcomes based on "Prognosis"
Percent Improved**

