

Grade 12
Pre-Calculus Mathematics
Achievement Test

Booklet 2

June 2015

Manitoba Education and Advanced Learning Cataloguing in Publication Data

Grade 12 pre-calculus mathematics achievement test.
Booklet 2. June 2015 [electronic resource]

ISBN: 978-0-7711-5851-3

1. Mathematics—Examinations, questions, etc.
 2. Educational tests and measurements—Manitoba.
 3. Mathematics—Study and teaching (Secondary)—Manitoba.
 4. Precalculus—Study and teaching (Secondary)—Manitoba.
 5. Mathematical ability—Testing.
- I. Manitoba. Manitoba Education and Advanced Learning.
510.76

Manitoba Education and Advanced Learning
School Programs Division
Winnipeg, Manitoba, Canada

Permission is hereby given to reproduce this document for non-profit educational purposes provided the source is cited.

After the administration of this test, print copies of this resource will be available for purchase from the Manitoba Text Book Bureau. Order online at <www.mtbb.mb.ca>.

This resource will also be available on the Manitoba Education and Advanced Learning website at <www.edu.gov.mb.ca/k12/assess/archives/index.html>.

Websites are subject to change without notice.

Disponible en français.

Available in alternate formats upon request.

Instructions

Selected Response Questions

- There are 9 questions each worth one mark.
- Calculators are **not** allowed for this part of the test.
- You may use the spaces beside each question for rough work.
- Provide only one answer per question.
- There is no penalty for guessing.
- Record your answers on the sheet provided.

Constructed Response Questions

- There are 20 questions worth a total of 50 marks.
- Calculators are **not** allowed for this part of the test.
- For full marks, your answer must show all pertinent diagrams, calculations, and explanations.
- Your solutions should be neat, clear, and well organized.
- Write each solution in the space provided.

No marks will be awarded for work done on this page.

Question 14

1 mark

There are 2 types of pencils, 3 colours of highlighters, and 5 styles of pens.

If you must select one of each to form a set, how many different sets of writing instruments are possible?

- a) 10
- b) 11
- c) 25
- d) 30

Question 15

1 mark

The point $P(\theta)$ lies on the unit circle. What are the coordinates of the point P if $\theta = 120^\circ$?

- a) $\left(-\frac{1}{2}, \frac{\sqrt{3}}{2}\right)$
- b) $\left(-\frac{\sqrt{3}}{2}, -\frac{1}{2}\right)$
- c) $\left(-\frac{\sqrt{3}}{2}, \frac{1}{2}\right)$
- d) $\left(\frac{1}{2}, \frac{\sqrt{3}}{2}\right)$

Question 16**1 mark**

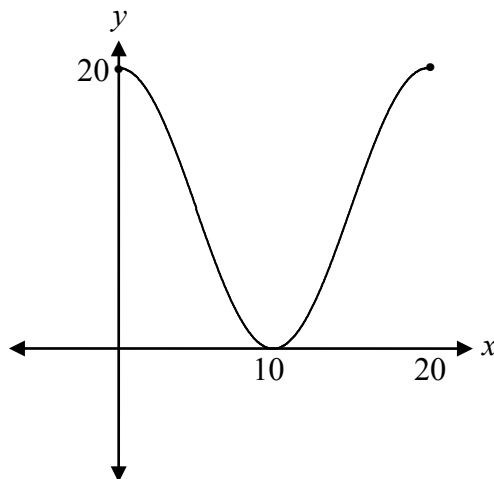
Identify the function that has a domain of $\{x|x \geq 7\}$ and a range of $\{y|y \geq 0\}$.

- a) $f(x) = \sqrt{x} + 7$
- b) $f(x) = \sqrt{x} - 7$
- c) $f(x) = \sqrt{x+7}$
- d) $f(x) = \sqrt{x-7}$

Question 17**1 mark**

Using $y = -10 \cos[B(x - C)] + D$, the value of C that corresponds to the following graph is:

- a) 5
- b) 10
- c) 15
- d) 20



Question 18

1 mark

Given the following row of Pascal's Triangle, identify the binomial expansion with these coefficients.

1 5 10 10 5 1

a) $(x + y)^4$

b) $(x + y)^5$

c) $(x + y)^6$

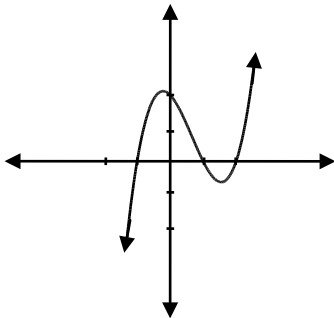
d) $(x + y)^7$

Question 19

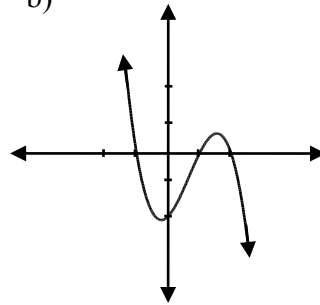
1 mark

Identify the graph of the function $f(x) = -(x - 2)(x - 1)^2(x + 1)$.

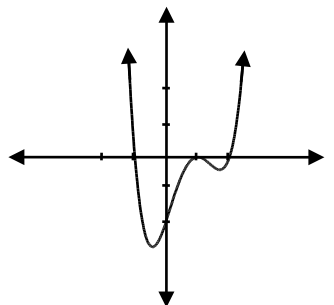
a)



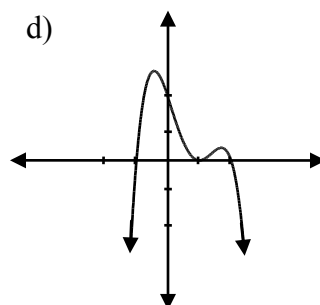
b)



c)



d)



Question 20**1 mark**

Determine the value of $\log_9(\log_3 27)$.

- a) $\frac{1}{3}$
- b) $\frac{1}{2}$
- c) 2
- d) 3

Question 21**1 mark**

If (x, y) is a point on the graph of $y = f(x)$, identify the coordinates of this point on the graph of $g(x) = f(2x) + 5$.

- a) $\left(\frac{x}{2}, y + 5\right)$
- b) $(2x, y + 5)$
- c) $\left(\frac{x}{2}, y - 5\right)$
- d) $\left(\frac{x}{2} - 5, y\right)$

Question 22

1 mark

Identify an equivalent expression for $1 + \log_2 5$.

- a) $\log_2 5$
- b) $\log_2 7$
- c) $\log_2 10$
- d) $\log_2 11$

Solve:

$$2\log_4 x - \log_4(x + 3) = 1$$

The following transformations are applied to $f(x)$, resulting in a new function, $g(x)$.

- reflection over the y -axis
- horizontal translation of 3 units to the right
- vertical translation of 4 units down

Write the equation of $g(x)$ in terms of $f(x)$.

$$g(x) = \underline{\hspace{15em}}$$

Question 25

a) 3 marks b) 1 mark

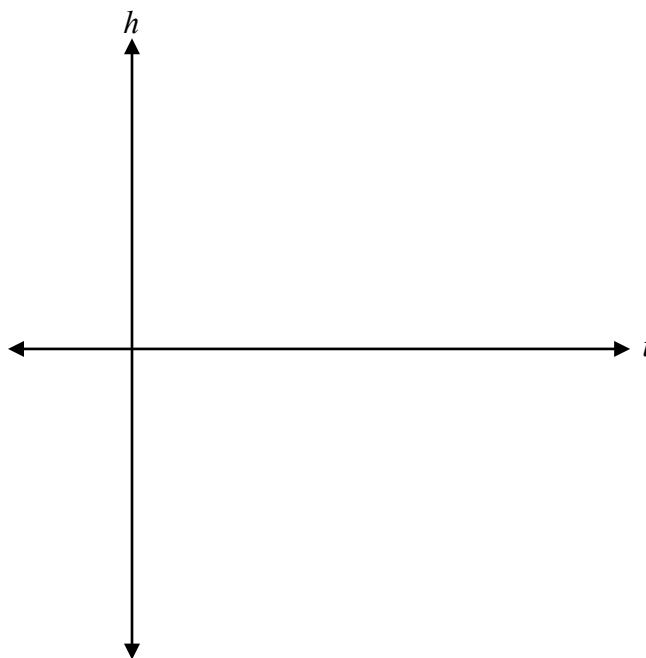
116
117

The height of a bicycle pedal as the bicycle is moving at a constant speed can be represented by the following function:

$$h(t) = 15 \cos \frac{2\pi}{5} t + 30$$

where h is the height of the pedal above the ground, in cm, and t is the time, in seconds.

a) Sketch a graph of at least one period of this function, where $t \geq 0$.



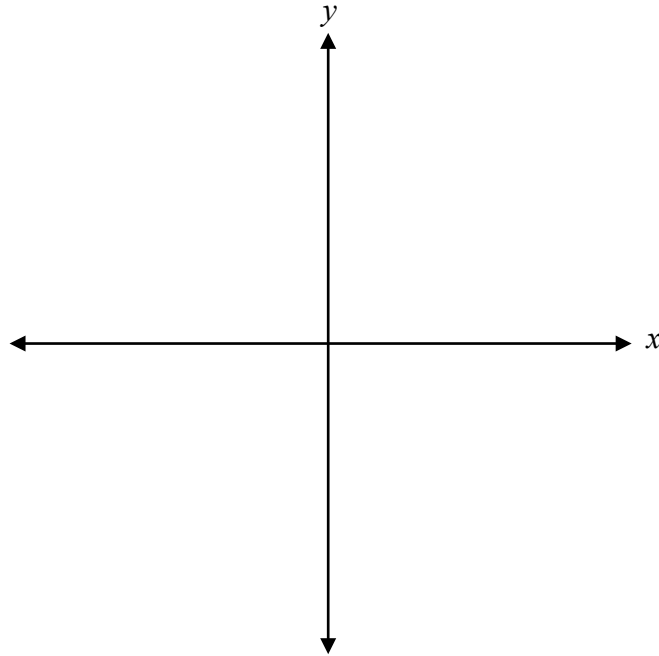
b) Determine the height of the bicycle pedal at 7.5 seconds.

Question 26

4 marks 118

Sketch the graph of the function $f(x)$ and determine the y -intercept.

$$f(x) = \frac{4}{(x-2)(x+2)}$$



y -intercept: _____

Kim solved the following logarithmic equation:

$$\log_2\left(-\frac{x}{3}\right) = \log_2(x - 4)$$

$$-\frac{x}{3} = x - 4$$

$$-x = 3x - 12$$

$$-4x = -12$$

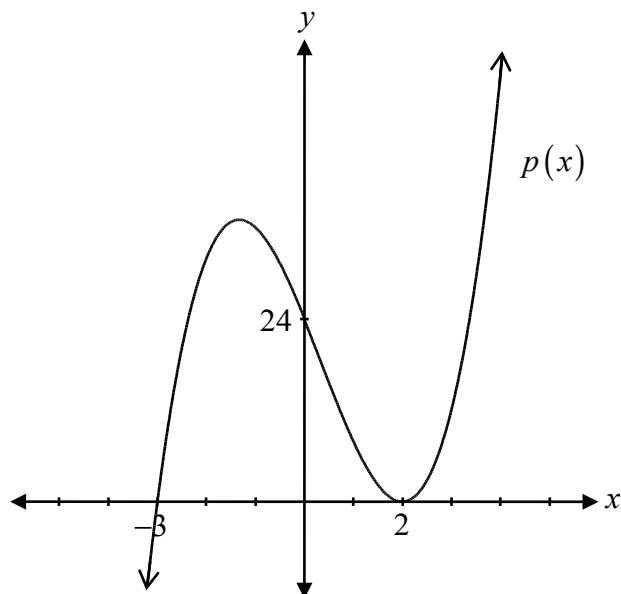
$$\cancel{x = 3}$$

Explain why $x = 3$ is an extraneous solution.

Question 28

3 marks 120

Determine the equation of the polynomial function represented by the graph.



$p(x) =$ _____

Determine the coterminal angles with $\frac{2\pi}{3}$ over the interval $[-2\pi, 4\pi]$.

Question 30

a) 1 mark b) 1 mark

122
123

a) Solve the following equation:

$$0 = \sqrt{4x - 8} - 2$$

b) Explain how your answer in a) is related to the graph of $y = \sqrt{4x - 8} - 2$.

Determine the exact value of $\sin \frac{13\pi}{12}$.

Question 32

a) 2 marks b) 1 mark

125
126

Given the functions $f(x) = x + 2$ and $g(x) = \frac{1}{x-5}$:

- a) Determine the equation of the composite function $f(g(x))$ and its domain.

$f(g(x)) =$ _____

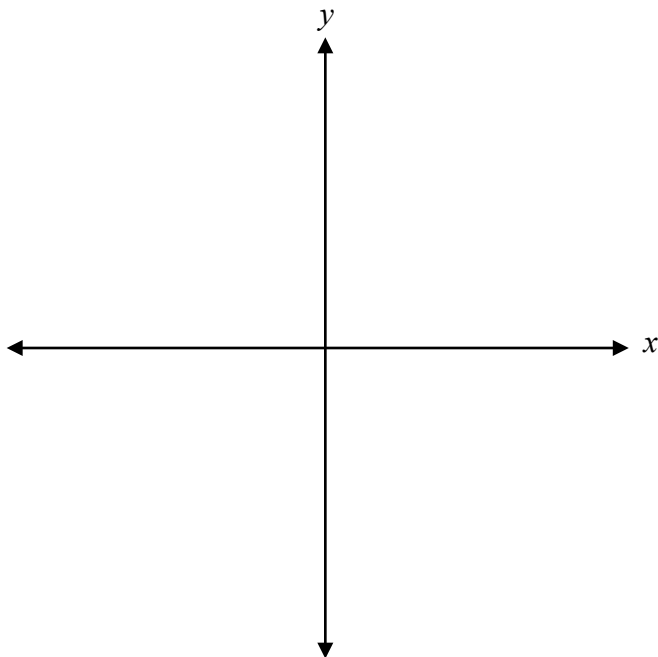
domain: _____

- b) Determine the x -intercept and y -intercept of $f(g(x))$.

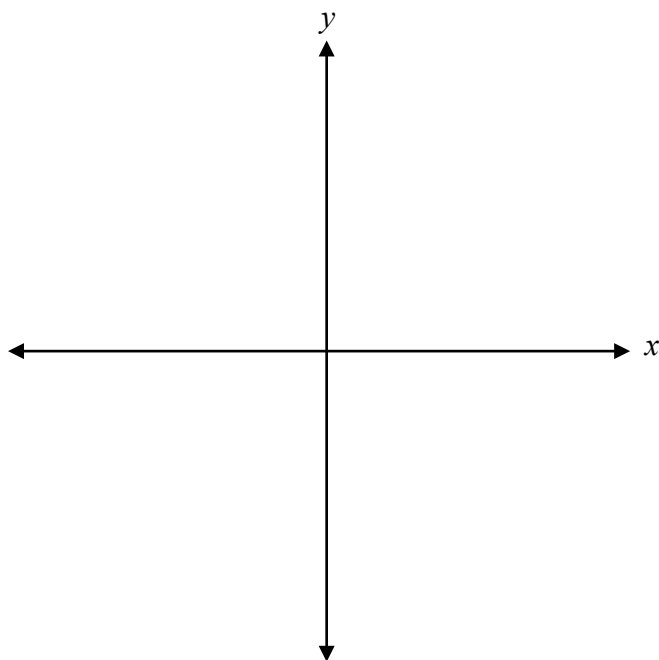
x -intercept: _____

y -intercept: _____

a) Sketch the graph of $f(x) = \log_5(x-1)$.



b) Sketch the graph of $f^{-1}(x)$.



Question 34

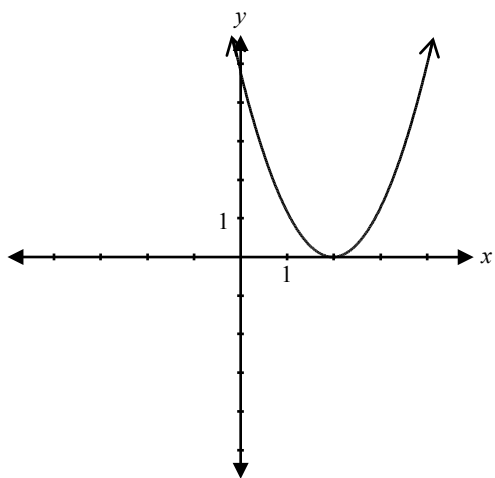
1 mark 129

Explain what the graph of a rational function looks like near a vertical asymptote.

Question 35

1 mark 130

Given the graph of $f(x) = (x - 2)^2$,



determine one possible restriction for the domain of $f(x)$ so that its inverse is a function.

Domain: _____

Question 36

2 marks 131

Over the interval $[0, 2\pi]$, determine the non-permissible values of θ in the expression $\csc \theta(\cos \theta + 1)$.

Question 37

1 mark 132

Explain why ${}_3C_8$ is undefined.

Solve:

$${}_n P_3 = 48(n - 1)$$

Question 39

a) 2 marks b) 1 mark c) 1 mark

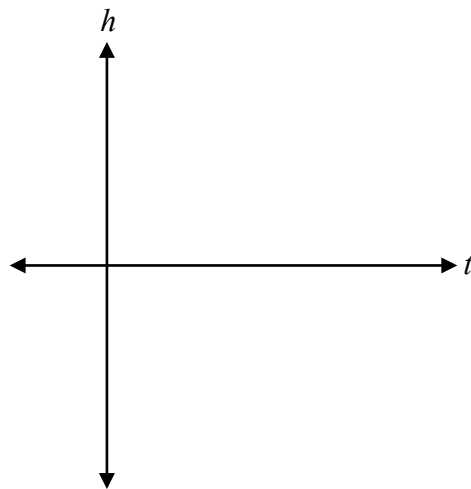
134
135
136

Christine dives off a diving board.

Her dive is modelled by the function $h(t) = t^3 - 3t^2 - t + 3$, where h is her height in metres, relative to the water surface and t is the time in seconds after diving off the diving board.

a) Given that $(t + 1)$ is a factor for the function $h(t)$, determine the other factors.

b) Sketch the graph of the function $h(t)$ for the time interval $t = 0$ to $t = 3$.



c) Determine how many seconds Christine is underwater.

Question 40

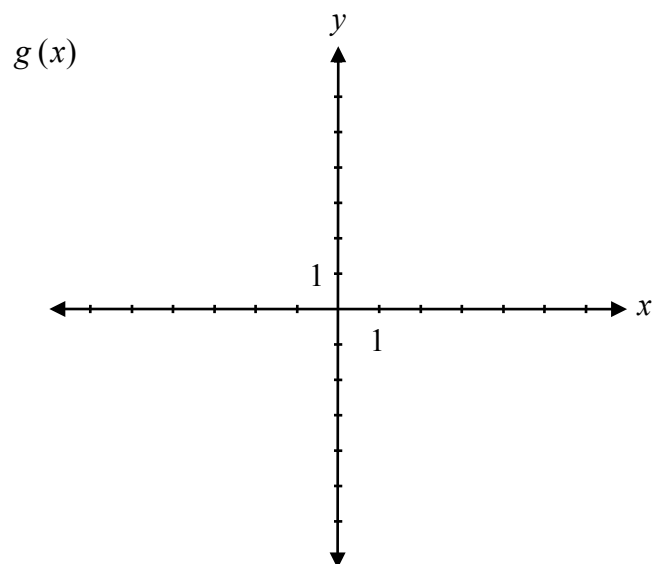
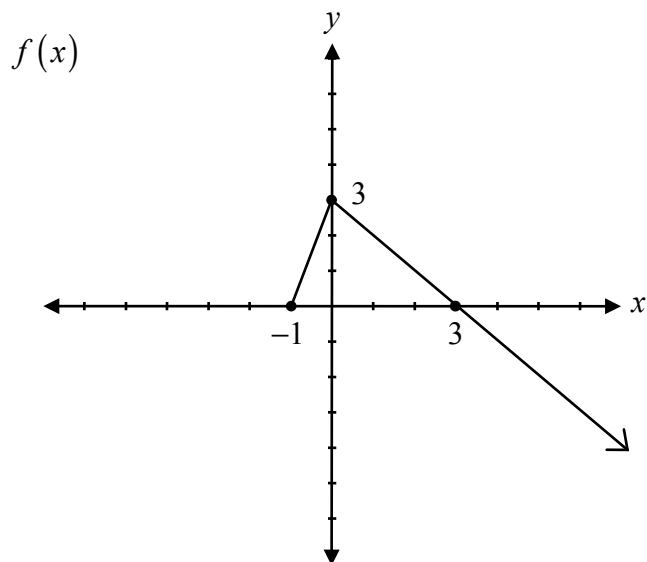
3 marks 137

Prove the identity for all permissible values of x .

$$\sec x + \tan x = \frac{\cos x}{1 - \sin x}$$

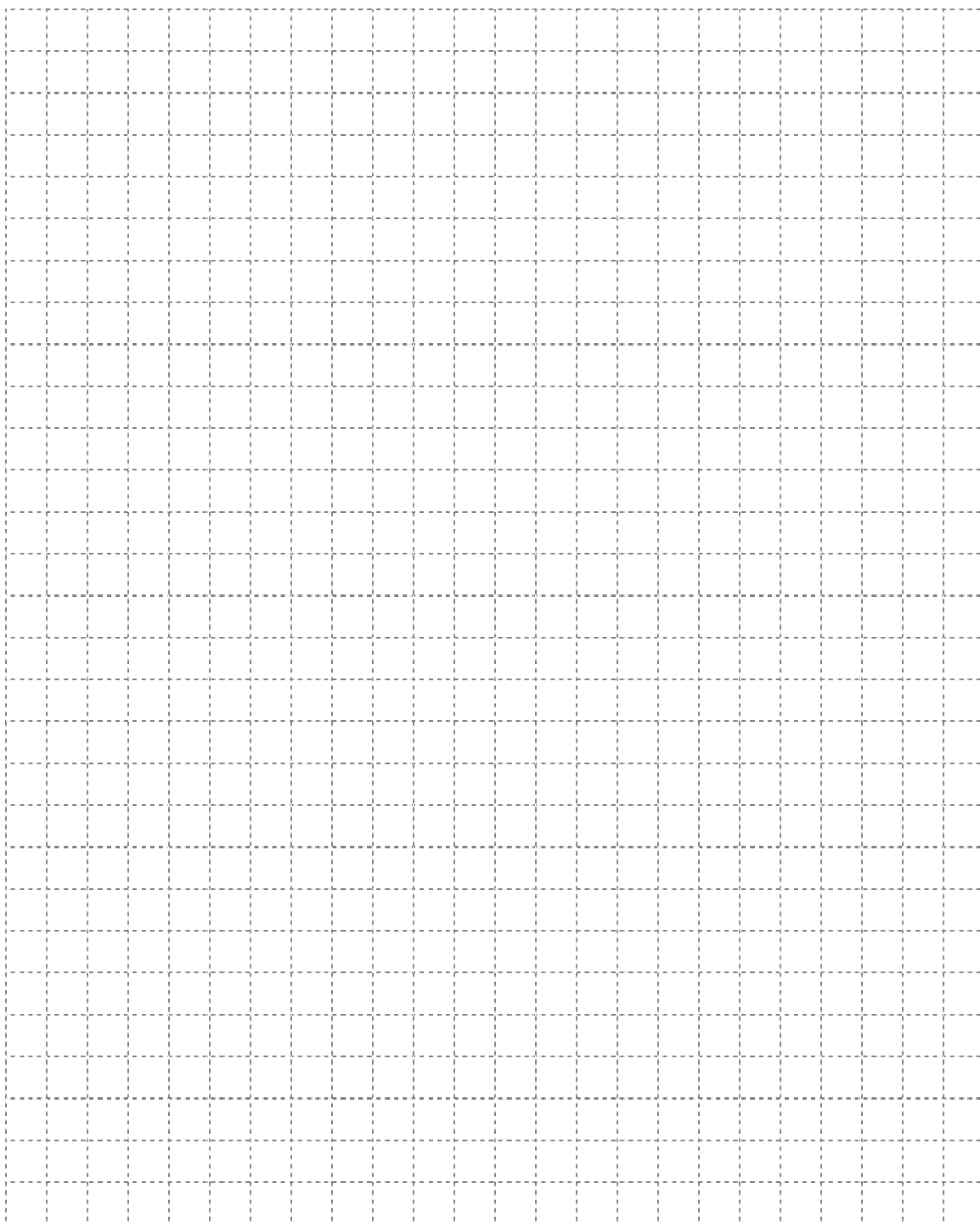
Left-Hand Side	Right-Hand Side

Given the graph of $f(x)$, sketch the graph of the function $g(x) = -|f(x)|$.

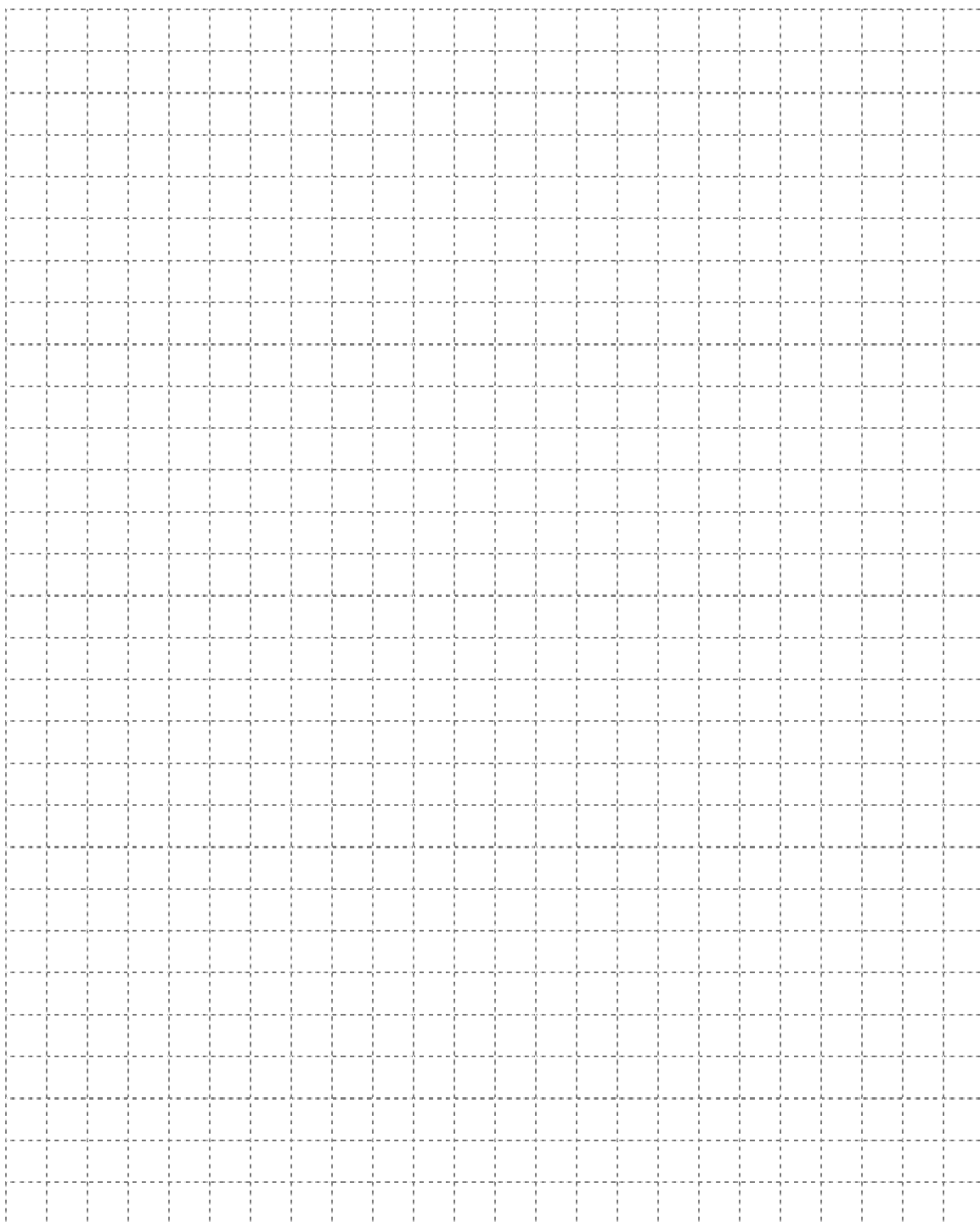


Given that $\cot \theta = -\frac{2}{5}$, where θ is in Quadrant IV, determine the exact value of $\sin \theta$.

No marks will be awarded for work done on this page.



No marks will be awarded for work done on this page.



No marks will be awarded for work done on this page.

No marks will be awarded for work done on this page.

