

Grade 12
Pre-Calculus Mathematics
Achievement Test

Booklet 2

January 2019

Manitoba Education and Training Cataloguing in Publication Data

Grade 12 pre-calculus mathematics achievement test.
Booklet 2. January 2019

This resource is available in print and electronic formats.

ISBN: 978-0-7711-7786-6 (print)

ISBN: 978-0-7711-7787-3 (pdf)

1. Mathematics—Examinations, questions, etc.
 2. Educational tests and measurements—Manitoba.
 3. Mathematics—Study and teaching (Secondary)—Manitoba.
 4. Pre-calculus—Study and teaching (Secondary)—Manitoba.
 5. Mathematical ability—Testing.
- I. Manitoba. Manitoba Education and Training.
510.76

Copyright © 2019, the Government of Manitoba, represented by the Minister of Education and Training.

Manitoba Education and Training
Winnipeg, Manitoba, Canada

All exemplars found in this resource are copyright protected and should not be extracted, accessed, or reproduced for any purpose other than for their intended educational use in this resource. Sincere thanks to the students who allowed their original material to be used.

Permission is hereby given to reproduce this resource for non-profit educational purposes provided the source is cited.

After the administration of this test, print copies of this resource will be available for purchase from the Manitoba Learning Resource Centre. Order online at www.manitobalrc.ca.

This resource will also be available on the Manitoba Education and Training website at www.edu.gov.mb.ca/k12/assess/archives/index.html.

Websites are subject to change without notice.

Disponible en français.

While the department is committed to making its publications as accessible as possible, some parts of this document are not fully accessible at this time.

Available in alternate formats upon request.


Grade 12 Pre-Calculus Mathematics Achievement Test

DESCRIPTION

Time: 3 hours

Numbers and Marks by Question Type

	Selected Response	Constructed Response	Marks
Booklet 1*	—	17	33
Booklet 2	10	22	57
Total	10	39	90

* The first 5 questions in *Booklet 1* require a calculator.  You will have access to your calculator for the first 45 minutes of the test.

Note that diagrams and graphs provided in the test booklets may not be drawn to scale.

DIRECTIONS

Selected Response Questions

- Calculators are **not** allowed for this part of the test.
- You may use the spaces beside each question for rough work.
- Provide only one answer per question.
- There is no penalty for guessing.
- Record your answers on the sheet provided.

Constructed Response Questions

- Calculators are **not** allowed for this part of the test.
- For full marks, your answer must show all pertinent diagrams, calculations, and explanations.
- Your solutions should be neat, clear, and well organized.
- Write each solution in the space provided.

Electronic communication between students through phones, email, or file sharing during the test is strictly prohibited. Please turn off your cell phone and all other such devices.

No marks will be awarded for work done on this page.

Question 18**1 mark**

Identify the remainder when $P(x) = 3x^3 - x^2 + 1$ is divided by $(x - 2)$.

- a) -27
- b) -19
- c) 11
- d) 21

Question 19**1 mark**

Identify the logarithmic form of $2^x = \frac{1}{4}$.

- a) $\log_2 x = \frac{1}{4}$
- b) $\log_x 2 = \frac{1}{4}$
- c) $\log_2 \left(\frac{1}{4} \right) = x$
- d) $\log_x \left(\frac{1}{4} \right) = 2$

Question 20**1 mark**

Leah's Pizzeria offers 9 different pizza toppings. Identify the expression that represents the number of different types of pizzas, with 3 different toppings, that can be made.

- a) ${}_9C_3$
- b) ${}_9P_3$
- c) $\frac{9!}{3!}$
- d) $9!3!$

Question 21**1 mark**

Given $(5, -4)$ is a point on the graph of $y = f(x)$, identify the corresponding point on the graph of $y = \frac{1}{f(x)}$.

a) $\left(\frac{1}{5}, -4\right)$

b) $\left(5, -\frac{1}{4}\right)$

c) $\left(\frac{1}{5}, -\frac{1}{4}\right)$

d) $(-4, 5)$

Question 22**1 mark**

Identify the non-permissible value of x for $1 + \sec x$ over $[0, \pi]$.

a) 0

b) $\frac{\pi}{4}$

c) $\frac{\pi}{2}$

d) π

Question 23**1 mark**

Indicate the combination that represents the circled term in the given row of Pascal's triangle.

$$1 \quad 4 \quad 6 \quad \textcircled{4} \quad 1$$

a) ${}_4C_3$

b) ${}_4C_4$

c) ${}_5C_3$

d) ${}_5C_4$

Question 24**1 mark**

Identify the x -intercept on the graph of $f(x) = \sqrt{2(x+5)}$.

- a) -5
- b) 0
- c) $\sqrt{10}$
- d) 5

Question 25**1 mark**

Identify the coterminal angle of $\frac{\pi}{5}$ over the interval $-\pi \leq \theta \leq 4\pi$.

- a) $-\frac{9\pi}{5}$
- b) $-\frac{\pi}{5}$
- c) $\frac{3\pi}{5}$
- d) $\frac{11\pi}{5}$

Question 26**1 mark**

Given $f(x) = \{(2,6), (3,2), (3,4), (6,5)\}$, identify the value of $f(f(2))$.

- a) 3
- b) 4
- c) 5
- d) 6

Question 27**1 mark**

The graph of $f(x) = (x - 1)^2$ is translated 2 units to the left and 3 units up. Identify the equation of the transformed graph, $g(x)$.

a) $g(x) = (x + 1)^2 + 3$

b) $g(x) = (x - 3)^2 + 3$

c) $g(x) = (x + 2)^2 + 3$

d) $g(x) = (x - 2)^2 + 3$

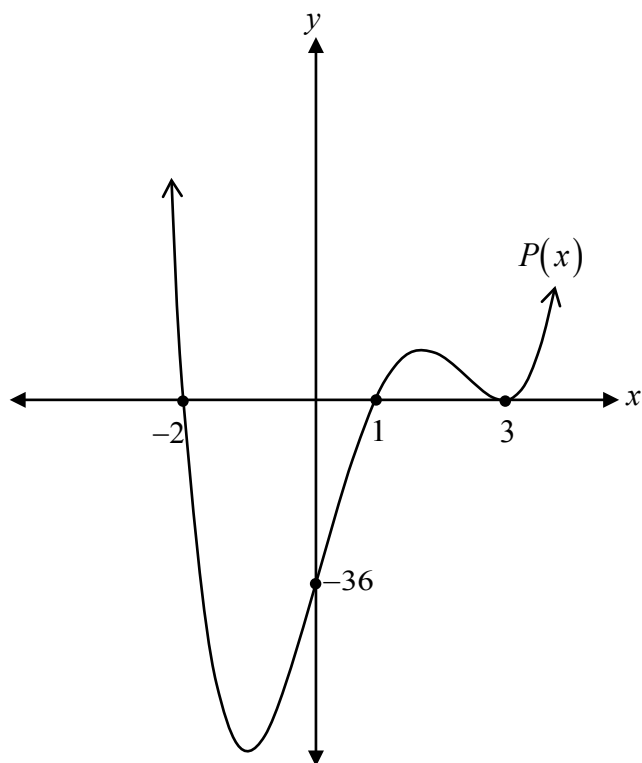
Question 28

2 marks 119

Given $\csc \theta = -\frac{8}{5}$, determine the exact value of $\cos 2\theta$.

Determine the period of the sinusoidal function, $f(x) = -6 \cos\left(\frac{\pi}{6}(x+1)\right) + 5$.

Determine, algebraically, the equation of $P(x)$, given the graph of the polynomial function $P(x)$.



$P(x) =$ _____

Question 31

4 marks 122

Solve $2\sin^2\theta - 7\sin\theta - 4 = 0$ where $\theta \in \mathbb{R}$.

Question 32

1 mark 123

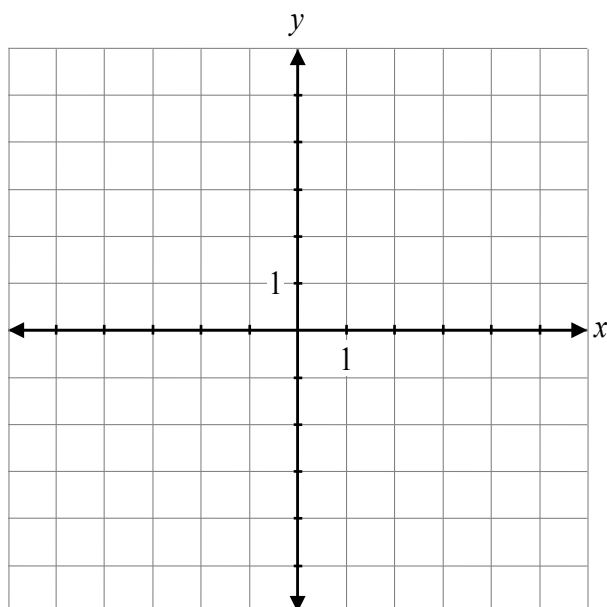
Justify that the shapes of the graphs of $f(x) = (x + 1)^2(x - 1)$ and $g(x) = (x + 1)^2(x - 1)^3$ are different as they approach the x -intercept at $x = 1$.

Question 33

2 marks 124

Determine the exact value of $\cot \theta$ if $\cos \theta = -\frac{4}{7}$ and $\sin \theta$ is positive.

Sketch the graph of $f(x) = -\log_2(x) + 2$.



State the range of $f(x) = \sqrt{x+4}$.

Range: _____

Sophie correctly solved the logarithmic equation, $\log_7(x-1) = \log_7(2x-2)$.

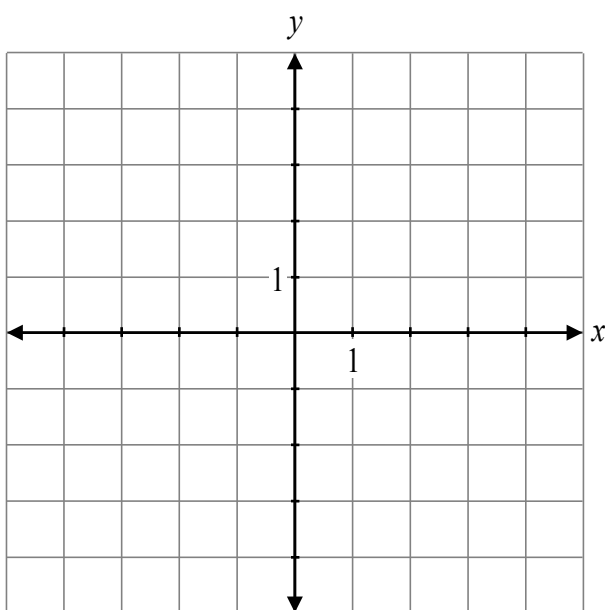
$$x-1 = 2x-2$$

$$-1+2 = 2x-x$$

$$~~1 = x~~$$

Explain why $x=1$ is an extraneous root.

Sketch the graph of $f(x) = \sqrt{4x} - 1$.



Question 38

3 marks 129

Solve, algebraically.

$${}_n C_2 = 2n + 7$$

Question 39

1 mark 130

Given $f(x) = x^2 - 1$ and $g(x) = x - 3$, explain why the domain of $h(x) = \frac{f(x)}{g(x)}$ has a restriction when $x = 3$.

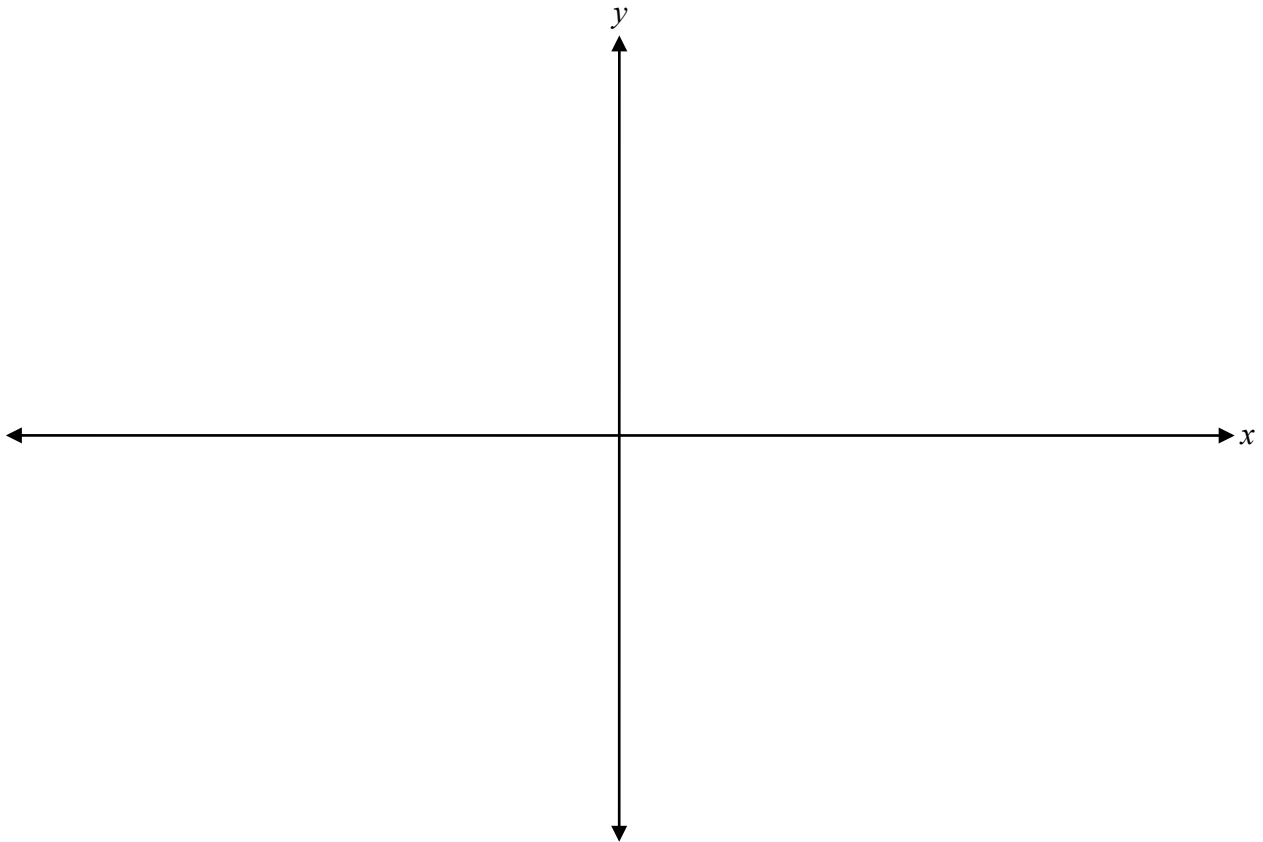
Evaluate.

$$\frac{\cot\left(\frac{11\pi}{6}\right)\sin\left(-\frac{4\pi}{3}\right)}{\cos\left(\frac{2\pi}{3}\right)}$$

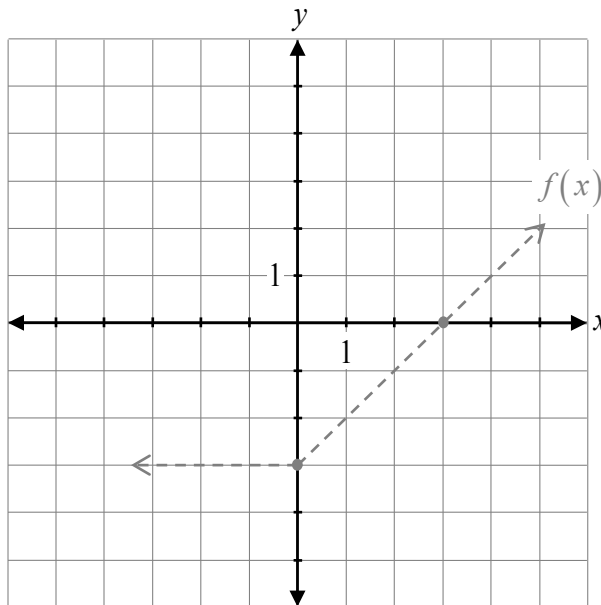
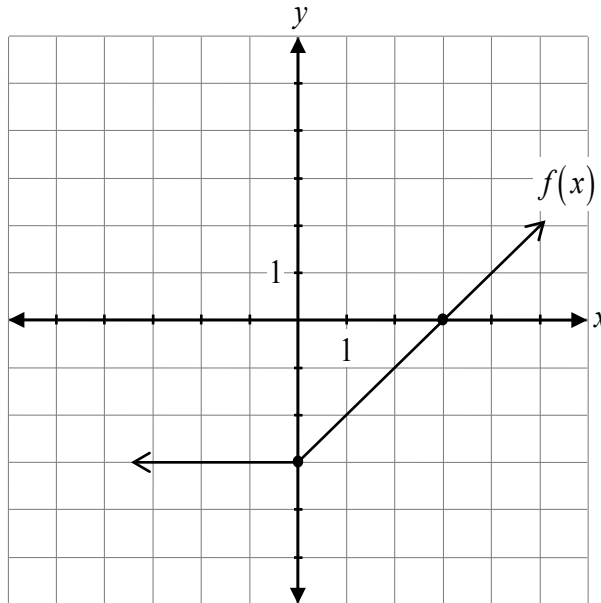
Solve, algebraically.

$$\log_2(\log_3 x) = 2$$

Sketch the graph of the function $y = 5 \sin\left(\frac{\pi}{4}x\right) + 1$ over the domain $[-4, 8]$.

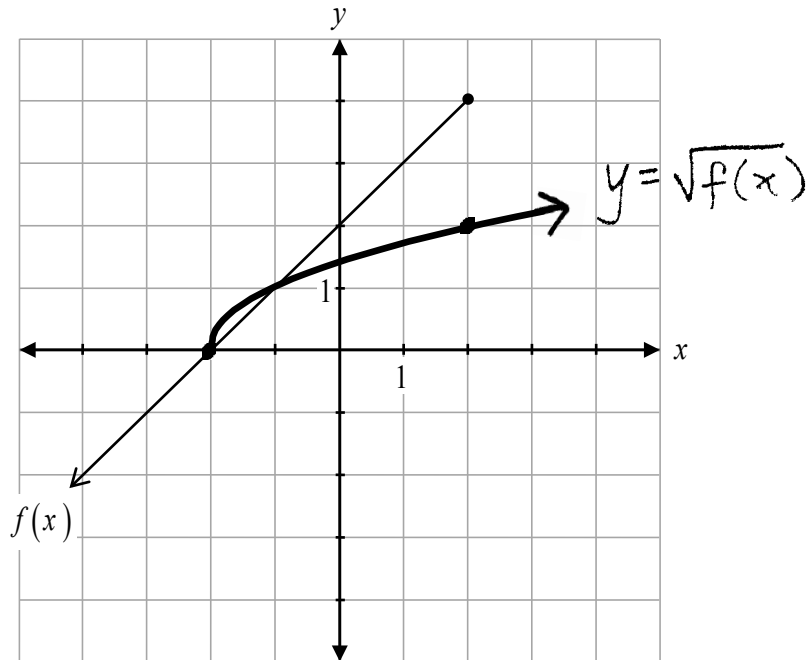


Given the graph of $y = f(x)$, sketch the graph of $y = |f(-x)|$.



The graph of $f(x)$ has already been drawn for your reference. No marks will be awarded for the graph of $f(x)$.

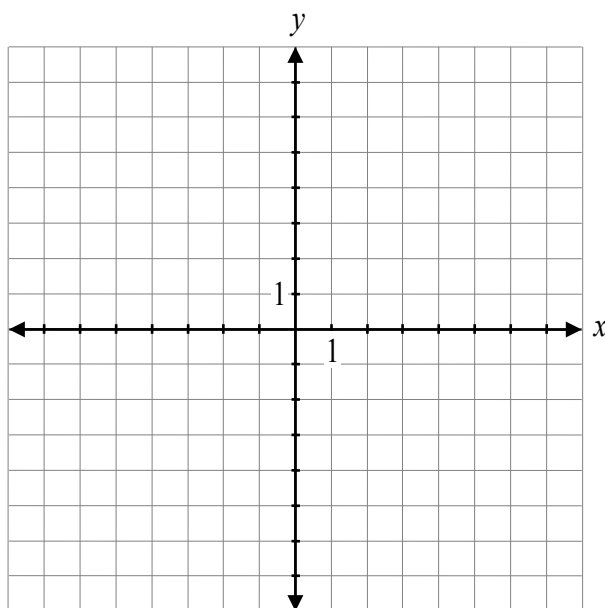
Savannah used the graph of $y = f(x)$ to sketch the graph of $y = \sqrt{f(x)}$. Her solution is given below. Describe her error.



Determine the exact value of $\sin\left(\frac{13\pi}{12}\right)$.

State the equation of the horizontal asymptote of $f(x) = \frac{3x}{x-1}$.

Sketch the graph of $f(x) = \frac{5x - 10}{x^2 + x - 6}$.

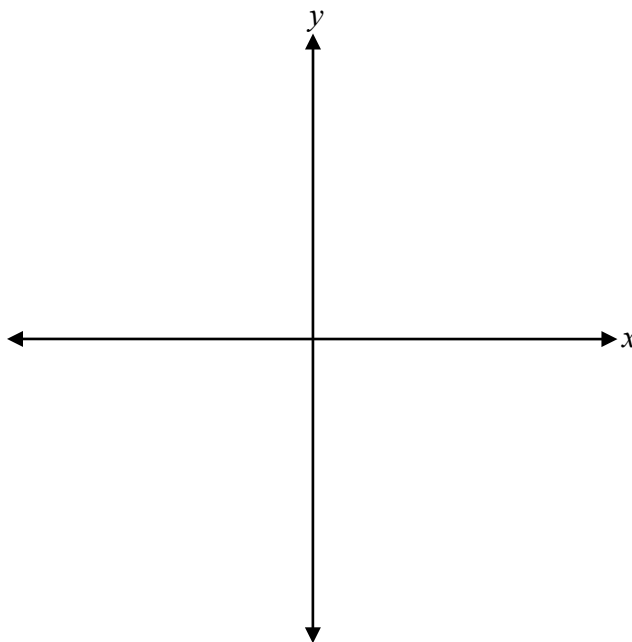


Question 48

2 marks 139

Determine, algebraically, the inverse of $f(x) = 3x + 4$.

Sketch the graph of $P(x) = -(x+1)(x-2)(x+3)$.



No marks will be awarded for work done on this page.

