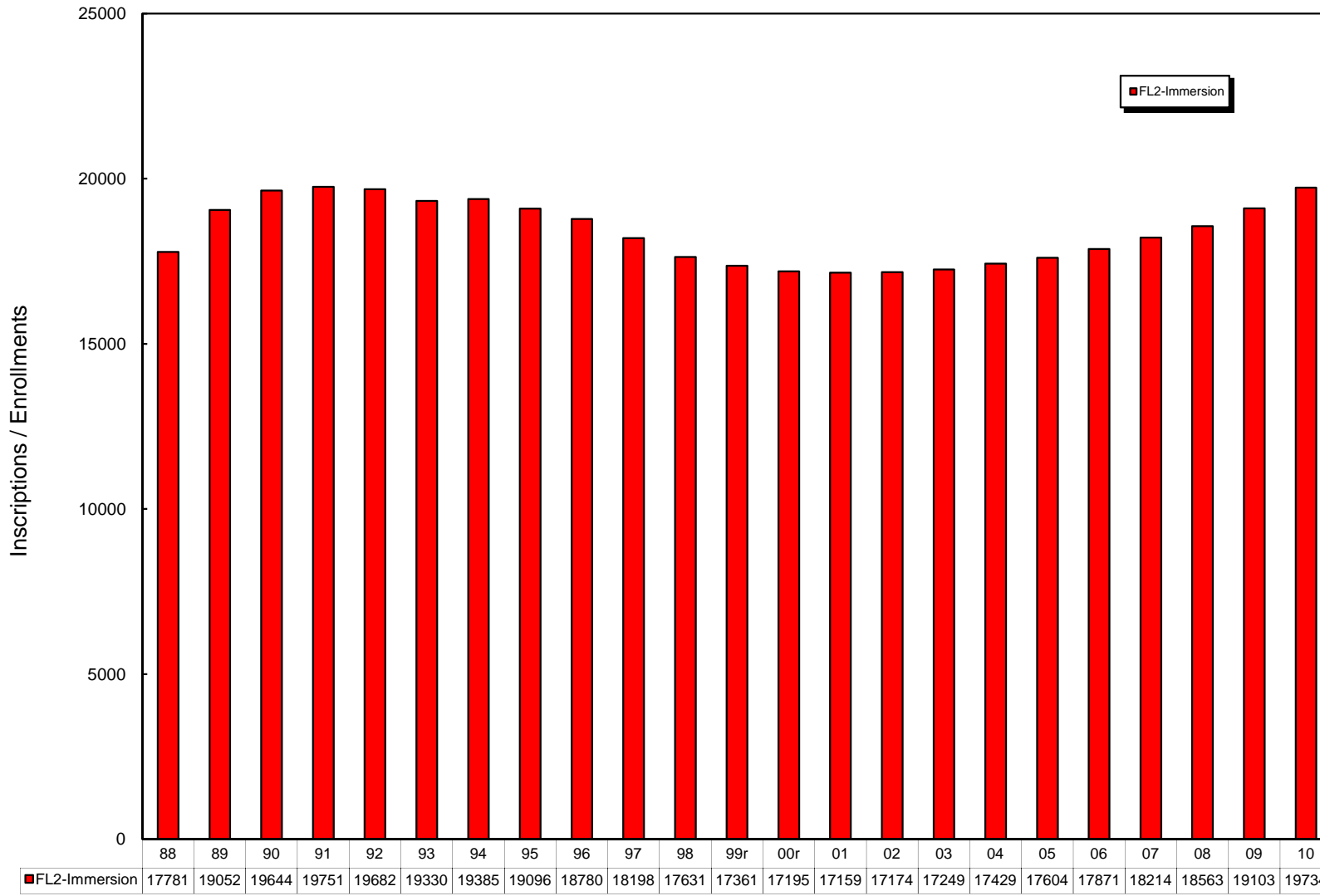
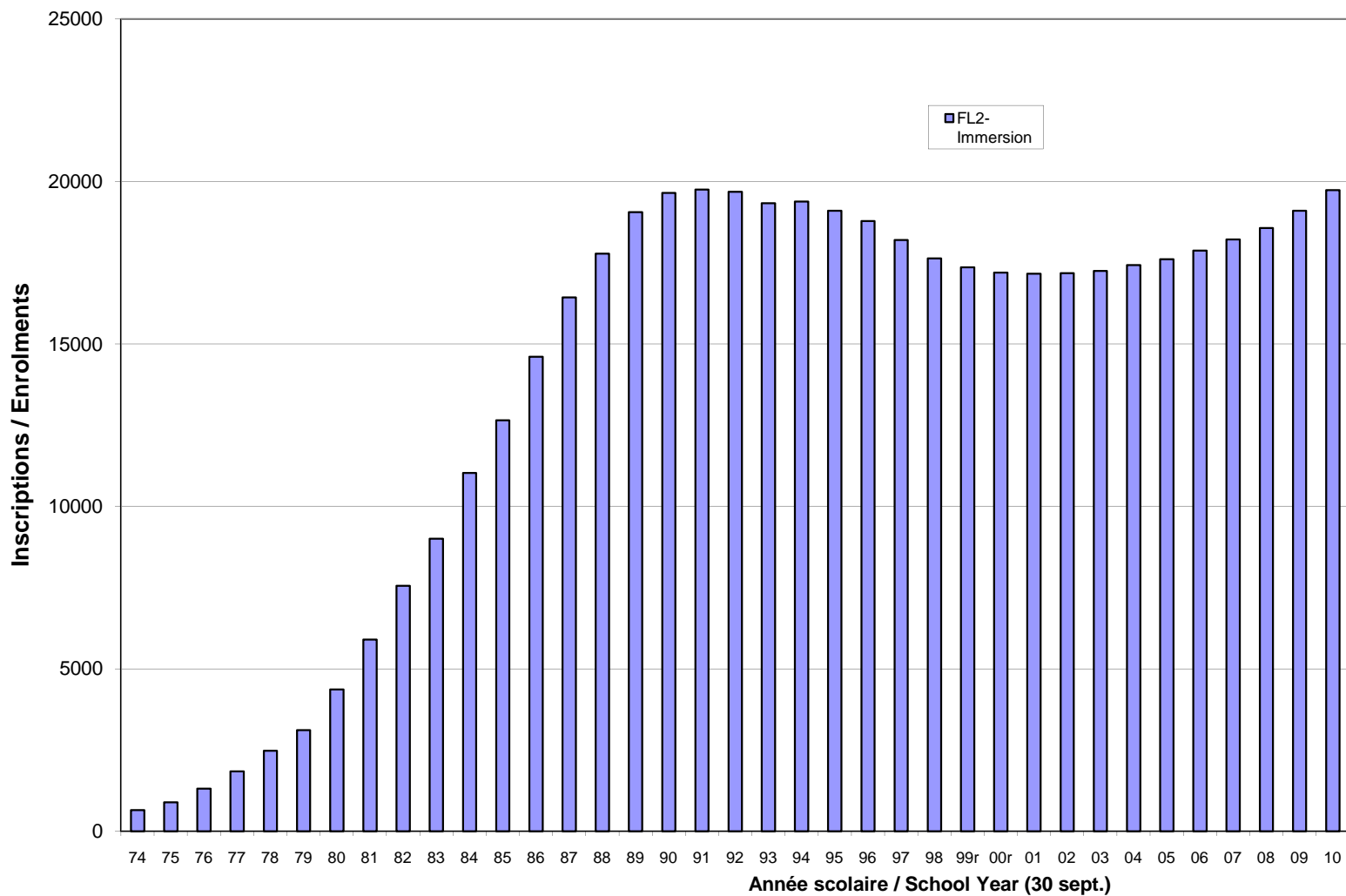


**MANITOBA - INSCRIPTIONS PROGRAMME FL2 - IMMERSION PROGRAM ENROLMENTS**  
**Années scolaires 1988/89 - 2010/11 School Years, Écoles publiques seulement / Public Schools Only**

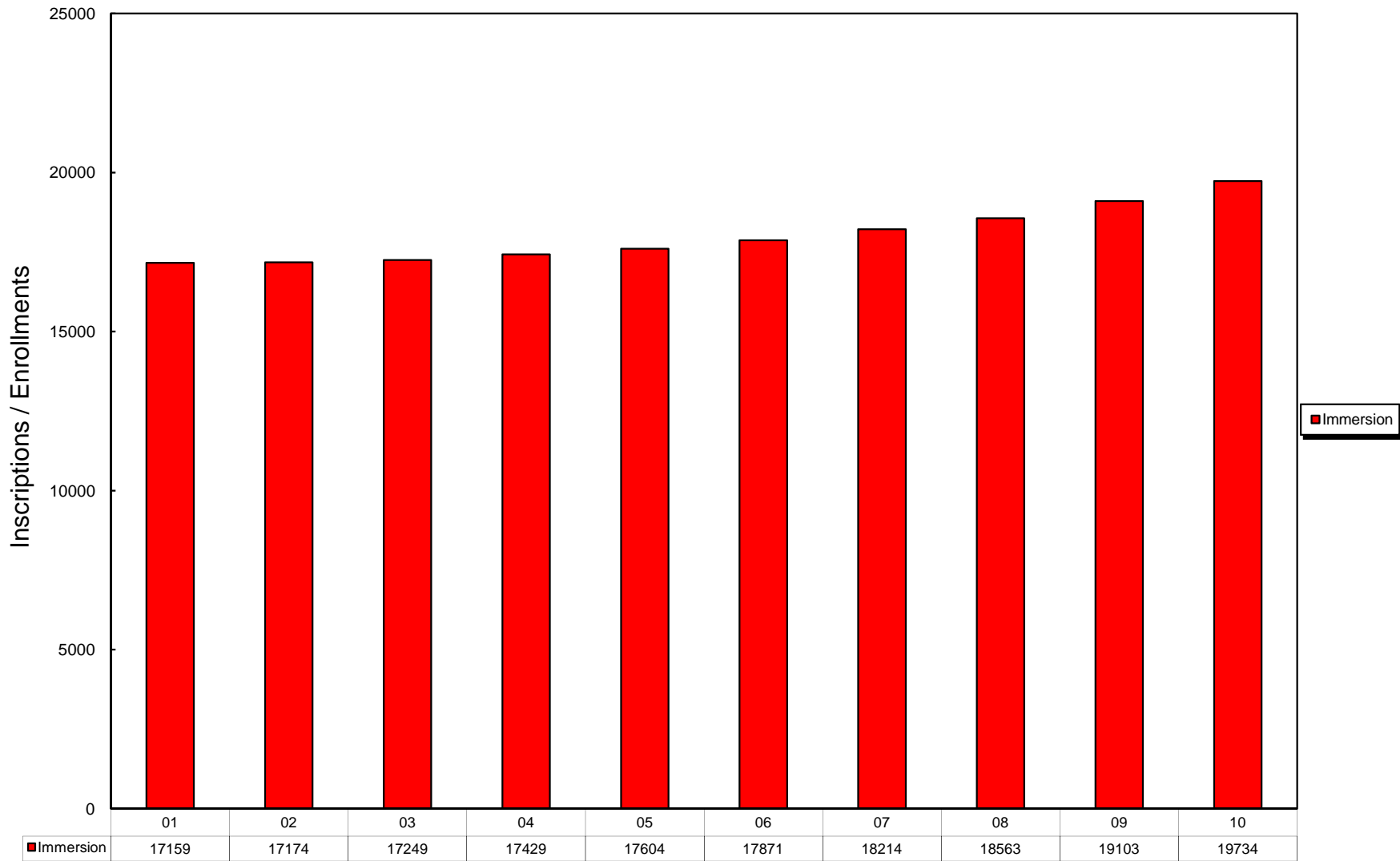


Année scolaire / School Year ( 30 sept. )

**MANITOBA - INSCRIPTIONS PROGRAMME FL2-IMMERSION PROGRAM ENROLMENTS**  
**Années scolaires 1974-75 à 2010-11 School Years (Écoles publiques seulement / Public Schools Only)**  
(B.E.F. - Éducation Manitoba / Manitoba Education)



**MANITOBA - INSCRIPTIONS PROGRAMME FL2 - IMMERSION PROGRAM ENROLMENTS**  
**Années scolaires 2001/02 - 2010/11 School Years, Écoles publiques seulement / Public schools only**



Année scolaire ( 30 sept. )