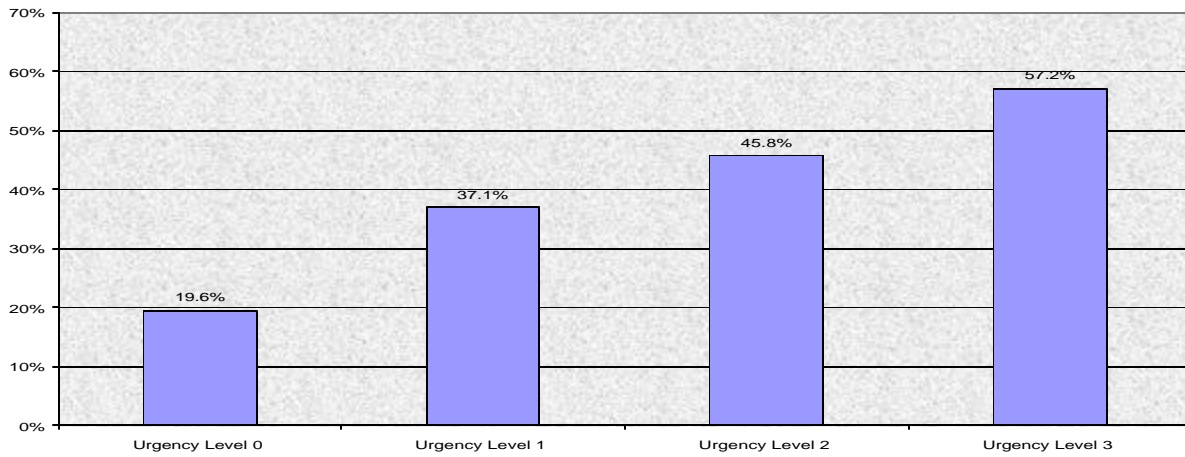
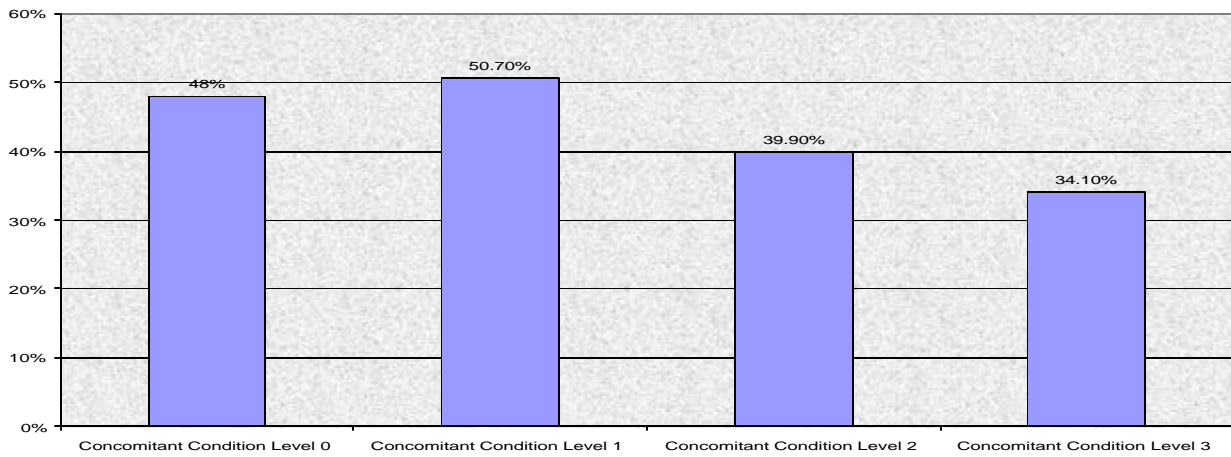


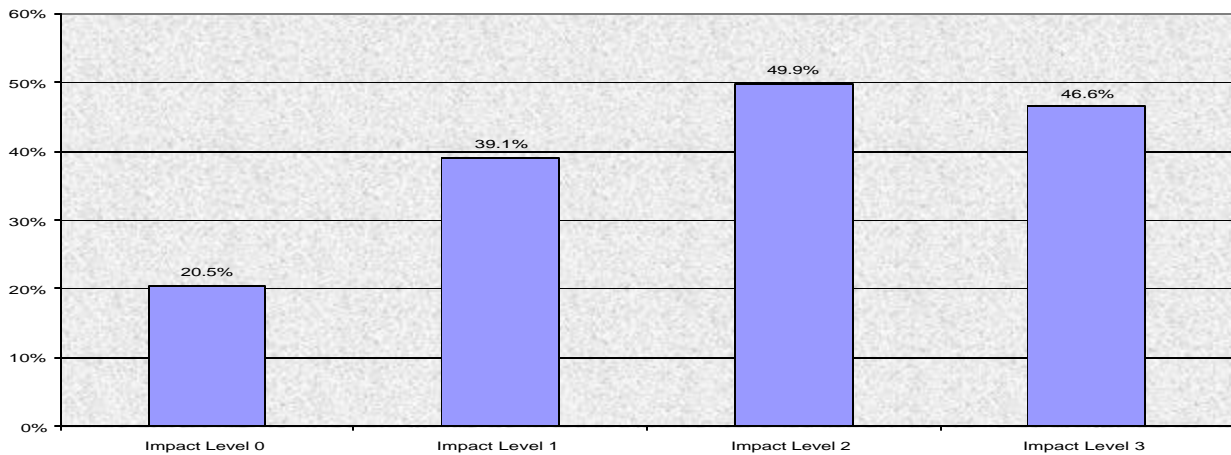
**Outcomes based on "Urgency" Percent Improved
Kindergarten to Senior 4**



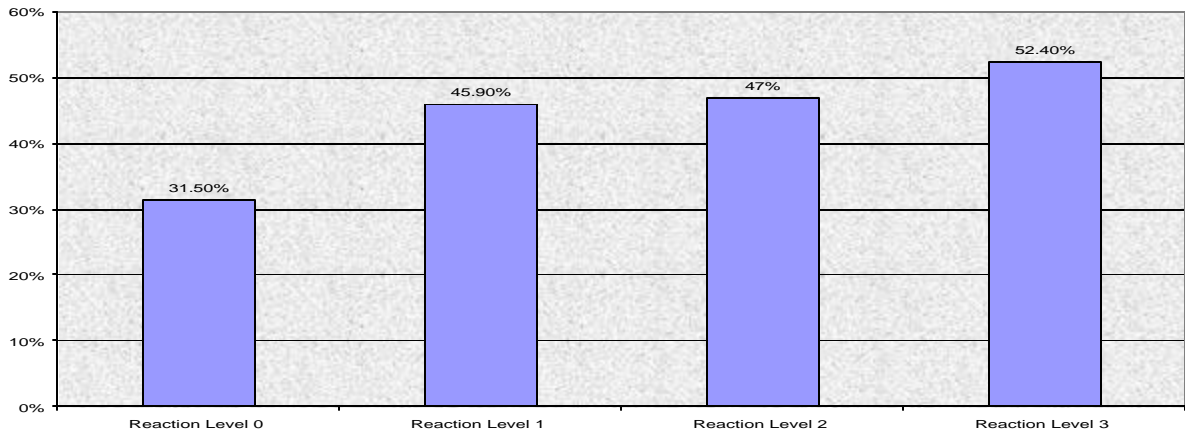
**Outcomes based on "Concomitant Condition" Kindergarten - Senior 4
Percent Improved**



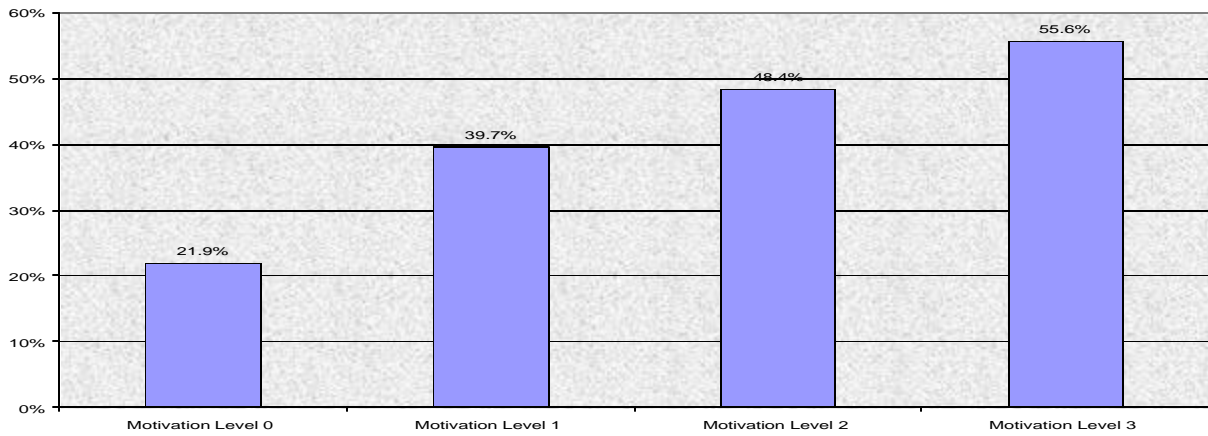
**Outcomes based on "Impact" Percent Improved
Kindergarten to Senior 4**



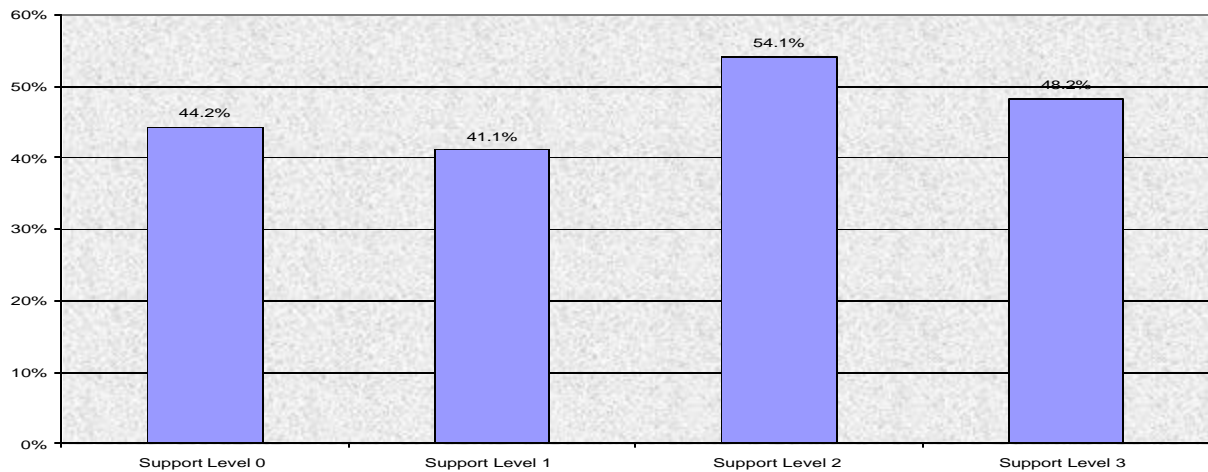
**Outcomes based on "Reaction" Kindergarten - Senior 4
Percent Improved**



**Outcomes based on "Motivation" Kindergarten - Senior 4
Percent Improved**



**Outcomes based on "Support" Kindergarten - Senior 4
Percent Improved**



**Outcomes based on "Prognosis" Kindergarten - Senior 4
Percent Improved**

