

**Number of Students in the French Immersion Program by School Year and Grade
Manitoba - Provincial Summary
School Years 1979-1980 to 2015-2016**

School Years	K	1	2	3	4	5	6	7	8	9	10	11	12	Total
1979-1980	640	565	367	283	311	245	153	194	148	106	67	35	0	3,114
1980-1981	1,030	816	569	362	377	307	228	289	145	109	63	56	13	4,364
1981-1982	1,288	1,247	758	536	502	357	287	378	285	102	83	53	23	5,899
1982-1983	1,483	1,399	1,166	729	712	477	366	517	331	200	82	48	41	7,551
1983-1984	1,608	1,583	1,306	1,098	794	665	439	564	474	267	126	54	26	9,004
1984-1985	1,972	1,759	1,503	1,262	1,202	763	633	695	546	407	159	88	42	11,031
1985-1986	2,054	2,030	1,605	1,384	1,308	1,138	732	872	613	459	238	146	71	12,650
1986-1987	2,287	2,152	1,926	1,525	1,408	1,261	1,084	1,020	789	558	281	190	127	14,608
1987-1988	2,400	2,347	1,997	1,804	1,563	1,343	1,216	1,313	935	706	389	242	173	16,428
1988-1989	2,407	2,429	2,167	1,869	1,730	1,491	1,294	1,354	1,152	842	493	334	219	17,781
1989-1990	2,481	2,423	2,232	2,008	1,814	1,652	1,429	1,433	1,251	1,059	553	427	290	19,052
1990-1991	2,338	2,401	2,216	2,060	1,886	1,697	1,568	1,500	1,304	1,113	703	465	393	19,644
1991-1992	2,084	2,276	2,162	2,060	1,917	1,759	1,625	1,534	1,362	1,144	778	624	426	19,751
1992-1993	1,970	2,014	2,091	2,015	1,940	1,785	1,674	1,463	1,406	1,214	860	700	550	19,682
1993-1994	1,971	1,952	1,857	1,907	1,911	1,814	1,670	1,487	1,343	1,192	882	713	631	19,330
1994-1995	2,032	1,938	1,801	1,752	1,824	1,796	1,743	1,509	1,444	1,142	939	787	678	19,385
1995-1996	1,968	1,966	1,803	1,651	1,668	1,718	1,674	1,568	1,392	1,264	903	788	733	19,096
1996-1997	1,958	1,974	1,784	1,654	1,543	1,547	1,599	1,526	1,437	1,214	1,053	769	722	18,780
1997-1998	1,808	1,918	1,776	1,623	1,533	1,422	1,441	1,388	1,424	1,230	1,035	888	712	18,198
1998-1999	1,758	1,754	1,730	1,610	1,474	1,420	1,305	1,317	1,271	1,237	1,023	885	847	17,631
1999-2000	1,810	1,733	1,620	1,597	1,487	1,398	1,335	1,272	1,247	1,075	1,046	928	813	17,361
2000-2001	1,882	1,820	1,608	1,482	1,483	1,408	1,293	1,237	1,199	1,034	947	951	851	17,195
2001-2002	1,851	1,890	1,696	1,468	1,378	1,384	1,308	1,231	1,156	1,059	962	865	911	17,159
2002-2003	1,829	1,837	1,732	1,569	1,382	1,317	1,309	1,261	1,171	1,056	991	868	852	17,174
2003-2004	1,820	1,816	1,730	1,615	1,489	1,327	1,240	1,271	1,196	1,078	924	880	863	17,249
2004-2005	1,912	1,840	1,681	1,621	1,533	1,417	1,253	1,217	1,209	1,049	979	880	838	17,429
2005-2006	1,903	1,939	1,686	1,552	1,518	1,455	1,320	1,228	1,143	1,124	956	921	859	17,604
2006-2007	1,956	1,924	1,803	1,594	1,466	1,414	1,376	1,301	1,153	1,070	1,037	914	863	17,871
2007-2008	1,963	2,008	1,835	1,715	1,514	1,413	1,337	1,356	1,237	1,057	1,012	931	836	18,214
2008-2009	1,969	2,011	1,890	1,742	1,635	1,436	1,339	1,301	1,271	1,149	952	935	932	18,562 (+1 Sp.ed.)
2009-2010	2,094	2,054	1,935	1,793	1,683	1,548	1,366	1,309	1,263	1,178	1,068	865	947	19,103
2010-2011	2,192	2,186	1,972	1,854	1,745	1,612	1,476	1,320	1,269	1,133	1,103	999	873	19,734
2011-2012	2,297	2,249	2,129	1,887	1,773	1,637	1,524	1,449	1,293	1,174	1,049	1,043	986	20,490
2012-2013	2,466	2,419	2,142	2,020	1,803	1,696	1,579	1,476	1,396	1,174	1,074	980	989	21,214
2013-2014	2,552	2,588	2,332	2,035	1,957	1,719	1,636	1,510	1,423	1,276	1,132	1,009	937	22,106
2014-2015	2,632	2,648	2,470	2,184	1,953	1,849	1,621	1,511	1,445	1,227	1,221	989	975	22,725
2015-2016	2,535	2,719	2,564	2,360	2,115	1,866	1,770	1,572	1,502	1,319	1,188	1,109	928	23,547

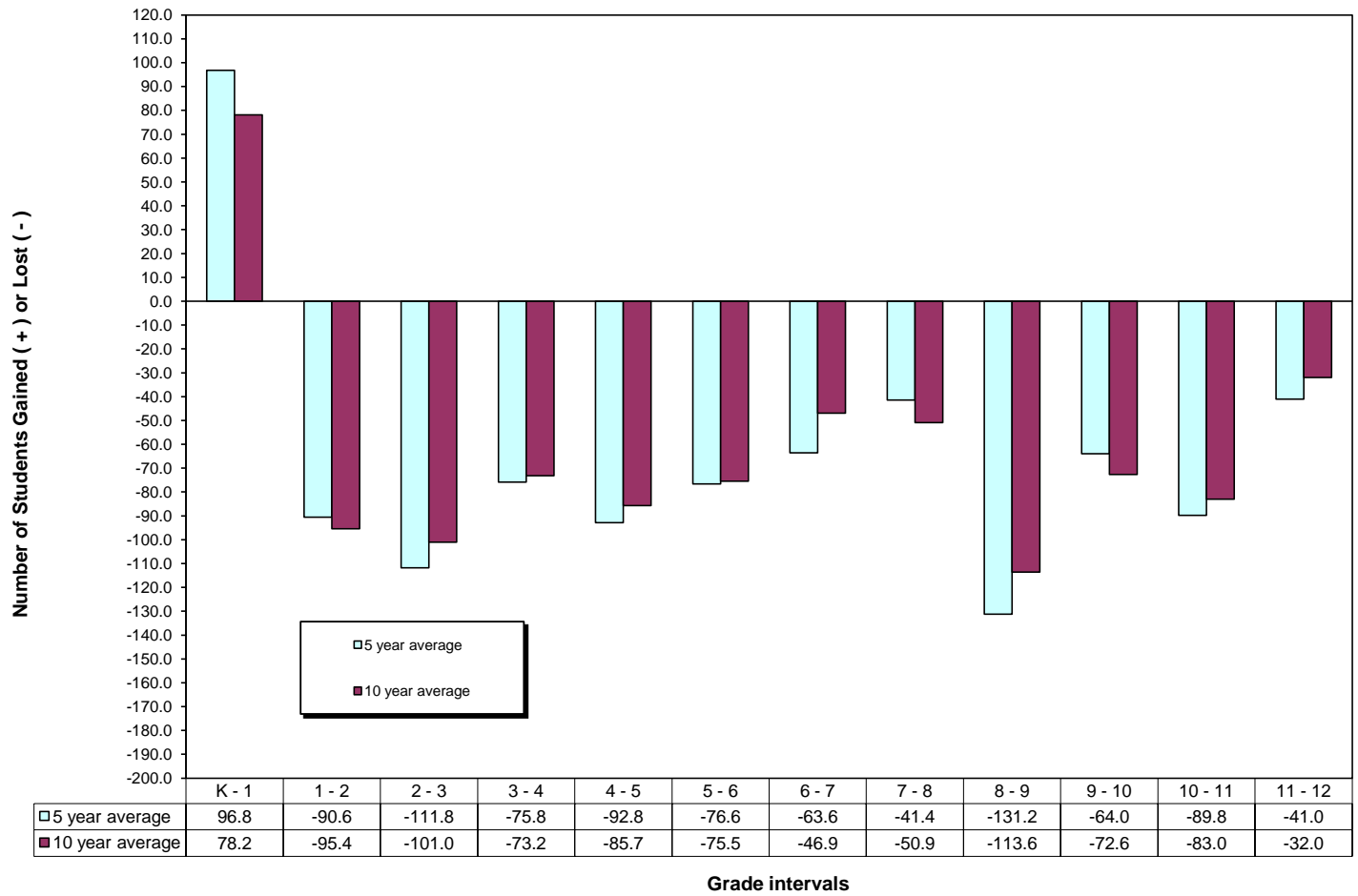
Gain (+) or Loss (-) of Students in the French Immersion Program by School Year and Grade Intervals
Manitoba - Provincial Summary
School years 1979-1980 to 2015-2016

School Years	K - 1	1 - 2	2 - 3	3 - 4	4 - 5	5 - 6	6 - 7	7 - 8	8 - 9	9 - 10	10 - 11	11 - 12
79-80 / 80-81	176	4	-5	94	-4	-17	136	-49	-39	-43	-11	-22
80-81 / 81-82	217	-58	-33	140	-20	-20	150	-4	-43	-26	-10	-33
81-82 / 82-83	111	-81	-29	176	-25	9	230	-47	-85	-20	-35	-12
82-83 / 83-84	100	-93	-68	65	-47	-38	198	-43	-64	-74	-28	-22
83-84 / 84-85	151	-80	-44	104	-31	-32	256	-18	-67	-108	-38	-12
84-85 / 85-86	58	-154	-119	46	-64	-31	239	-82	-87	-169	-13	-17
85-86 / 86-87	98	-104	-80	24	-47	-54	288	-83	-55	-178	-48	-19
86-87 / 87-88	60	-155	-122	38	-65	-45	229	-85	-83	-169	-39	-17
87-88 / 88-89	29	-180	-128	-74	-72	-49	138	-161	-93	-213	-55	-23
88-89 / 89-90	16	-197	-159	-55	-78	-62	139	-103	-93	-289	-66	-44
89-90 / 90-91	-80	-207	-172	-122	-117	-84	71	-129	-138	-356	-88	-34
90-91 / 91-92	-62	-239	-156	-143	-127	-72	-34	-138	-160	-335	-79	-39
91-92 / 92-93	-70	-185	-147	-120	-132	-85	-162	-128	-148	-284	-78	-74
92-93 / 93-94	-18	-157	-184	-104	-126	-115	-187	-120	-214	-332	-147	-69
93-94 / 94-95	-33	-151	-105	-83	-115	-71	-161	-43	-201	-253	-95	-35
94-95 / 95-96	-66	-135	-150	-84	-106	-122	-175	-117	-180	-239	-151	-54
95-96 / 96-97	6	-182	-149	-108	-121	-119	-148	-131	-178	-211	-134	-66
96-97 / 97-98	-40	-198	-161	-121	-121	-106	-211	-102	-207	-179	-165	-57
97-98 / 98-99	-54	-188	-166	-149	-113	-117	-124	-117	-187	-207	-150	-41
98-99 / 99-00	-25	-134	-133	-123	-76	-85	-33	-70	-196	-191	-95	-72
99-00 / 00-01	10	-125	-138	-114	-79	-105	-98	-73	-213	-128	-95	-77
00-01 / 01-02	8	-124	-140	-104	-99	-100	-62	-81	-140	-72	-82	-40
01-02 / 02-03	-14	-158	-127	-86	-61	-75	-47	-60	-100	-68	-94	-13
02-03 / 03-04	-13	-107	-117	-80	-55	-77	-38	-65	-93	-132	-111	-5
03-04 / 04-05	20	-135	-109	-82	-72	-74	-23	-62	-147	-99	-44	-42
04-05 / 05-06	27	-154	-129	-103	-78	-97	-25	-74	-85	-93	-58	-21
05-06 / 06-07	21	-136	-92	-86	-104	-79	-19	-75	-73	-87	-42	-58
06-07 / 07-08	52	-89	-88	-80	-53	-77	-20	-64	-96	-58	-106	-78
07/08 / 08/09	48	-118	-93	-80	-78	-74	-36	-85	-88	-105	-77	1
08/09 / 09/10	85	-76	-97	-59	-87	-70	-30	-38	-93	-81	-87	12
09/10 / 10/11	92	-82	-81	-48	-71	-72	-46	-40	-130	-75	-69	8
10/11 / 11/12	57	-57	-85	-81	-108	-88	-27	-27	-95	-84	-60	-13
11/12 / 12/13	122	-107	-109	-84	-77	-58	-48	-53	-119	-100	-69	-54
12/13 / 13/14	122	-87	-107	-63	-84	-60	-69	-53	-120	-42	-65	-43
13/14 / 14/15	96	-118	-148	-82	-108	-98	-125	-65	-196	-55	-143	-34
14/15 / 15/16	87	-84	-110	-69	-87	-79	-49	-9	-126	-39	-112	-61
Average (last 5 observ.)	96.8	-90.6	-111.8	-75.8	-92.8	-76.6	-63.6	-41.4	-131.2	-64.0	-89.8	-41.0
Average (last 10 observ.)	78.2	-95.4	-101.0	-73.2	-85.7	-75.5	-46.9	-50.9	-113.6	-72.6	-83.0	-32.0

Percentage Gain (+) or Loss (-) of Students in the French Immersion Program by School Year and Grade Intervals
Manitoba - Provincial Summary
School years 1979-1980 to 2015-2016

School Years	K - 1	1 - 2	2 - 3	3 - 4	4 - 5	5 - 6	6 - 7	7 - 8	8 - 9	9 - 10	10 - 11	11 - 12
79-80 / 80-81	27.50	0.71	-1.36	33.22	-1.29	-6.94	88.89	-25.26	-26.35	-40.57	-16.42	-62.86
80-81 / 81-82	21.07	-7.11	-5.80	38.67	-5.31	-6.51	65.79	-1.38	-29.66	-23.85	-15.87	-58.93
81-82 / 82-83	8.62	-6.50	-3.83	32.84	-4.98	2.52	80.14	-12.43	-29.82	-19.61	-42.17	-22.64
82-83 / 83-84	6.74	-6.65	-5.83	8.92	-6.60	-7.97	54.10	-8.32	-19.34	-37.00	-34.15	-45.83
83-84 / 84-85	9.39	-5.05	-3.37	9.47	-3.90	-4.81	58.31	-3.19	-14.14	-40.45	-30.16	-22.22
84-85 / 85-86	2.94	-8.75	-7.92	3.65	-5.32	-4.06	37.76	-11.80	-15.93	-41.52	-8.18	-19.32
85-86 / 86-87	4.77	-5.12	-4.98	1.73	-3.59	-4.75	39.34	-9.52	-8.97	-38.78	-20.17	-13.01
86-87 / 87-88	2.62	-7.20	-6.33	2.49	-4.62	-3.57	21.13	-8.33	-10.52	-30.29	-13.88	-8.95
87-88 / 88-89	1.21	-7.67	-6.41	-4.10	-4.61	-3.65	11.35	-12.26	-9.95	-30.17	-14.14	-9.50
88-89 / 89-90	0.66	-8.11	-7.34	-2.94	-4.51	-4.16	10.74	-7.61	-8.07	-34.32	-13.39	-13.17
89-90 / 90-91	-3.22	-8.54	-7.71	-6.08	-6.45	-5.08	4.97	-9.00	-11.03	-33.62	-15.91	-7.96
90-91 / 91-92	-2.65	-9.95	-7.04	-6.94	-6.73	-4.24	-2.17	-9.20	-12.27	-30.10	-11.24	-8.39
91-92 / 92-93	-3.36	-8.13	-6.80	-5.83	-6.89	-4.83	-9.97	-8.34	-10.87	-24.83	-10.03	-11.86
92-93 / 93-94	-0.91	-7.80	-8.80	-5.16	-6.49	-6.44	-11.17	-8.20	-15.22	-27.35	-17.09	-9.86
93-94 / 94-95	-1.67	-7.74	-5.65	-4.35	-6.02	-3.91	-9.64	-2.89	-14.97	-21.22	-10.77	-4.91
94-95 / 95-96	-3.25	-6.97	-8.33	-4.79	-5.81	-6.79	-10.04	-7.75	-12.47	-20.93	-16.08	-6.86
95-96 / 96-97	0.30	-9.26	-8.26	-6.54	-7.25	-6.93	-8.84	-8.35	-12.79	-16.69	-14.84	-8.38
96-97 / 97-98	-2.04	-10.03	-9.02	-7.32	-7.84	-6.85	-13.20	-6.68	-14.41	-14.74	-15.67	-7.41
97-98 / 98-99	-2.99	-9.80	-9.35	-9.18	-7.37	-8.23	-8.61	-8.43	-13.13	-16.83	-14.49	-4.62
98-99 / 99-00	-1.42	-7.64	-7.69	-7.64	-5.16	-5.99	-2.53	-5.32	-15.42	-15.44	-9.29	-8.14
99-00 / 00-01	0.55	-7.21	-8.52	-7.14	-5.31	-7.51	-7.34	-5.74	-17.08	-11.91	-9.08	-8.30
00-01 / 01-02	0.43	-6.81	-8.71	-7.02	-6.68	-7.10	-4.80	-6.55	-11.68	-6.96	-8.66	-4.21
01-02 / 02-03	-0.76	-8.36	-7.49	-5.86	-4.43	-5.42	-3.59	-4.87	-8.65	-6.42	-9.77	-1.50
02-03 / 03-04	-0.71	-5.82	-6.76	-5.10	-3.98	-5.85	-2.90	-5.15	-7.94	-12.50	-11.20	-0.58
03-04 / 04-05	1.10	-7.43	-6.30	-5.08	-4.84	-5.58	-1.85	-4.88	-12.29	-9.18	-4.76	-4.77
04-05 / 05-06	1.41	-8.37	-7.67	-6.35	-5.09	-6.85	-2.00	-6.08	-7.03	-8.87	-5.92	-2.39
05-06 / 06-07	1.10	-7.01	-5.46	-5.54	-6.85	-5.43	-1.44	-6.11	-6.39	-7.74	-4.39	-6.30
06-07 / 07-08	2.66	-4.63	-4.88	-5.02	-3.62	-5.45	-1.45	-4.92	-8.33	-5.42	-10.22	-8.53
07/08 / 08/09	2.45	-5.88	-5.07	-4.66	-5.15	-5.24	-2.69	-6.27	-7.11	-9.93	-7.61	0.11
08/09 / 09/10	4.32	-3.78	-5.13	-3.39	-5.32	-4.87	-2.24	-2.92	-7.32	-7.05	-9.14	1.28
09/10 / 10/11	4.39	-3.99	-4.19	-2.68	-4.22	-4.65	-3.37	-3.06	-10.29	-6.37	-6.46	0.92
10/11 / 11/12	2.60	-2.61	-4.31	-4.37	-6.19	-5.46	-1.83	-2.05	-7.49	-7.41	-5.44	-1.30
11/12 / 12/13	5.31	-4.76	-5.12	-4.45	-4.34	-3.54	-3.15	-3.66	-9.20	-8.52	-6.58	-5.18
12/13 / 13/14	4.95	-3.60	-5.00	-3.12	-4.66	-3.54	-4.37	-3.59	-8.60	-3.58	-6.05	-4.39
13/14 / 14/15	3.76	-4.56	-6.35	-4.03	-5.52	-5.70	-7.64	-4.30	-13.77	-4.31	-12.63	-3.37
14/15 / 15/16	3.31	-3.17	-4.45	-3.16	-4.45	-4.27	-3.02	-0.60	-8.72	-3.18	-9.17	-6.17
Average (last 5 observ.)	3.99	-3.74	-5.05	-3.83	-5.03	-4.50	-4.00	-2.84	-9.56	-5.40	-7.97	-4.08
Average (last 10 observ.)	3.48	-4.40	-4.99	-4.04	-5.03	-4.82	-3.12	-3.75	-8.72	-6.35	-7.77	-3.29

**Retention Data - Number of Students Gained (+) / Lost (-) in French Immersion by Grade Intervals- Manitoba
School Years 2005-2006 to 2015-2016**



**% of Students Gained (+) / Lost (-) in French Immersion by Grade Intervals - Manitoba
School years 2005-2006 to 2015-2016**

**% of Students Gained (+) / Lost (-) in French Immersion by Grade Intervals - Manitoba
School years 2005-2006 to 2015-2016**

