



PROGRAMS AND STUDY AWARDS



cmeC

Council of
Ministers
of Education,
Canada

Conseil des
ministres
de l'Éducation
(Canada)

Canada

Manitoba 

PROGRAMS AND STUDY AWARDS

	Deadlines
<u>EXPLORE (spring and summer sessions)</u>	1 February 28
<u>DESTINATION CLIC (summer session)</u>	2 March 31
<u>MANITOBA - QUÉBEC Six-Month Student Exchange Program</u>	3 March 31
<u>L'Université de Saint-Boniface Student Bursary</u>	4 September 30
<u>Study bursary for a one-week summer program at the Université de la Paix in Caen, France</u>	5 March 15
<u>French Language Studies Bursary</u>	6 May 31
<u>French Language Studies Bursary</u>	7 May 31
<u>Official Minority Language Teacher Bursaries</u>	8 April 30
<u>ODYSSEY - Full-Time Official Language Assistant Program</u>	10 February 28
<u>List of institutions that offer French and/or French-Immersion programs</u>	10

For more information or application forms, please contact:

Michelle Landry-Nanka

Coordinator of Official Languages Programs
Bureau de l'éducation française Division
509 - 1181 Portage Avenue
Winnipeg MB R3G 0T3

Telephone: 204-945-6935
Toll free in Manitoba: 1-877-866-4242
E-mail : languesofficielles@gov.mb.ca

or visit the website at: www.edu.gov.mb.ca



Discover another region of Canada and use this opportunity to improve your knowledge of French.

EXPLORE offers you five weeks full of opportunities to make discoveries, meet new people, and exchange ideas in a stimulating setting for learning your second language. **EXPLORE** your country and your personal capabilities!

EXPLORE is a five-week intensive language-learning course. You can take the course in the spring or summer, whichever you prefer!

EXPLORE offers courses adapted to your level (beginner, intermediate or advanced) as well as many activities allowing you to meet with others from across the country who share your desire to learn or improve their second language.

The bursary is worth \$ 2,200¹. It covers the following:

- tuition fees for the course
- meals
- instructional materials
- accommodations



Eligibility Criteria

To participate in **EXPLORE**, you must:

- ♦ be a Canadian Citizen or permanent resident (those studying in Canada on a student visa are not eligible),
- ♦ have completed at least Grade 11 or be at the postsecondary level by the time your course begins, and
- ♦ have been a full-time student for at least one semester during the current school year.

Some useful facts

- ♦ Participants will live in a student residence on campus or with a homestay family whose members speak French.
- ♦ The \$2,200¹ bursary will be paid directly to the teaching institution. It does not cover the travel costs to your course location, a non-refundable registration fee, and pocket money while you are there.
- ♦ The bursaries are awarded by random selection based on provincial and territorial allotments and institutional quotas. Priority is given to those who have never received a bursary through the program. We make every effort to place you in one of the schools you have chosen, but you may be asked to go to a school other than those indicated on your application form.

Credit transfers are possible!

Some courses are credit courses. It is your responsibility to contact the institution to which you wish to transfer these credits to discuss this possibility.

Deadline

The deadline to submit your application form is February 28.

www.myexplore.ca

¹ Please note that this amount is considered taxable income.



DESTINATION CLIC is a program filled with new discoveries and experiences. It gives you the opportunity to meet people you'll never forget and to achieve your personal goals.

Discover just how much you have in you to accomplish! Join others like you who are looking for another asset to their career.

DESTINATION CLIC is your opportunity to exchange and discover different francophone communities in Canada, in Ontario, in New Brunswick or in Quebec. It's your choice!

A summer three-week program is offered to students enrolled in grade 8 or 9.

The bursary worth \$2,000[†] covers the following expenses:

- the cost of the French course
- the meals
- a part of the travel costs
- all instructional materials
- accommodations for the duration of the program

Eligibility Criteria

To participate in **DESTINATION CLIC**, you must:

- ♦ be enrolled in a French-language school (french as a first language),
- ♦ be a Canadian Citizen or permanent resident (those studying in Canada on a student visa are not eligible),
- ♦ be enrolled in Grade 8 or 9 during the school year that precedes the course, and
- ♦ have your permanent residence outside Quebec.

Some useful facts

- ♦ **DESTINATION CLIC** is a three-week intensive language course and cultural exchange. You'll have classes and themed activities every day.
- ♦ To participate in **DESTINATION CLIC**, you have to live on campus.
- ♦ The \$2,000[†] bursary is paid directly to the host institution. You will be reimbursed approximately half of your travel costs once you have completed the program. The only cost to you is part of the travel costs, a registration fee and pocket money.

Credit transfers are possible!

Some courses are credit courses. It is your responsibility to contact the institution to which you wish to transfer these credits to discuss this possibility.

Deadline

The deadline to submit your application form is March 31.

www.destinationclic.ca

[†] Please note that this amount is considered taxable income.



MANITOBA - QUÉBEC Six-Month Student Exchange Program

Would you like to travel to Quebec, discover a new culture, experience a different lifestyle and improve your French language skills? The [MANITOBA-QUEBEC SIX-MONTH STUDENT EXCHANGE PROGRAM](#) may be for you!

The [MANITOBA-QUEBEC SIX MONTH STUDENT EXCHANGE PROGRAM](#) is offered to French Immersion students and Basic French students who will be in Grade 10 or 11 next September. Manitoba participants host their Quebec counterparts for three months starting in September. The pairs attend the same school and the Quebec students live with the Manitoba students' families. In February, the Quebec student hosts the Manitoba student for the same length of time and under the same conditions.

What are the requirements of the program?

- ◆ School boards, schools and parents must consent to participate in the project.
- ◆ Schools must interview candidates and their families and select the participants.
- ◆ Families must be able to afford and accommodate the Quebec students for three months.

Who can apply?

The candidates must have:

- ◆ a mature attitude,
- ◆ the ability to adapt,
- ◆ an openness to other cultures,
- ◆ a good knowledge of French.

What is the cost?

Participating families must pay part of the airfare as well as living expenses for their visiting student. The Bureau de l'éducation française Division covers the remaining round-trip travel costs from Winnipeg to Quebec City. School authorities cover any tuition costs.

Deadline

The deadline for submitting your application form is March 31.

www.edu.gov.mb.ca/k12/students/sep.html



L'UNIVERSITÉ DE SAINT-BONIFACE STUDENT BURSARY

Université de Saint-Boniface

Pursue your postsecondary studies in French at l'Université de Saint-Boniface and receive a \$500 bursary from the Bureau de l'éducation française!

These bursaries are offered to students of l'Université de Saint-Boniface who are registered for university courses or courses offered by l'École technique et professionnelle. A supplementary bursary is also offered to five students who are pursuing studies to obtain a Bachelor of Education with a specialty in Science Education.

Eligibility Criteria

To be eligible for this bursary, you must:

- ♦ be a Canadian Citizen or permanent resident,
- ♦ be a resident of Manitoba, and
- ♦ be enrolled in:
 - a minimum of 70% course load (per session) at l'École technique et professionnelle, or
 - be qualified for enrolment in a minimum of four full courses (24 credit hours or the equivalent), three of which are offered in the French language.

Other information

Application forms are available at the Registrar's Office at l'Université de Saint-Boniface.

Deadline

The deadline to submit your bursary application form is September 30 for the fall session and January 31 for the winter session.



http://www.edu.gov.mb.ca/bursaries/post_sec.html



STUDY BURSARY FOR A ONE-WEEK SUMMER PROGRAM AT THE UNIVERSITÉ DE LA PAIX IN CAEN, FRANCE

If you are a Université de Saint-Boniface student who wishes to promote and advocate for human rights and peace, you are invited to participate in a one week all expenses paid program offered by the *Université de la Paix* which will take place in Caen in Lower Normandy.

This one of a kind program is offered at the beginning of July by the *Institut international des droits de l'homme et de la paix* (ZIDHP).

The Bureau de l'éducation française of Manitoba offers a bursary worth \$2,500 to help cover transportation costs (plane and train) between Winnipeg and the city of Caen.

The *Institut* will cover your tuition fees, accommodations, meals and costs related to instructional materials.

Critères d'admissibilité

As a participant, you will attend conferences, as well as take part in seminars, workshops, work groups and presentations in front of a jury made up of members of the *Barreau de Caen*. In conjunction with the seminars, the *Université de la Paix* is offering guided tours of landmarks such as the *Mémorial de la Paix*, the Normandy landings of June 6, 1944 and the *Mont Saint-Michel*.

For more information, please contact:

Sébastien Botreau-Bonneterre

Directeur de l'Institut international des droits de l'homme et de la paix (zidhp)

Maison des Quatrans

25 rue de Geôle

1400 Caen-France

Tel. (reception) 0-11-33 -2- 31 -79-23-89

Tel. (direct line) 0-11-33-2-31-26-30-91

sebastien.botreau-bonneterre@iidhp.eu

Zidhp.eu



INTENSIVE FRENCH IMMERSION STUDIES BURSARY

for out-of-province studies from
September to April

You are an Anglophone Manitoba resident and you want to be completely immersed in the French language and culture outside your home province? The [FRENCH IMMERSION STUDIES BURSARY](#) will help you achieve this goal!

French Immersion Intensive Programs are offered from September to April in various postsecondary institutions in Quebec. You will participate in ample activities which will facilitate and accelerate your knowledge of the French language and its culture!

This bursary is worth a maximum of \$2,500 and is available as a supplementary financial aid for travel costs, living expenses or any other costs incurred related to your out-of-province studies.

Eligibility Criteria

To be eligible for this bursary, you must:

- ◆ be a Canadian Citizen or permanent resident,
- ◆ be a resident of Manitoba,
- ◆ be registered full-time in a French Immersion Intensive Studies Program offered in a Canadian bilingual or French-language institution outside Manitoba or be eligible to apply for such a program, and
- ◆ have English as your first official language.

Other information

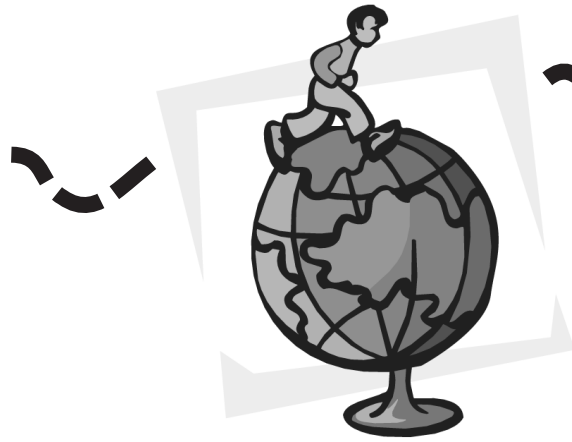
- ◆ You must contact your institution of choice for details concerning their program. Once you are registered, you can apply for the bursary.
- ◆ A list of institutions offering such programs can be found on page 10 of this booklet.
- ◆ The bursary will be paid in two installments during your year of studies; the first in December and the second in March.

Deadline

The deadline to submit your bursary application is May 31 for the fall session and October 15 for the winter session.



http://www.edu.gov.mb.ca/bursaries/post_sec.html



FRENCH LANGUAGE STUDIES BURSARY

for studies outside Manitoba from
September to April

You are a Manitoba resident wishing to pursue your postsecondary study program in French, but you must leave the province of Manitoba to do so?

Fortunately, the **FRENCH LANGUAGE STUDIES BURSARY** worth \$2,500 is available to you as a supplementary financial aid for living expenses and/or tuition fees related to your out-of-province studies.

Eligibility Criteria

To be eligible for this bursary, you must:

- ◆ be a Canadian Citizen or permanent resident,
- ◆ be a resident of Manitoba,
- ◆ be enrolled in:
 - a postsecondary study program which is not offered in French in Manitoba;
 - a study program at a Canadian French-language or bilingual postsecondary institution outside Manitoba; and
 - (or intend to enroll in) a minimum of four full courses (24 credit hours or the equivalent), three of which are offered in the French language.

Other information

The bursary will be paid in two installments during your year of studies; the first in December and the second in March.

Deadline

The deadline to submit your bursary application is May 31.



http://www.edu.gov.mb.ca/bourses/post_sec.html



OFFICIAL MINORITY LANGUAGE TEACHER BURSARIES

You are a Manitoba teacher, and are teaching or intend to teach French in a school offering the French immersion, French program, or Basic French course and wish to improve your knowledge of French or to discover new pedagogical teaching methods?

Register for one of the following programs offered between April 1 and August 31 and receive a bursary from the Bureau de l'éducation française!

Course/Program	Bursary Amount
a French Immersion Program outside Manitoba (minimum of 2 week duration)	\$300 per week (up to a maximum of \$1,200)
a credit course offered in French at a bilingual or Francophone institution	\$300 per course (up to a maximum of \$1,200)
ACELF summer course	\$1,000

French Immersion for Teachers (FIT) Bursary

French Immersion for Teachers (FIT) bursary

FIT is a three-week language training program offered in July. The program uses the communicative/ experiential method through themes such as food, travel and health.

The \$ 800 bursary for FIT will be paid directly to l'Université de Saint-Boniface on behalf of the candidates who successfully complete the course.

Mini - French Immersion for Teachers (Mini-FIT) bursary

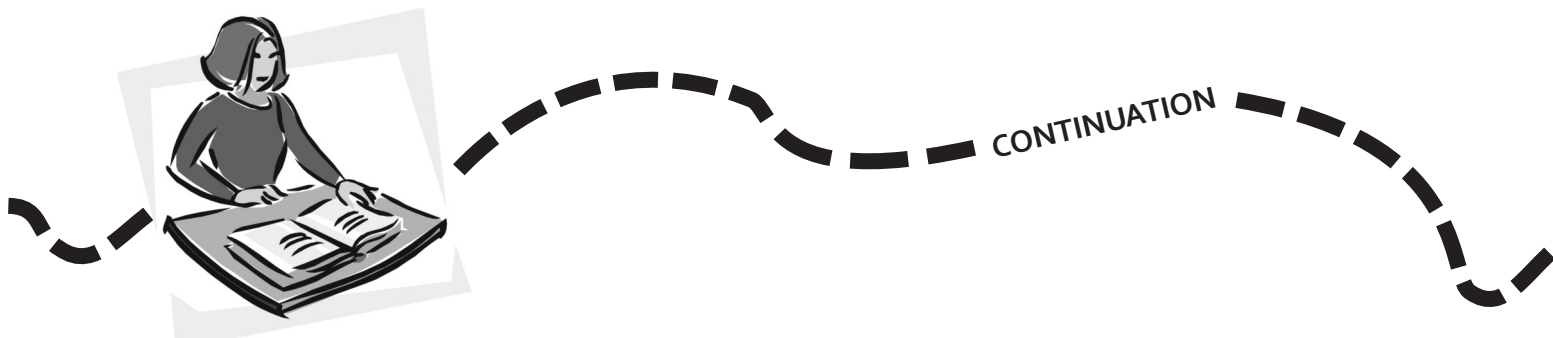
Mini-FIT is a course offered twice during the school year (a spring session and a fall session). Each session consists of courses and socio-cultural activities offered over two weekends. Participants must be at a minimum Beginner 3 level.

The bursary covers tuition fees for the course and a portion of substitute costs, if needed.

For more information regarding FIT and/or Mini-FIT, please call the Division de l'éducation permanente at 204 233-0210.

Deadline

The deadline to submit your application for all teacher bursaries (other than Mini-FIT) is April 30.



**APPELS program offered at Brandon University
(Apprentissage pour professeurs en langue seconde)**

In addition to the teachers' bursaries, the Bureau de l'éducation française Division provides grants to Brandon University for the following programs:

- ♦ APPELS: this course is for all teachers who wish to improve their French and pedagogical skills.
- ♦ APPELS EN-CORE: this course is for teachers at an intermediate or higher French level who desire a more in-depth study in reading and writing.

For more information, please contact Brandon University/Faculty of Education at 204-727-9626.



www.edu.gov.mb.ca/k12/proflearn/teacher_bursary.html



Full-Time Official Language-Assistant Program

Undertaking this **ODYSSEY** means having the opportunity to discover another part of Canada and to make a difference in the lives of young people in your host community.

You will work as a Language Assistant to support the teacher and have the opportunity to lead language activities in English or French (depending on the province to which you will be assigned) in an elementary or secondary classroom.

You will help students who want to learn a second language and discover the culture that goes with it. You will also have time to explore your host region and its culture.

As a Language Assistant, you will be paid \$18,500¹. You will work 25 hours per week from September to May.

Furthermore, if you are working outside your home province, you will receive four travel allowances.

Other information

- ◆ In most cases, you'll leave your home province or territory to work in a rural or suburban area in another province or territory.
- ◆ You'll take part in a compulsory training session for the program in Quebec City in August, which will help you succeed in your Odyssey.

Eligibility Criteria

To take part in **ODYSSEY**, you must:

- ◆ be proficient in both oral and written English or French (depending on the province to which you will be assigned),
- ◆ be a Canadian Citizen or permanent resident (those studying in Canada on student visas are not eligible), and
- ◆ have studied for at least one session at a postsecondary institution within the last ten years.

Deadline

The deadline to submit your application is February 28.

www.myodyssey.ca

¹ Please note that this amount is considered taxable income.

INSTITUTIONS THAT OFFER FRENCH-IMMERSION PROGRAMS FOR TEACHERS AND/OR GENERAL PUBLIC

INSTITUTION	CONTACT	ADDRESS
Université du Québec à Trois-Rivières	<i>Mr. Daniel Lavoie</i> Director	École internationale de français Université du Québec à Trois-Rivières Trois-Rivières QC E-mail : eif@uqtr.ca Ph. : (819) 376-5124 or 1 (888) 343-8645 Fax : (819) 376-5166
www.uqtr.ca/eif		
Université du Québec à Chicoutimi	<i>Mrs. Jasmine Paradis-Laroche</i> Manager <i>Mrs. Josée Simard</i> Program Manager	École de langue française et de culture québécoise Université du Québec à Chicoutimi Chicoutimi QC E-mail : elf@uqac.ca Ph. : 1 (888) 545-5036 or (418) 545-5036 Fax : (418) 545-5016
elf.uqac.ca/		
Université Laval	<i>Mrs. Thérèse Guay</i> Special French Programs for non-francophones	École de langues de l'Université Laval Pavillon Charles-de-Koninck Québec QC E-mail : elul@elul.ulaval.ca Ph. : (418) 656-2131, ext. 6714 Fax : (418) 656-7018
www.elul.ulaval.ca/en/our-courses/		
Université de Montréal	<i>Mrs. R. Biba Fakhouri</i> Director	École de langues Continuing Education Université de Montréal Montreal QC E-mail : info-lang@fep.umontreal.ca Ph. : (514) 343-6179 Fax : (514) 343-5984
fep.umontreal.ca/formations/ecole-de-langues/francais-langue-seconde/		
Cégep de Jonquière	<i>Mr. Guy Paradis</i> Coordinator <i>Mrs. Paule Néron</i> Educational Manager	Centre linguistique Cégep de Jonquière Jonquière QC E-mail : centling@cjonquiere.qc.ca Ph. : (418) 542-0352 or 1 (800) 622-0352 Fax : (418) 542-3536
langues-jonquiere.ca/en/summer/french-immersion-for-adult-group-course.html		

INSTITUTIONS THAT OFFER FRENCH-IMMERSION PROGRAMS FOR TEACHERS AND/OR GENERAL PUBLIC

INSTITUTION	CONTACT	ADDRESS
Université du Québec à Montréal	<i>Mrs. Hibrat Agonafir</i> Undergraduate Program Management Assistant Agonafir.hibrat@uqam.ca	École de langues Université du Québec à Montréal Montreal QC E-mail : langues@uqam.ca Ph. : (514) 987-3000, ext. 8900 Fax : (514) 987-7994
www.langues.uqam.ca/		
Collège Saint-Charles-Garnier	<i>Mrs. Valentina Stagnani</i> Director of International Programs	French Summer Programs Collège Saint-Charles-Garnier Québec QC E-mail : Ateliers@collegegarnier.qc.ca Ph. : (418) 681-0107, ext. 305 Fax : (418) 681-0118
garnier-international.com/french-summer-program/overview/		
CÉGEP de Trois-Rivières	<i>Mrs. Geneviève Lemelin</i> Coordinator	L'école de français Service de la formation continue Cégep de Trois-Rivières Trois-Rivières QC E-mail : ecole.de.francais@cegeptr.qc.ca Ph. : (819) 376-1721, ext. 2184 Fax : (819) 691-1256
www.frenchimmersionprogram.ca/en/home.html		
Université de Moncton	<i>Mrs. Marie-Claude Rioux</i> Director marie-claude.rioux@umcs.ca	Le Centre international d'apprentissage du français Université de Moncton - Shippagan Campus Shippagan NB E-mail : ciaf@umcs.ca Ph. : 1 (800) 363-8336, press 3 or (506) 336-3636 Fax : (506) 336-3478
www.umoncton.ca/umcs/		
Université de la Colombie-Britannique <i>*Le programme pour les enseignants est offert au Collège Mérici à Québec.</i>	<i>Mr. Francis Andrew</i> Director	French Centre Academic Performance Division UBC Continuing Studies Vancouver BC E-mail : frenchcentre@ubc.ca Ph. : (604) 822-0801 Fax : (604) 822-0886
www.frenchcentre.ubc.ca/quebec/index.html		