

**Manitoba Advanced Education and Literacy**

Annual Report  
2007-2008





His Honour the Honourable John Harvard, P.C., O.M.  
Lieutenant Governor of Manitoba  
Room 235 Legislative Building  
Winnipeg MB R3C 0V8

Your Honour:

I have the privilege of presenting for the information of Your Honour the Annual Report of Manitoba Advanced Education and Literacy for the fiscal year ending March 31, 2008.

Respectfully submitted,

Original signed by ***Diane McGifford***

Honourable Diane McGifford



Honourable Diane McGifford  
Minister of Advanced Education and Literacy  
Room 162 Legislative Building  
Winnipeg MB R3C 0V8

Dear Minister,

I am pleased to present the Annual Report of Manitoba Advanced Education and Literacy (MAEL) for the period April 1, 2007 to March 31, 2008.

Over the past year, the Department has been engaged in activity to strengthen key priorities concerning access, affordability and quality throughout the post-secondary and adult learning systems. Our approach to responding to the range of needs presented by Manitoba's adult learners has been to provide a continuum of opportunities from literacy at all levels to sustainable funding for post-secondary education. We have explored new approaches to programming including innovative ways to increase access to and retention in post-secondary education for disadvantaged, under-represented, and low-income students.

A growing priority for Manitoba, and at the Council of Ministers of Education, Canada (CMEC), is the need to strengthen existing education data for use in supporting decision-making and for reporting to the public. In 2007/08, MAEL initiated the development of a departmental data management strategy to guide our efforts in this area. The Department also participates in discussions on education data through CMEC and with Statistics Canada.

In November 2007, Bill 6: The Adult Literacy Act received royal assent. The Literacy Act, which will be the first in Canada, commits the government to develop an adult literacy strategy and formalizes the Manitoba Adult Literacy Program. We recognize that the literacy skills of some Manitobans are not at levels that enable them to participate fully in an increasingly knowledge intensive society and we intend to remedy this, building on the solid foundation of adult focused programs provided through the adult learning centres and community-based literacy programs. Over \$17 million is provided for this programming. Currently, there are 45 registered Adult Learning Centres (ALCs) delivering programming at 85 sites across the Province. Four of the registered ALCs are operated by First Nations on reserve. As well, there are 38 agencies providing adult literacy programming. Twenty-nine of these have adult literacy as their primary program focus and 9 provide both Adult Literacy and ALC programming. In 2007/08, approximately 9,000 adults participated in adult learning centre and literacy programming designed to enable Manitobans to improve their ability to understand and employ printed information and to obtain high school credentials so they can access higher education and/or better employment opportunities.

The Government of Manitoba continues to invest substantially in our post-secondary system recognizing its importance to students, the provincial economy and society as a whole. The contribution of the system to critical economic objectives as described in Manitoba's Action Strategy for Economic Growth include the development of high performing skilled workers capable of the innovative thinking required for productivity increases and product development.

In 2007/08, \$338.0 million was allocated to The University of Manitoba, The University of Winnipeg, Brandon University, Collège universitaire de Saint-Boniface, and the University College of the North of which \$9.9 was included under capital grants. In addition, \$5.0 million in grants were allocated to the Canadian Mennonite University, Providence College and Seminary, William and Catherine Booth College and the Steinbach Bible College.

In 2007/08, \$70.7 million was allocated in grants to Red River College, Assiniboine Community College and the École technique et professionnelle, of which \$1.8 million was included under Capital Grants. In addition, \$0.6 million was provided to the Winnipeg Technical College.

Enrolment at the universities and university college was comprised of 30,572 full-time students and 23,309 part-time students. Community college full-time enrolments for 2007/08 were estimated at 14,360 and part-time enrolments were estimated at 28,495.

The Manitoba Student Aid Branch continues to provide financial assistance for educational purposes to post-secondary students whose finances limit their educational opportunities. Assistance is provided through Canada Student Loans, Manitoba Student Loans, the Canada Millennium Scholarship Bursary, the Manitoba Bursary, the Manitoba Graduate Scholarship and a variety of other grant, scholarship and incentive programs. In 2007/08, Manitoba has also been participating in Federal/Provincial collaborative efforts to revitalize student aid programs in the short and long term.

The progress we have made over 2007/08 towards key departmental objectives has been achieved through the efforts of our knowledgeable and skilled staff and I am confident they will continue to meet the challenges ahead with the same commitment and determination.

Respectfully submitted,

Original signed by ***Heather D. Reichert***

Heather D. Reichert, CA  
Deputy Minister



## **Table of Contents**

<b>TITLE</b>	<b>PAGE</b>
<b>Preface</b>	
Report Structure .....	1
Mandate .....	1
Mission .....	1
Responsibilities .....	2
Programming and Services Overview .....	3
Organization Chart .....	9
<b>PART A – OPERATING EXPENSES</b>	
<b>Administration and Finance</b>	
Minister’s Salary .....	13
Executive Support .....	13
Policy and Planning Branch .....	13
Administration and Finance .....	15
<b>Support for Universities and Colleges</b>	
Council on Post-Secondary Education .....	17
University Operating Grants .....	18
Post-Secondary Strategic Initiatives Fund .....	18
College Grants .....	18
College Expansion Initiative .....	18
Access Program .....	19
Advanced Education and Training Assistance .....	19
Stevenson Aviation Centre .....	20
<b>Manitoba Student Aid</b> .....	21
<b>Adult Learning and Literacy</b> .....	27
<b>Capital Grants</b> .....	31
<b>Costs Related to Capital Assets</b> .....	33

**PART B – CAPITAL INVESTMENT**

Capital Investment ..... 37

**Financial Information**

Reconciliation Statement ..... 41  
Expenditure Summary ..... 42  
Revenue Summary ..... 49  
Five Year Expenditure and Staffing Summary ..... 51

**Performance Reporting** ..... 53

**The Public Interest Disclosure (Whistleblower Protection) Act**..... 67

**Appendices**

**Table**  
Student Aid Program Awards..... 73

## **Preface**

In September 2006, through government restructuring, the Training Division of Manitoba Advanced Education and Training moved to the new department of Competitiveness, Training and Trade (MCTT) and the profile of literacy was increased in the formation of the new department of Advanced Education and Literacy.

## **Report Structure**

This Annual Report is organized in accordance with the Department's appropriation structure, as set out in the Main Estimates of Expenditure of the Province of Manitoba for the fiscal year ending March 31, 2008. The report includes information at the main and sub-appropriation levels relating to the Department's objectives and actual results achieved. Financial performance information is provided with expenditure and revenue variance explanations, and a five-year adjusted historical table of staffing and expenditures.

## **Mandate**

Manitoba Advanced Education and Literacy (MAEL) is charged with the responsibility of setting priorities and allocating funds for the government's investment in the Province's post-secondary institutions, literacy and adult learning initiatives and student financial assistance.

The Department works in collaboration with school divisions, colleges, a university college, universities, other provincial/territorial governments, the federal government, and other private and public education and training bodies to deliver a high quality adult learning and post-secondary education that meets the needs of all Manitobans.

In addition to identifying broad educational goals, the Department is responsible for the overall legislative and regulatory structure governing the post-secondary and adult learning systems.

The Department is also responsible for providing policy direction on administrative matters of the adult learning and post-secondary education system under authority of the following Acts of the Consolidated Statutes of Manitoba:

- The Adult Learning Centres Act
- The Adult Literacy Act – Bill 6
- The Brandon University Act
- The Colleges Act
- Le Collège universitaire de Saint-Boniface Act
- The Council on Post-Secondary Education Act
- The Degree Granting Act
- The Department of Labour and Immigration Act  
(as it applies to certain training programs)
- The Private Vocational Institutions Act
- The Student Aid Act
- The University College of the North Act
- The University of Manitoba Act
- The University of Winnipeg Act

## **Role and Mission**

Together with our partners and stakeholders, MAEL's mission is to:

- Provide Manitobans with relevant, affordable, accessible and high quality education and adult learning opportunities;

- Provide financial assistance to enable Manitobans to overcome financial barriers to access post-secondary education;
- Support seamless and coherent linkages across the adult learning and post-secondary systems;
- Lead the development, implementation and evaluation of an adult literacy strategy for Manitoba; and
- Provide leadership and facilitate the contribution of the adult learning and post-secondary systems to Manitoba's economic and social goals.

In carrying out its mission, the Department is guided by the following principles:

- Accessibility/Affordability
- Quality
- Relevance
- Inclusiveness
- Responsiveness
- Innovation
- Accountability

## **Responsibilities**

The primary responsibility of MAEL is to facilitate high quality learning at the post-secondary and adult learning levels. Emphasis is placed upon enhancing learner performance, delineating roles and responsibilities across the post-secondary education and adult learning systems, and facilitating the development and sharing of new knowledge.

The overall responsibilities of the Minister include:

- Setting strategic direction for post-secondary and adult learning, and articulating appropriate legislative and regulatory structures.
- Providing leadership to, and working in co-operation with post-secondary education, adult learning institutions and other organizations to bring about education reform.
- Setting priorities for, and allocating funds to the Province's public post-secondary education system, to adult learning programs and to the student financial assistance program.
- Working in co-operation with colleges, universities and other education and training institutions and organizations to ensure that all Manitobans have access to high quality adult learning and post-secondary education.
- Representing the Province in negotiations with the federal and other governments related to post-secondary education, adult learning, and education finance, as well as participating in relevant meetings with public and private sector organizations.
- Supporting seamless and coherent linkages across the adult learning systems.
- Providing leadership and facilitating the contribution of the adult learning and post-secondary systems to Manitoba's economic and social goals.

## **Programs and Services Overview**

For the year ending March 31, 2008, the programs and services of the Department were budgeted under six main appropriations: Administration and Finance, Support for Universities and Colleges, Manitoba Student Aid, Adult Learning and Literacy, Capital Grants and Costs Related to Capital Assets.

Manitoba's commitment to adult learning and post-secondary education includes funding two community colleges and École technique et professionnelle, one university college, three universities and Collège universitaire de Saint-Boniface as well as literacy programming and adult learning centres, and student financial assistance.

Accessibility to the adult learning and post-secondary system remained a critical priority for the Department in 2007/08 with a focus on the particular needs of individuals from low income and under represented groups. Studies that continued through 2007/08 are expected to contribute to the development of policy coherence in this area.

### **I Post-Secondary Education**

In 2007/08, enrolment at the universities and university college was comprised of 30,572 full-time students and 23,309 part-time students.

Community college full-time enrolments for 2007/08 were estimated at 14,360 and part-time enrolments were estimated at 28,495.

The University College of the North (UCN) continues to offer a comprehensive range of post-secondary education programs for northern Manitobans including developmental, trade, career, technical and undergraduate degrees. It offers learner-centred programming through two campuses and 12 regional centres located throughout northern Manitoba. In 2007/08, two new centres have been added in Grand Rapids and Oxford House. Two degree programs have been approved and funded: 1) the Bachelor of Arts in Aboriginal Northern Studies; and 2) Baccalaureate in Midwifery.

For additional information on Post-Secondary Education, please refer to the 2007/08 Annual Report of the Council on Post-Secondary Education.

### **II Manitoba Student Aid**

Manitoba Student Aid provides supplemental financial assistance to those students whose finances limit their educational choices and who might otherwise be unable to obtain a post-secondary education. In 2007/08, Manitoba Student Aid had the authority to loan up to \$30.7 million in Manitoba Student Loans. As well, approximately \$51.0 million was budgeted for bursary and grant programs including: \$2.6 million for ACCESS bursaries; \$0.6 million for other grants and bursaries; \$5.0 million for the Manitoba Scholarship and Bursaries Initiative; \$3.0 million for Canada Study Grants; \$8.26 million for the Manitoba Bursary Fund; \$12.8 million for the Canada Millennium Scholarship Fund and programs; \$2.0 million for the Manitoba Graduate Scholarships program; \$13.9 million for Tuition Rebate Grants; and \$2.9 million for the Medical Student/Resident Financial Assistance Program, which is cost recoverable from the Department of Health. Approximately 11,000 applications for Student Aid were processed in the 2007/08 program year.

Manitoba Student Aid also manages the Manitoba Student Loan Portfolio, which includes the disbursement and collection of direct-financed loans. Student Aid has contracted with Credit Union Central of Manitoba (CUCM) for the use of their loan administration system to facilitate the provision and collection of programs. The Loan Services Unit also administers student loan accounts using effective debt management practices, including Interest Relief and Debt Reduction in Repayment and revision of loan terms that will assist students in repaying their student loans, and minimize overall Government risk and loan default rates. In 2007/08, approximately \$6.2 million was budgeted

for this program, including \$4.8 million for Provision for Loss, Interest Subsidy, and previous Risk Premiums with national banks, and \$1.4 million for Interest Relief and Debt Reduction Programs.

Manitoba Student Aid also administers the Private Vocational Institutions Act and Regulations.

### **III Adult Learning and Literacy**

Adult Learning and Literacy (ALL) administers and supports the development and delivery of adult focused programming through adult learning centres and community based literacy programs in Manitoba. The release in 2006 of the International Adult Literacy and Skills Survey (IALSS) drew attention to the issue of literacy. MAEL has acted on the increased provincial priority that has been placed on literacy. In November 2007 Bill 6, *The Adult Literacy Act* received royal assent, which mandated an Adult Literacy Strategy. A comprehensive consultation process is being undertaken to inform the strategy.

Adult literacy programs and adult learning centres provide tuition free programming to enable adults to obtain the literacy/essential skills and prerequisite credentials to pursue further education and training. More than 40% of program participants are employed full or part time, which underscores the importance of these programs for skill development of under-educated adults to enable their full participation in the labour force. Over \$17 million was provided for literacy and adult learning centre programming in 2007/08. There are 45 registered adult learning centres in Manitoba and 38 agencies offering literacy programming. In 2007/08, approximately 9,000 adults took advantage of programming offered.

ALL also offers training and professional development workshops for literacy practitioners and adult learning centre teachers. ALL also administers the General Education Development (GED) Testing Service. During the reporting period, 70 test sessions were offered in 13 centres.

### **IV Corporate Initiatives**

Three initiatives have shared mandates and staff from Education, Citizenship and Youth (MECY) and Advanced Education and Literacy: Aboriginal Education, Sustainable Development and the Technical Vocational Initiative. MECY and MAEL also share the support of the Aboriginal Education Directorate, Human Resource Services, Financial and Administrative Services, and Systems and Technology Services.

#### **1. Aboriginal Education**

The mandate of the Aboriginal Education Directorate (AED) is to provide leadership and co-ordination for the departmental initiatives within Aboriginal education and training. AED objectives are: to ensure an integrated approach to Aboriginal education and training within MECY, MAEL, and in collaboration with Competitiveness, Training and Trade (MCTT); to promote the removal of systemic barriers to Aboriginal student success; and to participate in, and ensure linkages and collaboration with inter-sectoral research and policy initiatives related to Aboriginal education and training.

AED coordinates the implementation of the Aboriginal Education Action Plan and provides support and leadership to all branches and units within MECY, MAEL and MCTT on matters as they relate to Aboriginal education and training.

For more information on the Aboriginal Education Directorate, refer to the Annual Report for the Department of Education, Citizenship and Youth.

## **2. Sustainable Development**

Education for Sustainable Development (ESD) was a high priority for MAEL in 2007/08. The Department strengthened cooperation and partnerships on ESD regionally, nationally and internationally with government, non-government organizations, business, industry, communities and youth to further develop, communicate and promote ESD within Manitoba and across Canada. Manitoba continued to serve as the lead jurisdiction for the Council of Ministers of Education, Canada's (CMEC) international work on ESD. Through the CMEC, Manitoba continued to serve on the United Nations Economic Commission for Europe's (UNECE) ESD steering committee to develop ESD indicators, report on progress and implement the UNECE ESD Strategy and Implementation Framework. The Department continued to support the Manitoba ESD Working Group (MESDWG) and its activities that included partnering with the Science Teachers Association of Manitoba (STAM) to plan an International ESD Conference (Choose the Future) to be delivered in the fall 2008.

MAEL continued to support post-secondary institutions in developing and implementing policy, regulations and operational frameworks that support sustainable development (SD) and ESD. In 2007/08, the Department partnered with York University to plan the delivery of the Sustainability and Education Academy in Manitoba in 2008, a program for senior officials of school divisions, provincial ministries of education and faculties of education to help incorporate sustainable development into policies, programs and create living and learning environments that model sustainability.

The Department continued to promote ESD-focused research. In 2007/08, MAEL partnered with the International Institute for Sustainable Development (IISD) and the University of Northern British Columbia to undertake a research process to benchmark and assess the knowledge, skills and behaviour of Manitoba citizens and students at Grades 6, 8, 10 and 12. The Department also supported the work of the United Nations Economic Commission for Europe, through the CMEC to report on ESD progress in Canada.

AEL worked to ensure that policy, regulatory and operational frameworks, operations and programs support ESD both internally and externally. Branches within MAEL carried out management procedures in line with sustainable development including decisions, planning, budgeting and sustainable procurement practices. Branch SD initiatives are highlighted in their respective reports.

## **3. Technical Vocational Initiative**

The original Technical Vocational Initiative (TVI), a joint initiative between MECY and MAEL, began in April 2004 to revitalize technical vocational education in Manitoba. In 2007, TVI was renewed for four years (2007-2011) and also became part of a third department, Competitiveness, Training and Trade. A core objective of the Initiative is to address labour market needs, as reflected in the existing and growing skilled labour shortage. From a broader perspective, TVI is part of an effort to offer Manitobans a comprehensive continuum of technical vocational education and training pathways that are universally accessible, seamless across education levels, synchronized with labour market needs and career focused. The renewed TVI continues to build on the successes achieved in relation to the six Pillars of Action, namely:

- to improve the image of vocational careers;
- to enhance awareness of technical vocational programming and trade related opportunities;
- to ensure relevance to labour market needs;
- to facilitate program articulation between high schools and colleges;
- to develop strategies to address technical vocational teacher currency and shortages;
- and
- to increase funding to support technical vocational equipment upgrades.

The expected outcomes of the TVI are to have:

- increased student enrolment rates in high school and college technical vocational programs;
- increased graduation rates from high school and college technical vocational programs;
- increased transition rates from high school to college technical vocational programs;
- increased employment rates into technical vocational careers; and
- increased community capacity to address skilled labour shortages, allowing for greater provincial competitiveness in industry sectors.

Operations: A core three person staff is responsible for carrying out the day-to-day activities of the unit and to develop appropriate strategies and action plans for the Action Pillars. An executive director provides leadership and direction to ensure action and progress on the Action Pillars, reports on TVI activities and plans, and liaises with a broad range of stakeholders and groups to solicit support and co-operation for the goals of the Initiative.

The TVI consultant provides ongoing, regular contact with the field and monitors the progress of projects and the status of TVI supported activities, and is responsible for providing action plans and status reports.

The team is complemented by one administrative support staff who tracks expenditures and provides overall administrative support.

Activities: TVI has initiated various activities related to each of the Action Pillars. Most of these activities are ongoing or multi-year.

Image: TVI works with schools, colleges, businesses, industry, labour and department partners MECY, MAEL, and MCTT - Apprenticeship Branch to promote a more positive and accurate image of trades and technical vocational education.

The Technical Vocational Initiative:

- Presents to educational stakeholder groups: participates at Rotary Career Symposium, Brandon Career Fair, Brandon Rural Forum, EastMan Career Fair, Red River College Career Day, Northern Aboriginal Festival and Community Awards, University College of the North Career Expo and Job Fair; Tri-College Apprenticeship Forum
- Sponsored the Manitoba Association of Parent Councils (MAPC) Conference (2007);
- Created and distributed Technical Vocational Initiative Essential Skills classroom posters to Grades 8 - 12 classes throughout the Province; and
- Attends and participates in the Northern Aboriginal Festival and Community Awards and the Thompson Career Fair.

Awareness: Many awareness activities are linked to image activities, including Demonstration Projects, presentations and promotional activities. The "Lessons Learned" project committee promotes networking opportunities, assesses project impact, and facilitates information dissemination.

The Technical Vocational Initiative:

- In partnership with MECY's Instruction, Curriculum and Assessment Branch, provided the "New Real Game" online career tool to over 300 Manitoba schools and also sponsored professional development for teachers.
- Was a key partner providing a two day career development in-service with Phil Jarvis in Frontier School Division in March 2008.
- Promotes the Senior Years Apprenticeship Option (SYAO): with ongoing TVI strategic and financial support (Demonstration Project Funding) to schools, SYAO continues to grow. The number of students enrolled in the program as of spring 2008 is approximately 700. This is nearly a 400% increase over the past four years.

- Web site, available at [www.edu.gov.mb.ca/tvi](http://www.edu.gov.mb.ca/tvi) provides current information on relevant activities:
  - equipment and demonstration project information;
  - access to various documents; and
  - links to related, relevant sites.

Program relevance and currency:

- To ensure that curricula are current and relevant to students, business, industry and general labour market needs, twelve programs are under review: Automotive Technology, Commercial Food Services, Building Construction, Hairstyling, Health Care Aide, Autobody, Welding, Electrical, Electronics, Drafting, Information Technology and Media Production. Notable features in the new curricula will be an identifiable emphasis on essential skills, sustainable development and safety units.
- TVI will provide an online teaching resource (CDX On-line) for all automotive programs in the Province. A two day training session for instructors will be held in May 2008.
- CATIA (Computer Aided Three Dimensional Interactive Application) Project: CATIA is a multi platform Computer Assisted Design/ Computer Assisted Manufacturing/ Computer Assisted Engineering commercial software suite used for product development through conceptualization, design, manufacturing and analysis. The Technical Vocational Initiative sponsored CATIA project is well underway. The overall project objective is to provide innovative, state-of-the-art design engineering learning opportunities for Manitoba youth. There are currently ten schools from throughout the Province involved in the project. Red River College, Assiniboine Community College and the Faculty of Engineering at the University of Manitoba are partners in the project. In conjunction with Dassault Systeme, Re-engineering Australia (REA) and Engineering.com, TVI was able to provide participating schools and colleges with state-of-the art design software with a commercial license value of approximately \$7.5 million. TVI continues to work closely with REA on the development, training and implementation of this project, a first in Canada.

Articulation: a program articulation framework template has been developed to facilitate the effective articulation between secondary and post-secondary programming.

Vocational teacher currency and shortages: TVI promotes, funds and conducts professional development activities that help maintain and/or enhance vocational teacher effectiveness, awareness of, and currency with industry and trade developments. TVI continues to support strategies to remove barriers and disincentives to trades people considering entering the teaching profession.

Equipment and Professional Development: for equipment upgrades and associated professional development

2004/2005	Awarded \$664,100 to 17 schools across the Province for equipment upgrade purchases and \$35,300 for associated professional development.
2005/2006	Awarded \$639,200 to 39 vocational schools across the Province for equipment upgrade purchases and \$59,000 for associated professional development.
2006/2007	Awarded \$599,600 to 29 vocational schools across the Province for equipment upgrade purchases and \$55,000 for associated professional development.
2007/2008	Awarded \$599,700 to 27 vocational schools across the Province for equipment upgrade purchases and \$61,000 for associated professional development.

Demonstration Projects: to address one or more of the Technical Vocational Revitalization Pillars of Action

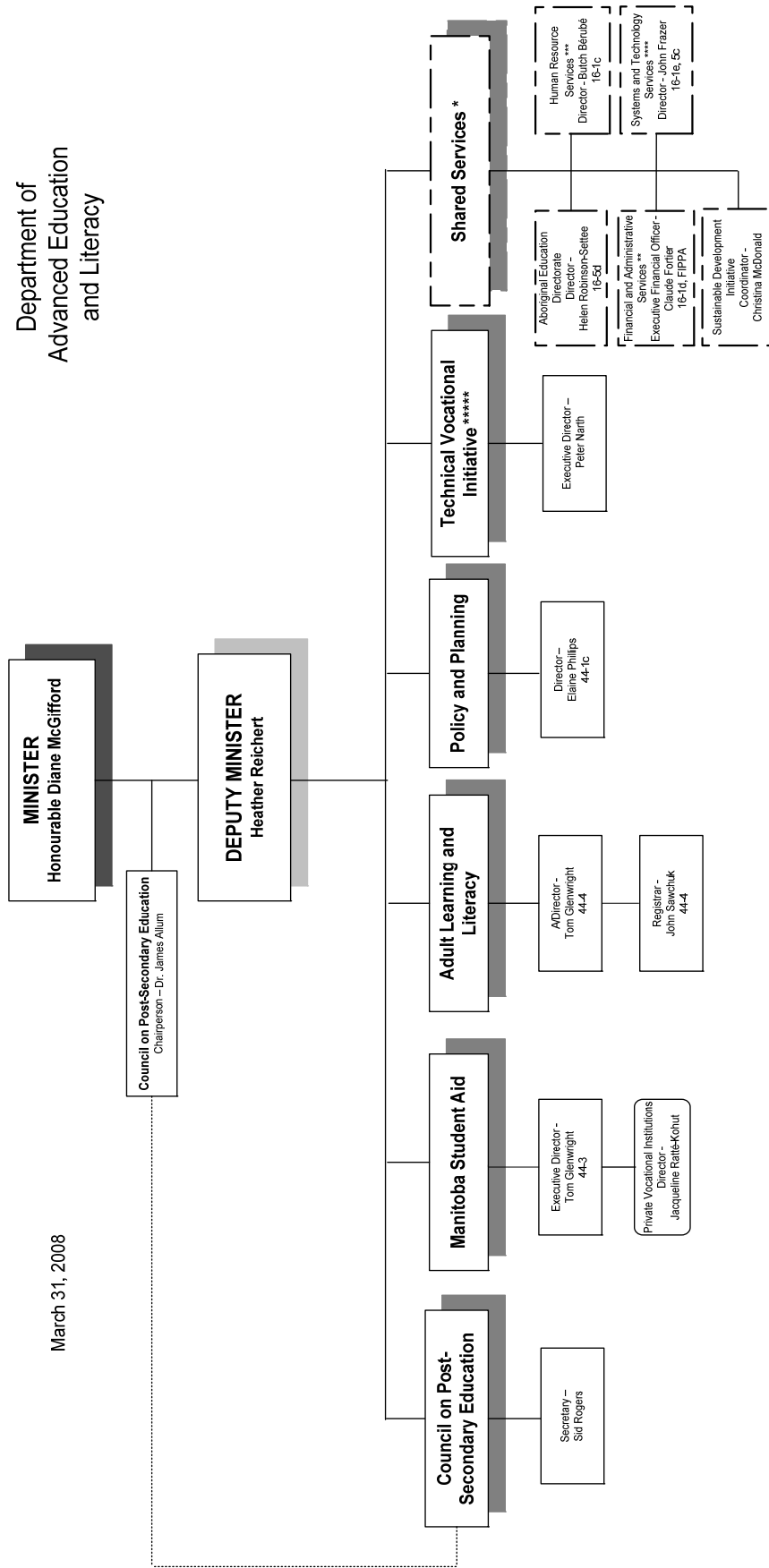
- 2004/2005      Awarded \$205,000 to 16 schools/divisions.
- 2005/2006      Awarded \$300,000 to 28 schools/divisions; 12 continuing and 16 new projects.
- 2006/2007      Awarded \$298,000 to 27 schools/divisions; 12 continuing and 15 new projects
- 2007/2008      Awarded \$464,000 to 20 schools/divisions; 3 continuing and 17 new projects.

Committees:

The TVI sponsors and participates in a number of committees.

- Technical Vocational Education Advisory Committee (TVEAC): is a twenty-one member committee representing eighteen stakeholder groups, including colleges, Manitoba Teacher's Society parent councils, vocational and industrial arts teachers, school administrators, labour, business and industry, aboriginal education and Apprenticeship.
- Lessons Learned Committee: brings together school/division project leaders to share demonstration project status, impact and lessons learned.
- Program Review Committees: The Committees review technical vocational program curricula for articulation agreements and develop recommendations and templates to facilitate the process.
- Safety Co-ordination Committee – TVI sponsored safety co-ordination event for work experience co-ordinators and supervisors, held in Carman in March, 2008.
- Technical Vocational Leadership Council – comprised of vocational school administrators; TVI is a member of this group
- Professional Learners Group – a TVI Demonstration Project sponsored a group of Senior Years Apprenticeship Option (SYAO) co-ordinators and supervisors from across Manitoba. The group provides networking, information sharing, problem solving opportunities for members and a single voice for dealing with outside bodies. TVI is a regular participant at meetings.
- Career Development Initiative – provincial CDI links with a number of TVI initiatives related to career development and awareness. TVI is represented on steering and sub-committees.

Department of  
Advanced Education  
and Literacy



\* Provides services to Education, Citizenship and Youth and Advanced Education and Literacy

\*\* Also provides services to Labour and Immigration

\*\*\* Also provides services to Labour and Immigration and Competitiveness, Training and Trade

\*\*\*\* Also provides services to Competitiveness, Training and Trade

\*\*\*\*\*An initiative of Advanced Education and Literacy, Education, Citizenship and Youth, and Competitiveness, Training and Trade



## **PART A – OPERATING EXPENSES**



# Administration and Finance

The Administration and Finance Division provides for the executive planning and management of departmental policies and programs. Administrative support is provided through the Department of Education, Citizenship and Youth in the areas of human resource services, financial and administrative services, sustainable development, systems and technology services and initiatives related to Aboriginal education and training.

## Executive Support

This line provides the additional compensation to which individuals appointed to the Executive Council are entitled.

The Minister's and Deputy Minister's office provide educational leadership to Manitoba's education systems, which ensure the provision of high quality and equitable training and education programs together with support services. In addition, administrative leadership is provided to the Department to ensure the effective, efficient co-ordination of human and financial resources.

### 1 (a) Minister's Salary

Expenditures by Sub-Appropriation	Actual	Estimate		Variance	Expl. No.
	2007/08	FTE	2007/08	Over (Under)	
	\$000		\$000	\$000	
Salaries and Employee Benefits	42.1	1.00	42.1	0.0	
<b>Total Sub-Appropriation</b>	<b>42.1</b>	<b>1.00</b>	<b>42.1</b>	<b>0.0</b>	

### 1 (b) Executive Support

Expenditures by Sub-Appropriation	Actual	Estimate		Variance	Expl. No.
	2007/08	FTE	2007/08	Over (Under)	
	\$000		\$000	\$000	
Salaries and Employee Benefits	434.0	6.00	444.1	(10.1)	
Other Expenditures	90.2		98.0	(7.8)	
<b>Total Sub-Appropriation</b>	<b>524.2</b>	<b>6.00</b>	<b>542.1</b>	<b>(17.9)</b>	

## Policy and Planning Branch

The Policy and Planning Branch supports the policy development, planning processes and intergovernmental activity of MAEL. Supporting co-ordination across the Department, with other Provincial departments and with other levels of government is a key role of the Branch.

The objective of the Branch is to enable a co-ordinated corporate approach by providing information and analysis, enabling external and internal linkages and facilitating communication. The Branch accomplishes this through:

- Facilitating department-wide policy development and strategic planning
- Providing analytical support related to post-secondary education and adult learning
- Supporting the Department to become more strategic and co-ordinated in the development, acquisition, analysis and use of data to support decision-making and reporting.
- Developing, co-ordinating and disseminating information that supports the delivery of adult learning and post-secondary education programs and activities

- Participating in co-ordination with other governments on education issues, including providing support for the Council of Ministers of Education, Canada (CMEC) and the Canadian Education Statistics Council (CESC) CESC is a pan-Canadian partnership between the CMEC and Statistics Canada on education data and research.
- Liaising with the Department of Competitiveness, Training and Trade (which co-ordinates Manitoba's participation in the Forum of Labour Market Ministers) for the joint consideration of education and labour market issues

### **Support for Policy Development**

Activities in 2007/08 included support for the development of policy related to:

- Data, information and knowledge management
- Improved education and labour market outcomes for adult Aboriginal learners
- Improved post-secondary outcomes for under-represented groups
- Improved literacy outcomes for Manitobans
- Improved labour market outcomes for new immigrants including credential recognition

### **Support for Strategic Planning**

Activities in 2007/08 included support to Department senior managers in the following planning areas:

- Co-ordinating linkage to government-wide planning processes and supporting linkage to resource requirements through the estimates process
- Branch Planning
- Labour Market Strategy for Immigrants
- Aboriginal Education Action Plan
- Adult Literacy Strategy
- International Education Strategy
- Cross-departmental Career Development Initiative
- Data Management Strategy
- HR Renewal Strategy

### **Intergovernmental Relations**

The Branch continues to serve as the primary provincial liaison with the CMEC.

- Support is provided to:
  - many pan-Canadian activities including education data, post-secondary capacity, literacy action plan, Aboriginal Education Action Plan and international education;
  - Canada's participation in international education conferences (with the Minister, Deputy Minister and senior officials representing Canada at important forums); and
  - furthering the policy-based research capacity across provinces/territories.
- Branch staff prepares briefing material to support the participation of the Minister and the Deputy Minister at the semi-annual meetings of CMEC and Advisory Committee of Deputy Ministers of Education (ACDME).
- Branch staff represents Manitoba (adult learning and post-secondary education) on the Strategic Management Committee of the Canadian Education Statistics Council.

### **Analysis/Research**

Activities in 2007/08 included:

- Budget/Throne Speeches
  - The Branch prepared summaries and analyses of provincial and federal throne and budget speeches, highlighting the implications for Advanced Education and Literacy.
- Analytical work in support of Department initiatives

Throughout the year, the Branch prepared a number of analytical documents in support of various department initiatives and priorities. These included:

- Adult Literacy Strategy and consultation
- Labour Market Strategy for Immigrants
- Aboriginal Education
- Legislation
- Data management
- Career Development Initiative

## Sustainable Development

One Policy and Planning Branch staff person represents Advanced Education and Literacy on the Education for Sustainable Development Working group led by Education, Citizenship and Youth.

### 1 (c) Policy and Planning

Expenditures by Sub-Appropriation	Actual 2007/08	Estimate 2007/08		Variance Over (Under)	Expl. No.
	\$000	FTE	\$000	\$000	
Salaries and Employee Benefits	150.3	3.00	224.1	(73.8)	1
Other Expenditures	49.1		70.5	(21.4)	2
<b>Total Sub-Appropriation</b>	<b>199.4</b>	<b>3.00</b>	<b>294.6</b>	<b>(95.2)</b>	

1. Under expenditure is due to a vacancy in one position for a portion of the year, and two under-filled positions, partly offset by other minor variances.
2. Under expenditure reflects a reduction in branch activity mainly due to a part-year vacancy in one position as the incumbent was appointed on an acting basis to a position external to the branch.

## Administration and Finance

Administrative support is provided through the Department of Education, Citizenship and Youth in the areas of human resource services, financial and administrative services, systems and technology services and initiatives related to Aboriginal education and training.

### 1 (d) Administration and Finance

Expenditures by Sub-Appropriation	Actual 2007/08	Estimate 2007/08		Variance Over (Under)	Expl. No.
	\$000	FTE	\$000	\$000	
Other Expenditures	750.0		750.0	0.0	
<b>Total Sub-Appropriation</b>	<b>750.0</b>	<b>0.00</b>	<b>750.0</b>	<b>0.0</b>	



# Support for Universities and Colleges

## Council on Post-Secondary Education

The Council on Post-Secondary Education approves new programs and allocates financial resources to the public universities and community colleges of Manitoba. The Council also co-ordinates post-secondary programs and policy development within the system. Specific details of Council activities may be found in its annual report.

As stated in its legislation, the mandate of the Council on Post-Secondary Education is to allocate financial resources to the public universities, community colleges, and to private religious colleges of the Province; to plan and co-ordinate the development of a post-secondary education system that promotes excellence in and accessibility to education; supports the co-ordination and integration of services and facilities; and promotes fiscal responsibility.

In 2007/08, the Council allocated \$338.0 million in grants to The University of Manitoba, The University of Winnipeg, Brandon University, Collège universitaire de Saint-Boniface, and the University College of the North, of which \$9.9 million was included under Capital Grants. In addition, the Council allocated \$5.0 million in grants to the Canadian Mennonite University, Providence College and Seminary, William and Catherine Booth College, and the Steinbach Bible College in support of approximately 1,700 full-time equivalent qualifying students.

In 2007/08, the Council allocated \$70.7 million in grants to Red River College, Assiniboine Community College, and the École technique et professionnelle, of which \$1.8 million was included under Capital Grants. In addition, the Council provided \$0.6 million to the Winnipeg Technical College.

In addition to operating and capital grants, the Council allocated \$0.5 million to stimulate change and to reward innovative developments from the System Restructuring Envelope and \$1.3 million to fund new programming from the Strategic Program Envelope. In 2007/08, the Council allocated \$7.7 million to the Access program to provide program support.

### Sustainable Development

One of the Council Secretariat staff is a member of the Education Sustainable Development Group. In addition to committee membership, the Council supports sustainable development activities by purchasing recycled paper and toner cartridges and other supplies. Where possible, the Council makes use of duplex printing and copying, waste paper is sent for recycling on a regular basis, and teleconferencing of meetings takes place, when possible.

#### 2 (a) Council on Post-Secondary Education

Expenditures by Sub-Appropriation	Actual	Estimate		Variance Over (Under) \$000	Expl. No.
	2007/08 \$000	FTE	2007/08 \$000		
Salaries and Employee Benefits	888.6	13.00	806.0	82.6	
Other Expenditures	467.8		535.5	(67.7)	
<b>Total Sub-Appropriation</b>	<b>1,356.4</b>	<b>13.00</b>	<b>1,341.5</b>	<b>14.9</b>	

## 2 (b) University Operating Grants

Expenditures by Sub-Appropriation	Actual 2007/08 \$000	Estimate 2007/08		Variance Over (Under) \$000	Expl. No.
		FTE	\$000		
Operating Grants	331,458.6		328,399.0	3,059.6	1
<b>Total Sub-Appropriation</b>	<b>331,458.6</b>	<b>0.00</b>	<b>328,399.0</b>	<b>3,059.6</b>	

1. Over expenditure reflects tuition compensation budgeted in the Post-Secondary Strategic Initiatives Fund (44-2C) but paid to universities from University Operating Grants (44-2B), partly offset by savings resulting from lower than anticipated payments to the University of Winnipeg for the repayment of loans related to the Science Complex, funding budgeted in University Operating Grants to be paid from the Access Program (44-2F,) and an adjustment for interest related to an outstanding loan to the University of Winnipeg

## 2 (c) Post-Secondary Strategic Initiative Fund

Expenditures by Sub-Appropriation	Actual 2007/08 \$000	Estimate 2007/08		Variance Over (Under) \$000	Expl. No.
		FTE	\$000		
Grants	1,840.0		5,896.1	(4,056.1)	1
<b>Total Sub-Appropriation</b>	<b>1,840.0</b>	<b>0.00</b>	<b>5,896.1</b>	<b>(4,056.1)</b>	

1. Under expenditure relates to tuition compensation for universities and for colleges budgeted in the Post-Secondary Strategic Initiatives Fund but paid from University Operating Grants (44-2B) and College Grants (44-2D), respectively.

## 2 (d) College Grants

Expenditures by Sub-Appropriation	Actual 2007/08 \$000	Estimate 2007/08		Variance Over (Under) \$000	Expl. No.
		FTE	\$000		
Operating Grants	69,401.9		68,984.4	417.5	
<b>Total Sub-Appropriation</b>	<b>69,401.9</b>	<b>0.00</b>	<b>68,984.4</b>	<b>417.5</b>	

## College Expansion Initiative

The College Expansion Initiative (CEI) supports the growth of Manitoba's public college system by working collaboratively with the four public colleges and the Council on Post-Secondary Education.

CEI's investments are primarily focused on new educational programs, although significant contributions have also been made to strategic infrastructure projects. CEI presents expansion proposals to the Council on Post-Secondary Education on behalf of the colleges. The Council has the authority to grant funding approval for all expansion activity.

In 2007/08, CEI invested an additional \$2.9 million in the college system. The investments have resulted in the creation of new and expanded programs that meet labour market needs. The following goals guide CEI in determining the direction of new investments: address labour market needs; give attention to the needs of under-served groups; enhance youth participation; improve

student success; encourage innovation in the college system; and stimulate workplace-based programming.

## 2 (e) College Expansion Initiative

Expenditures by Sub-Appropriation	Actual 2007/08	Estimate 2007/08		Variance Over (Under)	Expl. No.
	\$000	FTE	\$000	\$000	
College Expansion Initiative Grants	44,317.5		32,557.5	11,760.0	1
<b>Total Sub-Appropriation</b>	<b>44,317.5</b>	<b>0.00</b>	<b>32,557.5</b>	<b>11,760.0</b>	

1. *Over expenditure relates to outstanding loans to Red River College and to Assiniboine Community College, converted to grants at year-end as per current accounting policy, partly offset by the deceleration of the nursing program expansion at the University College of the North, Technical Vocational Initiative costs for Program Standards and Articulation Programs, paid from the Council on Post-Secondary Education but budgeted in the College Expansion Initiative, and lower costs than budgeted for other Technical Vocational Initiative programming.*

## Access Program

The Access program provides post-secondary educational opportunities to Manitoba residents from under-represented groups. These programs enhance accessibility and success at Manitoba's public post-secondary institutions for individuals from under-represented groups.

Primary activities undertaken by the Council on Post-Secondary Education consist of co-ordination and administrative support for the Access program and services offered by The University of Manitoba, Brandon University, The University of Winnipeg, Red River College, and the University College of the North. The provision of financial support to some of the students enrolled in these programs is administered by Manitoba Student Aid.

The Access program provides funding to five post-secondary institutions for specialized programs for individuals who have faced barriers to post-secondary education. As of November 2007, enrolments for 2007/08 were 852. Individuals from under-represented groups served by accessibility activities include Aboriginal, people with disabilities, single parents, and immigrant and refugee students.

## 2 (f) Access Program

Expenditures by Sub-Appropriation	Actual 2007/08	Estimate 2007/08		Variance Over (Under)	Expl. No.
	\$000	FTE	\$000	\$000	
Grants	7,680.8		7,608.9	71.9	
<b>Total Sub-Appropriation</b>	<b>7,680.8</b>	<b>0.00</b>	<b>7,608.9</b>	<b>71.9</b>	

## Advanced Education and Training Assistance

The Council on Post-Secondary Education provides grant funding in support of Inter-provincial Training Agreements. Funding is provided to enable Manitoba students to be educated in professions where demand has been identified and training is not available in Manitoba. At present, programs being funded include Veterinary Medicine at the University of Saskatchewan and Optometry at the University of Waterloo.

**2 (g) Advanced Education and Training Assistance**

Expenditures by Sub-Appropriation	Actual	Estimate		Variance	Expl. No.
	2007/08 \$000	FTE	\$000	Over (Under) \$000	
Grants	3,881.3		3,994.3	(113.0)	
<b>Total Sub-Appropriation</b>	<b>3,881.3</b>	<b>0.00</b>	<b>3,994.3</b>	<b>(113.0)</b>	

**Stevenson Aviation Centre**

Delivers nationally accredited aviation and aerospace training programs to address skill and labour market requirements. Department staff are seconded to Red River College to manage the operations and instructional delivery.

**2 (h) Stevenson Aviation Centre**

Expenditures by Sub-Appropriation	Actual	Estimate		Variance	Expl. No.
	2007/08 \$000	FTE	\$000	Over (Under) \$000	
Salaries and Employee Benefits	1,347.3	20.50	1,547.2	(199.9)	
Less: Recoverable from Red River College	(1,347.3)		(1,547.2)	199.9	
<b>Total Sub-Appropriation</b>	<b>0.0</b>	<b>20.50</b>	<b>0.0</b>	<b>0.0</b>	

# Manitoba Student Aid

The Manitoba Student Aid Branch, through the administration of the Canada Student Loans Program (CSLP) and the Manitoba Student Aid Program, provides financial assistance for educational purposes to post-secondary students whose finances limit their educational opportunities.

Manitoba Student Aid is a need-based program designed to supplement, not replace, the resources available to post-secondary students. The cost of a post-secondary education is considered to be the primary responsibility of students and their immediate family. Assistance is based on an assessment of financial need that compares the applicant's allowable educational costs to his or her available resources.

The Student Aid Act, which was proclaimed in 2001 and legislatively established the Manitoba Bursary, requires a higher degree of accountability for the Student Aid Program, and promotes the key principles of accessibility and affordability to post-secondary education for Manitoba students.

Loans of up to \$350 per week are available through a 60/40 federal-provincial cost-sharing arrangement. The maximum Canada Student Loan (CSL) is \$210 per week of study and the maximum Manitoba Student Loan (MSL) is \$140 per week of study. One common assessment determines both CSL and MSL awards, making it possible for students to have a complete financial picture of the resources available to them.

Manitoba Student Aid also administers the Canada Millennium Scholarship Bursary to Manitoba's post-secondary students on behalf of the Canada Millennium Scholarship Foundation (CMSF). The federal government, in response to rising student loan debt and loan default rates, established the CMSF in 1998. Manitoba's share of the \$2.5 billion scholarship endowment, based on population, is projected to be \$10.6 million every program year until the expiration of the CMSF funding in 2008/09. These awards are granted to those Manitoba Student Aid recipients who have the highest assessed financial need, who have successfully completed at least one year of previous post-secondary studies, and who are studying at the undergraduate level in Canada. For the 2007/08 academic year, approximately 2,800 Manitoba students will be awarded these bursaries. These awards are used to pay down the students' loan debt.

The Manitoba Bursary is designed to improve affordability to post-secondary education for Manitoba students. This bursary will assist all Manitoba students studying in Canada, in particular those in the first year of studies and those in graduate programs, since these groups are not eligible for CMSF bursary awards. The 2007/08 budget for the Manitoba Bursary was \$8.26 million. Approximately 1,600 students will receive this bursary in 2007/08.

Manitoba Student Aid administers the Canada Student Loan Program's (CSLP) Canada Access Grant for Students from Low-Income Families. This grant is intended to cover up to 50% of the tuition, to a maximum of \$3,000, and is available to first-time, first-year dependent students from low-income families who are eligible for Canada Student Loans.

Manitoba Student Aid also administers the modified Canada Access Grant for Students with Permanent Disabilities, worth up to \$2,000 per year and available to students with permanent disabilities. This grant is disbursed at the start of the program and is available to students who are eligible for a full-time or part-time Canada Student Loan and meet all of the other disabilities eligibility criteria.

Manitoba Student Aid administers special targeted assistance programs such as the student-funding component of the Access Bursary and the Prince of Wales/Princess Anne Award for Aboriginal students. Manitoba Student Aid also administers the following federal Canada Study Grant programs: for students with permanent disabilities, up to \$8,000 to offset the costs of exceptional education-related services or equipment; for women in Ph.D. studies, up to \$3,000 if enrolled in non-

traditional programs; and for high-need part-time students, up to \$1,200 if they are unable to study on a full-time basis. A federal grant is also available, which provides students with dependants up to \$60 per week of study.

In 2007/08, Manitoba Student Aid continued to provide Millennium Adult Learner Bursary funding to eligible students. These bursaries are funded by the Canada Millennium Scholarship Foundation and the Province of Manitoba.

In 2007/08, Manitoba Student Aid continued to provide the Millennium Manitoba Opportunities Grants to eligible students. These grants are funded by the Canada Millennium Scholarship Foundation. There are two components to these grants: the Low-Income Dependent Student component, which provides first year students from low-income families a grant of 50% of their tuition (maximum \$3,000); and the Aboriginal Independent Student component, which provides first year Aboriginal independent students with a grant of 100% of their tuition (maximum \$4,000).

In 2007/08, Manitoba continued to provide core funding for the Career Trek program. Career Trek is a program targeted to at-risk Grade 5 and 6 students. Career Trek is designed to educate students about the importance of post-secondary education and the accessibility of the post-secondary system in Manitoba.

Manitoba Student Aid provides Tuition Rebate Grants to Manitoba public colleges and universities in recognition that institutions are providing students with a 10% tuition fee reduction from 1999/2000 tuition fee levels. Student Aid also provides \$5 million in grants, through the Manitoba Scholarship and Bursaries Initiative (MSBI), to match private donations to Manitoba's public post-secondary institutions towards scholarships and bursaries.

In 2007/08, Manitoba Student Aid increased the number of graduate scholarships that supported research-based graduate studies to help attract and retain the highest quality students from within and outside the Province. This assistance provided \$7,500 per year for up to four years for Doctoral students (to supplement the University of Manitoba Graduate Fellowships of \$16,000 per year) and \$15,000 per year for up to two years for Masters students. In 2007/08, the program assisted 104 Masters students and 60 Doctoral students.

Manitoba Student Aid is in the first year of phase three of the three-year initiative to provide the Fly Higher Aboriginal Education Awards. These awards are funded through MSBI in partnership with the Business Council of Manitoba (BCM) and the governments of Canada and Manitoba. Up to \$150,000 per year raised by BCM through private donations from their members will be matched by the same level of funding from both the federal and provincial governments totaling \$450,000. Any surplus of funds over awarded amounts is held in endowment. The purpose of this partnership is to increase Aboriginal participation in post-secondary education and to increase their employment opportunities.

Manitoba Student Aid administers the Educational Assistance Option of the Medical Student/Resident Financial Assistance Program (MSRFAP) on behalf of the Department of Health. This option of the program provides financial assistance in the form of a conditional grant to students and residents studying medicine in the Province of Manitoba, as well as to Manitoba students undertaking medical studies in French at the University of Ottawa. Manitoba Medical Doctor graduates from The University of Manitoba, who are undertaking approved post-graduate medical programs at other Canadian and American universities, are eligible as well. Upon completion of their training, physicians who participate in the program commit to working in the Province of Manitoba for a period of one year for each grant they receive, or repay the money with interest.

Awards in the amount of \$15,000 are offered to undergraduate third- and fourth-year medical students. Awards in the amount of \$20,000 are offered to Medical Residents in either year of Family Medicine Practice. Family medicine doctors who take an additional year of Emergency Medicine or Anesthesia are eligible for an additional \$20,000. Residents in other approved residencies are

eligible for \$20,000 in each of two years. In 2007/08, 167 students received a total of \$3.0 million in conditional grants.

Manitoba Student Aid, in co-operation with the MB4Youth Division of Manitoba Education, Citizenship and Youth, administers the Youth Transition: From Work to Post-Secondary Education bursary program. In 2007/08, 8 students completed their work experience and received a \$3,000 bursary towards their post-secondary education.

Designation is the process by which institutions obtain the recognition that allows their students to be eligible to apply for government student loans. In January 2002, Manitoba Student Aid began implementing the Designation Policy approved by Cabinet. In autumn 2004, provincial/territorial governments, along with the federal government, began implementing the pan-Canadian Designation Framework. This national strategy is intended to strengthen student consumer protection, improve student loan repayment rates, and help students make informed choices about post-secondary education. Because student loans are taxpayer supported, institutions are now held accountable for the administration of these funds and for improving their students' success through review of graduation and employment rates. To support administrative compliance with the national strategy by 2007/08, Manitoba Student Aid had signed Memoranda of Understanding (MOU) with all of the designated educational institutions located in Manitoba. Manitoba Student Aid performed compliance reviews (administrative audits) on 11 institutions which were signatories to MOUs. In October 2007, Manitoba Student Aid held a forum to help designated institutions learn about best practices in student loan administration. At March 31, 2008, Manitoba was responsible for 58 designated institutions in the Province and had designated approximately 800 other institutions throughout the world.

Manitoba Student Aid has an interactive online application and website to provide greater access to students on a 24-hour/7-day-a-week basis. The online application MySAO (My Student Aid Application Online) uses cutting-edge technology to interact with applicants, determining the information required and guiding them to complete their application. Within minutes of submitting an online application, the students receive an estimate of financial assistance. Students applying online are also mailed a Notice of Assistance letter, which indicates the approximate amount of financial assistance they will receive (CSL and MSL awards). Approximately 90% of applications were submitted via the Internet in 2007/08. The MySAO application process contributes to Manitoba Student Aid's sustainable development activities by decreasing the processing of hard copy documents. Enhancements to MySAO in 2004/05 included the ability for the student to determine their Manitoba Student Loan account balance, what (if any) information is outstanding to process the application, and the ability for the student to update their application with revised information.

For the 2007/08 program year, Manitoba Student Aid processed 11,411 applications for Canada and Manitoba Student Loans. Student Aid also processed 199 applications for Part-time Canada Student Loans. Approximately 50,000 requests for information and assistance were handled over the telephone. Services were also provided in-person to an additional 21,000 current and potential applicants. The Exceptional Review (Appeal) Committee reviewed 321 appeals.

Manitoba Student Aid's Student Advisors provide one-on-one interaction with at-risk students, including those with high financial or other special needs. Advisors also promote program awareness, help reduce student loan default rates, and liaise with Manitoba post-secondary institutions. As well, the Aboriginal Liaison Officer partners and networks with the Aboriginal Community including the Access Programs, at participating public universities and colleges, regarding aboriginal post-secondary accessibility and affordability policy issues.

The Loan Services Unit manages the Manitoba Student Loan portfolio including the disbursement and collection of direct financed loans. Student Aid has contracted with Credit Union Central of Manitoba (CUCM) for the use of their loan administration system to facilitate the provision and collection of loans. The Loan Services Unit also manages the administration of effective debt management programs (ex: Interest Relief, Debt Reduction in Repayment, and Revision of Terms),

which provide support to borrowers experiencing difficulty in meeting their repayment obligations, and minimize overall government risk and loan defaults. Student Aid continues to manage the portfolio of Manitoba Student Loans issued prior to August 2001, including the administration of interest subsidy, provision for loss, and risk premium payments.

### **Sustainable Development**

The Branch supports sustainable development by purchasing recycled paper and toner cartridges and other supplies. Where possible, the use of duplex copying is encouraged. In addition, the Branch encourages students to apply online using MySAO, which reduces paper product consumption. The Branch has incorporated an internal website for our newsletter (WaDaYaSAO).

### **Private Vocational Institutions Unit**

The Private Vocational Institutions (PVI) Unit administers The Private Vocational Institutions Act, and its attendant regulation, Manitoba Regulation 237/02. The office provides policy direction to the operators of private vocational institutions to ensure compliance with the Act and Regulation.

In 2007/08, five new private vocational institutions were registered and two existing institutions came under new ownership. No institutions were closed, either voluntarily or under duress. As of March 31, 2008, there was a total of 45 private vocational institutions registered, of which 29 had programming designated for the Canada/Manitoba student loan programs.

There were 2,524 enrolments at Manitoba private vocational institutions in the 2007 calendar year. The Training Completion Fund, which is a pool of monies to be used to help finance the completion of training for students should an institution cease to do business, had approximately \$823,000 held in trust at the end of the Fund's reporting (calendar) year.

### 3 (a-m) Manitoba Student Aid

Expenditures by Sub-Appropriation	Actual 2007/08 \$000	Estimate 2007/08		Variance Over (Under) \$000	Expl. No.
		FTE	\$000		
Salaries and Employee Benefits	3,852.6	65.25	3,623.1	229.5	
Other Expenditures	1,766.6		1,220.0	546.6	1
Loans and Bursaries	2,665.9		3,336.0	(670.1)	2
Manitoba Bursary Fund	8,260.0		8,260.0	0.0	
Manitoba Scholarship and Bursary Initiative	5,000.0		5,000.0	0.0	
Canada Millennium Scholarship Fund	11,599.7		12,785.5	(1,185.8)	3
Canada Study Grants	2,208.9		3,000.2	(791.3)	4
Tuition Rebate Grants	12,918.6		13,874.3	(955.7)	5
Medical Student/Resident Financial Assistance	3,151.3		2,891.3	260.0	6
Loan Portfolio Administration	3,793.2		4,761.0	(967.8)	7
Interest Relief and Debt Reduction	206.3		1,388.6	(1,182.3)	8
Manitoba Graduate Scholarships	2,000.0		2,000.0	0.0	
Less: Recoverable from Health	(3,151.3)		(2,891.3)	(260.0)	
<b>Total Sub-Appropriation</b>	<b>54,271.8</b>	<b>65.25</b>	<b>59,248.7</b>	<b>(4,976.9)</b>	

1. *Over expenditure reflects the write-off of assets related to a Student Financial Assistance application that is no longer in use.*
2. *Under expenditure reflects fewer qualified applicants than available awards due in part to increases in both the Canada and Manitoba Student Loan programs, and due to changes in the needs assessment criteria.*
3. *Under expenditure reflects fewer awards issued for the Adult Learner Bursary and Manitoba Opportunity Grants than budgeted.*
4. *Under expenditure reflects a reduction in the total number of financial assistance applications received for the current program year.*
5. *Under expenditure is the result of lower than anticipated enrolment at post-secondary institutions.*
6. *Over expenditure is due to the approval of a greater number of conditional grants resulting from a change in the application deadline date from September 15th to August 15th. [Note: Variance is offset by a corresponding increase in the recovery from Health (44-3M)].*
7. *Under expenditure reflects a reduction in the provision for loss component mainly due to fewer loans issued than budgeted, partly offset by an increase in the interest subsidy component resulting from an increase in the volume of loans outstanding and an increase in the average lending rate.*
8. *Under expenditure reflects a reduction in costs for interest relief and debt reduction supported by a favourable job market for students.*



## Adult Learning and Literacy

The objectives of Adult Learning and Literacy (ALL) are to enable Manitobans to have the ability to understand and employ information (reading, writing, numeracy) in daily living at work, at home, and in the community; and to obtain high school credentials so they can access higher education and/or better employment opportunities.

The objectives include developing the capacity in the Province to respond to the needs of the non-sequential adult learner with greater flexibility, effectiveness and efficiency. These objectives are met through the provision of three programs: Adult Learning Centres (ALCs), Community-based Adult Literacy, and General Education Development (GED) Testing Services. Efforts are being made to enhance curriculum and program articulation between literacy and adult learning centre programs, and between adult learning centres and post-secondary education. The professional staff of ALL provides service to the entire province.

### Adult Learning Centres

The Adult Learning Centres Act legislates a registration and governance process for Adult Learning Centres (ALCs), and provides a framework for educational and fiscal accountability for ALCs.

In the 2007/08 program year, 45 ALCs were registered, with 41 receiving funding from Adult Learning and Literacy. Four ALCs, Peguis Adult Education Learning Centre, Waywayseecappo Learning Centre, Canupawakpa First Nation and Lord Selkirk Park Adult Learning Centre, were registered and funded by sources that did not include ALL. Funding was also provided to:

- The Louis Riel Institute, \$175,000 for their core operation.
- Employment Solutions for Immigrant Youth, \$50,000 for a program aimed at helping young immigrant adults find employment and further their education in Manitoba.
- Adult Secondary Education Council (ASEC), \$2.2 in support of their annual conference.
- Career Cruising, \$22,000 for a career development software program that is used by ALCs and Literacy Programs.
- Literacy Partners of Manitoba, \$50,000 for provision of the Learn Line and to support the Learner Speaker's Bureau.

Year-end statistics for the 2006/07 school year show that 8,300 learners completed 11,170 courses for credit at ALCs. Eleven hundred twenty-eight (1,128) ALC learners graduated with a Mature Student High School Diploma and 132 graduated with a 28-credit high school diploma, for a total of 1,260 graduates. Four hundred nineteen (419) graduates were Aboriginal. Interim statistics for 2007/08 report 6,558 learners registered for approximately 15,964 courses at ALCs. By February 4, 2008, 4,641 courses had been completed for credit. Final 2007/08 statistics will be available in the fall of 2008.

Prior Learning Assessment and Recognition (PLAR) is a significant service to learners at ALCs.

- In 2007/08, 31 adult educators completed the PLAR Foundations training (40 hours). The current number of adult educators who have completed this training through ALL totals over 300.
- The majority of ALC programs have at least one staff member who has completed this training.

ALCs have established PLAR Advisory and PLAR Assessment Services to assist adult learners to receive credit for their formal and informal learning toward a Mature Student High School Diploma (MSHSD). Between July 1, 2006 and June 30, 2007, ALCs granted approximately 603 full and partial credits through PLAR. One hundred seventy-seven (177) learners graduated with a MSHSD in a shorter time with PLAR credits.

ALL is also responsible for registering dual credit courses for use in ALCs.

## **Adult Literacy Programs**

In 2007/08, Adult Learning and Literacy (ALL) provided grants to 38 organizations for adult and family literacy programming, including 29 agencies that provide literacy as their primary focus and 9 centres that provide both adult literacy and ALC programming.

The 2007/08 mid-year statistics collected in February 2008 indicated participation of approximately 2,095 individuals in community-based literacy activities. Mid-year reports indicated that 36% of participants were male and 64% female; 21% of participants were in the 18-25 age group, 46% in the 26-40 age group, 24% were in the 41-55 age group, 8% were over 55, and 1% were under 18; 27% self-identified as Aboriginal learners; 22% of participants were learners for whom English was not their first language (German, French, an Aboriginal language, and others); 40% of all participants were employed while enrolled.

Year-end statistics for 2007/08 are not available until the fall of 2008 (given that the program year ends June 30, 2008). However, year-end statistics for 2006/07 indicate that literacy learners are successful in achieving their goals. In 2006/07, 2,589 adults participated in literacy programming. Forty-two percent (42%) of participants were employed while enrolled in literacy programs and were able to increase their proficiency in job-related literacy skills. In addition, 7.8% reported that they found employment, 24% increased their literacy skill level, and 16% went on to further training.

In November 2007, Bill 6: The Adult Literacy Act received royal assent. The Adult Literacy Act, which will be the first in Canada, commits the government to develop an adult literacy strategy and formalizes the Manitoba Adult Literacy Program.

## **General Education Development (GED) Testing**

Adult Learning and Literacy (ALL) took over the management of GED testing in Manitoba in July 2006. Previously this service was housed with the Distance Learning and Information Technologies Unit of Manitoba Education, Citizenship and Youth (MECY).

GED operations are located in ALL's Brandon office. Between April 1, 2007 – March 31, 2008, a total of 70 test sessions were offered in 13 centres. Of the 380 individuals who participated in the testing, 233 passed.

## **Support Activities**

Staff of Adult Learning and Literacy provide training for literacy working groups, practitioners and volunteer tutors in community-based literacy programs, and to directors and teachers in adult learning centres. Staff also provide assistance in the development and acquisition of learning materials, assistance in program evaluation, and co-ordination of awareness raising and networking activities. In addition to the PLAR training described above, over 30 other professional development events for adult educators in ALCs and Literacy Programs were made available by ALL throughout the Province.

In 2007/08, ALL cost shared with MECY and Healthy Child Manitoba, a contribution of \$22,000 to support the CanWest Global 'Raise-a-Reader' initiative to support literacy and education programs in Manitoba. As a support to family literacy, ALL continues to sit on the steering committee of the Literacy for Life Fund (LLF), an initiative of the Winnipeg Foundation in partnership with the Winnipeg Public Library and Literacy Partners of Manitoba.

ALL continues to collaborate with the Adult Language Training Branch of Manitoba Labour and Immigration regarding:

- articulation and referral processes between English as an Additional Language (EAL) and ALC/Literacy programming; and
- appropriate supports for adult EAL learners in non-EAL learning environments.

ALL is a member of the Essential Skills committee and participates with Manitoba Competitiveness, Training and Trade in the implementation of an Essential Skills Framework for Manitoba.

Another major function of ALL is to assist the National Office of Literacy and Learning (NOLL) in the selection of literacy projects for their federal literacy grant program. NOLL projects contribute an essential support to the literacy and essential skills field, providing grants to areas that are not funded by the Province for demonstration projects, materials/curriculum development, research and promotion/awareness raising.

In addition, Adult Learning and Literacy continues to act as the Manitoba point of contact for the International Adult Literacy and Skills Survey (IALSS) 2003 and related research initiatives.

Adult Learning and Literacy is involved in activities designed to raise public awareness of literacy and adult education issues and best practices. ALL participates on the implementation team of the Northern Development Strategy. The position of Northern Program Consultant/Adult Literacy Coordinator supports all activities in the North. Staff assisted the Premier and the Council of the Federation (COF) with the call for nominations for the COF Literacy Award (Manitoba), selection committee and recipient selection, and arrangements related to the announcement and presentation. Staff also assisted the Lieutenant Governor's office in awarding the Lieutenant Governor's Medal for Literacy. In addition, ALL assisted community organizations, literacy programs, ALCs, the Adult Secondary Education Council (ASEC) and Literacy Partners of Manitoba to raise awareness through projects such as the International Literacy Day and Adult Learners' Month celebrations, the 1-800-LEARN Line and Family Literacy Day.

### Sustainable Development

The ALL Branch works hard to minimize the use of paper through purchasing only recycled paper, recycling all non-confidential documents, increasing use of electronic data storage and file management, including development and maintenance of a branch website and encouraging staff to avoid printing hard copies of documents. The goal of the Branch is to integrate sustainable development principles and guidelines into its regular activities on a continuous basis so that they become an integral part of the Branch's activities.

### 4 Adult Learning and Literacy

Expenditures by Sub-Appropriation	Actual	Estimate		Variance Over (Under)	Expl. No.
	2007/08 \$000	FTE	2007/08 \$000		
Salaries and Employee Benefits	871.3	10.00	744.4	126.9	1
Other Expenditures	399.5		405.9	(6.4)	
Adult Learning Centres	14,867.7		15,017.1	(149.4)	
Other Grants	2,061.6		2,059.6	2.0	
<b>Total Sub-Appropriation</b>	<b>18,200.1</b>	<b>10.00</b>	<b>18,227.0</b>	<b>(26.9)</b>	

1. *Over expenditure is mainly due to costs for two extended positions, costs for two step students, unrealized portion of the staff turnover budget, and costs for two GED examiners budgeted in Other Expenditures (44-4B) but now considered casual employees and paid from Salaries, partly offset by savings related to pension.*



## Capital Grants

Capital Grants provides a contribution towards capital expenditures of universities and community colleges. Additional information on the grants may be found in the Council on Post-Secondary Education Annual Report.

### 5 (a-b) Capital Grants

Expenditures by Sub-Appropriation	Actual 2007/08	Estimate 2007/08		Variance Over (Under)	Expl. No.
	\$000	FTE	\$000	\$000	
Universities	24,214.7		9,903.8	14,310.9	1
Colleges	1,816.8		1,816.8	0.0	
<b>Total Sub-Appropriation</b>	<b>26,031.5</b>	<b>0.00</b>	<b>11,720.6</b>	<b>14,310.9</b>	

1. *Over expenditure relates to an outstanding loan to the University of Winnipeg, converted to a grant at year-end as per current accounting policy, additional approved capital grant funding to assist universities and colleges with upgrades for science labs, security enhancements, trades expansion, and the University of Winnipeg Opportunities Fund.*



# Costs Related to Capital Assets

This main appropriation provides for the costs related to capital assets.

## 6 (a) Desktop Services

Expenditures by Sub-Appropriation	Actual 2007/08	Estimate 2007/08		Variance Over (Under)	Expl. No.
	\$000	FTE	\$000	\$000	
Amortization Expense - Transition	19.0		19.0	0.0	
Enterprise Software Licenses	8.2		8.2	0.0	
<b>Total Sub-Appropriation</b>	<b>27.2</b>	<b>0.00</b>	<b>27.2</b>	<b>0.0</b>	

## 6 (b) Amortization Expense

Expenditures by Sub-Appropriation	Actual 2007/08	Estimate 2007/08		Variance Over (Under)	Expl. No.
	\$000	FTE	\$000	\$000	
Amortization Expense	190.0		172.1	17.9	
<b>Total Sub-Appropriation</b>	<b>190.0</b>	<b>0.00</b>	<b>172.1</b>	<b>17.9</b>	

## 6 (c) Interest Expense

Expenditures by Sub-Appropriation	Actual 2007/08	Estimate 2007/08		Variance Over (Under)	Expl. No.
	\$000	FTE	\$000	\$000	
Interest Expense	90.3		86.5	3.8	
<b>Total Sub-Appropriation</b>	<b>90.3</b>	<b>0.00</b>	<b>86.5</b>	<b>3.8</b>	



## **PART B – CAPITAL INVESTMENT**



## Capital Investment

The Province implemented a new accounting policy for tangible capital assets in 1999/2000 based on standards issued by the Canadian Institute of Chartered Accountants. These standards require that expenditures on tangible assets be amortized over the useful life of the asset. Recognizing amortization in this way allocates the cost of capital assets to the periods of service provided and amortization is recorded as an expense in the statement of operations.

Tangible capital assets are those with a useful life extending beyond one year which are acquired, constructed or developed and held for use, not for resale. Tangible capital assets with a value less than the accepted capitalization limit will be expensed in the year of acquisition.

### Advanced Education and Literacy

Expenditures by Sub-Appropriation	Actual	Estimate		Variance	Expl. No.
	2007/08 \$000	FTE	2007/08 \$000	Over (Under) \$000	
Capital Investment	138.9		150.0	(11.1)	
<b>Total Sub-Appropriation</b>	<b>138.9</b>		<b>150.0</b>	<b>(11.1)</b>	



# Financial Information



**Department of Advanced Education and Literacy**

**Reconciliation Statement  
(\$000s)**

<b>DETAILS</b>	<b>2007/08 ESTIMATES</b>
<b>2007/08 Main Estimates</b>	<b>\$539,723.7</b>
Main Estimates Authority Transferred from:	
- Enabling Appropriations re:	
• University Operating Grants	157.8
• General Salary Increase	11.1
• Purchase of capital asset (amortization and interest expense)	23.3
<b>2007/08 Estimate</b>	<b>\$539,915.9</b>

**Manitoba Advanced Education and Literacy  
Expenditure Summary**

For the fiscal year ended March 31, 2008, with comparative figures for the previous fiscal year (\$000s)

Estimate 2007/08	Appropriation	Actual 2007/08	Actual 2006/07	Increase (Decrease)	Explanation Number
<b>Advanced Education and Literacy (44)</b>					
	44-1 Administration and Finance				
42.1	(a) Minister's Salary	42.1	30.3	11.8	1
	(b) Executive Support				
444.1	- Salaries and Employee Benefits	434.0	391.9	42.1	
98.0	- Other Expenditures	90.2	82.7	7.5	
	(c) Policy and Planning Branch				
224.1	- Salaries and Employee Benefits	150.3	194.6	(44.3)	2
70.5	- Other Expenditures	49.1	61.5	(12.4)	3
750.0	(d) Administration and Finance	750.0	750.0	0.0	
1,628.8	Total 44-1	1,515.7	1,511.0	4.7	

**Manitoba Advanced Education and Literacy  
Expenditure Summary**

For the fiscal year ended March 31, 2008, with comparative figures for the previous fiscal year (\$000s)

Estimate 2007/08	Appropriation	Actual 2007/08	Actual 2006/07	Increase (Decrease)	Explanation Number
	44-2 Support for Universities and Colleges				
	(a) Council on Post-Secondary Education				
806.0	- Salaries and Employee Benefits	888.6	822.8	65.8	
535.5	- Other Expenditures	467.8	542.8	(75.0)	
328,399.0	(b) University Operating Grants	331,458.6	307,389.9	24,068.7	4
5,896.1	(c) Post-Secondary Strategic Initiatives Fund	1,840.0	500.0	1,340.0	5
68,984.4	(d) College Grants	69,401.9	65,111.6	4,290.3	6
32,557.5	(e) College Expansion Initiative	44,317.5	29,398.7	14,918.8	7
7,608.9	(f) Access Program	7,680.8	7,170.9	509.9	
3,994.3	(g) Advanced Education and Training Assistance	3,881.3	3,439.7	441.6	
	(h) Stevenson Aviation Centre				
1,547.2	- Salaries and Employee Benefits	1,347.3	1,300.3	47.0	
(1,547.2)	- Less: Recoverable from Red River College	(1,347.3)	(1,300.3)	(47.0)	
448,781.7	Total 44-2	459,936.5	414,376.4	45,560.1	

**Manitoba Advanced Education and Literacy  
Expenditure Summary**

For the fiscal year ended March 31, 2008, with comparative figures for the previous fiscal year (\$000s)

Estimate 2007/08	Appropriation	Actual 2007/08	Actual 2006/07	Increase (Decrease)	Explanation Number
	44-3 Manitoba Student Aid				
3,623.1	(a) - Salaries and Employee Benefits	3,852.6	3,738.3	114.3	
1,220.0	(b) - Other Expenditures	1,766.6	1,190.6	576.0	8
3,336.0	(c) - Loans and Bursaries	2,665.9	2,555.1	110.8	
8,260.0	(d) - Manitoba Bursary Fund	8,260.0	8,060.0	200.0	
5,000.0	(e) - Manitoba Scholarship and Bursary Initiative	5,000.0	4,911.6	88.4	
12,785.5	(f) - Canada Millennium Scholarship Fund	11,599.7	11,546.6	53.1	
3,000.2	(g) - Canada Study Grants	2,208.9	2,381.7	(172.8)	
13,874.3	(h) - Tuition Rebate Grants	12,918.6	13,239.3	(320.7)	
2,891.3	(i) - Medical Student/Resident Financial Assistance	3,151.3	2,886.3	265.0	
4,761.0	(j) - Loan Portfolio Administration	3,793.2	3,651.0	142.2	
1,388.6	(k) - Interest Relief and Debt Reduction	206.3	239.9	(33.6)	
2,000.0	(l) - Manitoba Graduate Scholarships	2,000.0	1,357.5	642.5	9
(2,891.3)	(m) - Less: Recoverable from Health	(3,151.3)	(2,886.3)	(265.0)	
59,248.7	Total 44-3	54,271.8	52,871.6	1,400.2	

**Manitoba Advanced Education and Literacy**

**Expenditure Summary**

For the fiscal year ended March 31, 2008, with comparative figures for the previous fiscal year (\$000s)

Estimate 2007/08	Appropriation	Actual 2007/08	Actual 2006/07	Increase (Decrease)	Explanation Number
44-4 Adult Learning and Literacy					
744.4	- Salaries and Employee Benefits	871.3	832.6	38.7	
405.9	- Other Expenditures	399.5	313.8	85.7	10
15,017.1	- Adult Learning Centres	14,867.7	14,203.5	664.2	
2,059.6	- Other Grants	2,061.6	1,640.5	421.1	11
18,227.0	Total 44-4	18,200.1	16,990.4	1,209.7	

**Manitoba Advanced Education and Literacy  
Expenditure Summary**

For the fiscal year ended March 31, 2008, with comparative figures for the previous fiscal year (\$000s)

Estimate 2007/08	Appropriation		Actual 2007/08	Actual 2006/07	Increase (Decrease)	Explanation Number
	44-5	Capital Grants				
9,903.8	(a)	Universities	24,214.7	17,394.9	6,819.8	12
1,816.8	(b)	Colleges	1,816.8	1,816.8	0.0	
11,720.6		Total 44-5	26,031.5	19,211.7	6,819.8	

**Manitoba Advanced Education and Literacy  
Expenditure Summary**

For the fiscal year ended March 31, 2008, with comparative figures for the previous fiscal year (\$000s)

Estimate 2007/08	Appropriation	Actual 2007/08	Actual 2006/07	Increase (Decrease)	Explanation Number
	44-6 Costs Related to Capital Assets				
	(a) Desktop services				
19.0	- Amortization Expense - Transition	19.0	19.0	0.0	
8.2	- Enterprise Software Licenses	8.2	7.8	0.4	
172.1	(b) Amortization Expense	190.0	172.1	17.9	
86.5	(c) Interest Expense	90.3	95.7	(5.4)	
285.8	Total 44-6	307.5	294.6	12.9	
539,892.6	<b>Total - Advanced Education and Literacy</b>	560,263.1	505,255.7	55,007.4	

**Manitoba Advanced Education and Literacy  
Expenditure Summary**

For the fiscal year ended March 31, 2008 with comparative figures for the previous fiscal year (\$000s)

---

Explanation Number:

1. Increased expenditure reflects costs for the Minister's Salary based on the formula established by the Pay Commissioner.
2. Decreased expenditure reflects a part-year vacancy in 2007/08 as the incumbent was appointed on an acting basis to a position external to the branch, and other minor variances.
3. Decreased expenditure reflects a decrease in branch activity in 2007/08 resulting in a reduction in costs for professional services, transportation and other minor variances.
4. Increased expenditure reflects a 7% increase in approved funding for 2007/08, and tuition compensation payments budgeted in the Post-Secondary Strategic Initiatives Fund (44-2C) but paid to universities from University Operating Grants in 2007/08, partly offset by an interest adjustment in 2007/08 related to an outstanding loan to the University of Winnipeg
5. Increased expenditure reflects funding for new programs approved for 2007/08.
6. Increased expenditure reflects a 7% increase in approved funding for 2007/08 and tuition compensation payments budgeted in the Post-Secondary Strategic Initiatives Fund (44-2C) but paid to colleges from College Grants in 2007/08.
7. Increased expenditure relates to outstanding loans to Red River College and to Assiniboine Community College, converted to grants in 2007/08 as per current accounting policy, and to an increase in approved funding for nursing and other college programming in 2007/08.
8. Increased expenditure is mainly due to costs in 2007/08 for the write-off of BSI assets which are no longer in use.
9. Increased expenditure reflects approved 2007/08 funding for the Manitoba Graduate Scholarship Program.
10. Increased expenditure mainly reflects approved 2007/08 funding for the Adult Literacy Strategy.
11. Increased expenditure mainly reflects approved funding for 2007/08 paid to Literacy programs.
12. Increased expenditure reflects additional approved capital grant funding in 2007/08 to assist universities and colleges with upgrades for science labs, security enhancements, trades expansion, the University of Winnipeg Opportunities Fund and other miscellaneous projects, the conversion of an outstanding loan to the University of Winnipeg to a grant in 2007/08 as per current accounting policy, and an increase in approved funding for minor capital requirements at the University College of the North, partly offset by additional funding in 2006/07 for the University of Winnipeg Science Complex, and for costs related to capital projects at the University of Manitoba and the University of Winnipeg which were completed in 2006/07.

**Manitoba Advanced Education and Literacy  
Revenue Summary by Source**

For the fiscal year ended March 31, 2008, with comparative figures for the previous fiscal year (\$000s)

Actual 2006/07	Actual 2007/08	Increase (Decrease)	Source	Actual 2007/08	Estimate 2007/08	Variance	Expl. No.
TAXATION							
0.0	0.0	0.0	Total	0.0	0.0	0.0	
OTHER REVENUE							
48.0	54.7	6.7	Fees	54.7	55.0	(0.3)	
974.6	1,416.9	442.3	Sundry	1,416.9	970.0	446.9	1
1,022.6	1,471.6	449.0	Total	1,471.6	1,025.0	446.6	
GOVERNMENT OF CANADA							
11,711.6	11,764.7	53.1	Canada Millennium Scholarship Awards	11,764.7	12,915.5	(1,150.8)	2
487.2	1,435.4	948.2	Canada Student Loan Act Service Fee	1,435.4	560.0	875.4	3
2,381.7	2,208.9	(172.8)	Canada Study Grants	2,208.9	3,000.2	(791.3)	4
14,580.5	15,409.0	828.5	Total	15,409.0	16,475.7	(1,066.7)	
15,603.1	16,880.6	1,277.5	<b>Total – Advanced Education and Literacy</b>	16,880.6	17,500.7	(620.1)	

**Manitoba Advanced Education and Literacy  
Revenue Summary by Source**

For the fiscal year ended March 31, 2008, with comparative figures for the previous fiscal year (\$000s)

---

Explanation Number:

1. **Sundry:** \$ 442.3 over 2006/07 Actual  
\$ 446.9 over 2007/08 Estimate

Increase mainly relates to Interest Revenue on Class B Manitoba Student Loans due to increases in the average lending rate for 2007/08 and in the volume of loans in repayment.

Increase relates to Interest Revenue on Class B Manitoba Student Loans due to an increase in the average lending rate and an increase in the volume of loans in repayment, and other minor variances.

2. **Canada Millennium Scholarship Awards:** \$ 1,150.8 under 2007/08 Estimate

Decrease reflects fewer awards than anticipated for the Adult Learner Bursary/Manitoba Millennium Opportunity Grants.

3. **Canada Student Loan Act Service Fee:** \$ 948.2 over 2006/07 Actual  
\$ 875.4 over 2007/08 Estimate

Increase mainly reflects additional funding received from the Federal Government in 2007/08 for program costs incurred in the 2004/05, 2005/06, and 2006/07 program years, an increase in the Canada Student Loan Program Administration Fee for 2007/08, and 2007/08 salary reimbursement for the development of the Data Modelling Tool in excess of the 2006/07 reimbursement.

Increase reflects additional funding from the Federal Government for program costs incurred in the 2004/05, 2005/06, and 2006/07 program years, and salary reimbursement for the development of the Data Modelling Tool, partly offset by other minor variances.

4. **Canada Study Grants:** \$ 791.3 under 2007/08 Estimate

Decrease reflects fewer applications for financial assistance than budgeted for the current program year.

**Manitoba Advanced Education and Literacy**  
**Five Year Expenditure and Staffing Summary by Main Appropriation**

For the fiscal years ended March 31, 2003 to March 31, 2008

Main Appropriation	2003/04		2004/05		2005/06		2006/07		2007/08	
	FTE	\$000	FTE	\$000	FTE	\$000	FTE	\$000	FTE	\$000
44-1 Administration and Finance	8.00	1,681.0	10.00	1,584.4	10.00	1,503.9	10.00	1,511.0	10.00	1,515.7
44-2 Support for Universities and Colleges	34.50	364,766.9	33.50	377,489.5	33.50	389,497.8	33.50	414,376.4	33.50	459,936.5
44-3 Manitoba Student Aid	71.25	50,235.1	67.25	49,844.0	65.25	50,151.5	65.25	52,871.6	65.25	54,271.8
44-4 Adult Learning and Literacy	8.00	15,504.8	9.00	16,283.2	9.00	17,270.3	9.00	16,990.4	10.00	18,200.1
<b>Sub-total</b>	<b>121.75</b>	<b>432,187.8</b>	<b>119.75</b>	<b>445,201.1</b>	<b>117.75</b>	<b>458,423.5</b>	<b>117.75</b>	<b>485,749.4</b>	<b>118.75</b>	<b>533,924.1</b>
44-5 Capital Grants		17,220.6		33,086.2		24,598.0		19,211.7		26,031.5
44-6 Costs Related to Capital Assets		339.6		278.1		305.0		294.6		307.5
<b>Total - Advanced Education and Training</b>	<b>121.75</b>	<b>449,748.0</b>	<b>119.75</b>	<b>478,565.4</b>	<b>117.75</b>	<b>483,326.5</b>	<b>117.75</b>	<b>505,255.7</b>	<b>118.75</b>	<b>560,263.1</b>

\* Historical actual expenditures have been adjusted to reflect program transfers between departments, to facilitate year over year comparison.



# Performance Reporting

The following section provides information on key performance measures for the department for the 2007/08 reporting year. This is the third year in which all Government of Manitoba departments have included a Performance Measurement section, in a standardized format, in their Annual Reports.

Performance indicators in departmental Annual Reports are intended to complement financial results and provide Manitobans with meaningful and useful information about government activities, and their impact on the province and its citizens.

For more information on performance reporting and the Manitoba government, visit [www.manitoba.ca/performance](http://www.manitoba.ca/performance)

Your comments on performance measures are valuable to us. You can send comments or questions to [mbperformance@gov.mb.ca](mailto:mbperformance@gov.mb.ca).

<b>What is being measured and using what indicator? (A)</b>	<b>Why is it important to measure this? (B)</b>	<b>Where are we starting from (baseline measurements)? (C)</b>	<b>What is the 2007/2008 result (current year) or most recent available data? (D)</b>	<b>What is the trend over time? (E)</b>	<b>Comments/ Recent Actions/Report Links (F)</b>
1. Access to education and training by measuring the enrollments in universities, colleges, adult learning centres and adult literacy programming.	Formal education and training is a primary means by which adult Manitobans learn. Education is strongly correlated with economic and social benefits for individuals and society. Recent estimates by Human Resources and Social Development Canada (HRSDC) indicate that in the future, 70 percent of all new jobs in Canada will require some form of post-secondary education and 25 percent will require a university degree. Participation in	Historical enrolment at universities, colleges, Adult Learning Centres (ALCs) and literacy programming.  1999/00 University enrolment <sup>1</sup> Full time 22,410 Part time <u>8,255</u> Total 30,665	Enrolment in Manitoba's universities in 2007/08 and colleges in 2006/07  2007/08 University enrolment <sup>1</sup> Full time 30,490 Part time <u>9,820</u> Total 40,310	Increase  University Total Enrolment – between 1999/2000 and 2007/08 full and part-time enrolment increased by 31.5% at Manitoba's universities for both graduate and undergraduate students.	Between 1999/00 and 2006/07, Aboriginal college enrolment increased by 44.0%.  Within the university and college enrolments are students enrolled in special ACCESS programs, which provide post-secondary educational opportunities to Manitoba residents from under-represented groups.  There were 3,187 new students enrolled in Manitoba's ACCESS Programs between 1999/00 and 2007/08, an average of 354 new students per year.

<sup>1</sup> Includes undergraduate and graduate students in regular session only (September to April)

<b>What is being measured and using what indicator? (A)</b>	<b>Why is it important to measure this? (B)</b>	<b>Where are we starting from (baseline measurements)? (C)</b>	<b>What is the 2007/2008 result (current year) or most recent available data? (D)</b>	<b>What is the trend over time? (E)</b>	<b>Comments/ Recent Actions/Report Links (F)</b>
	university, college, adult learning centres and literacy programming is one key measure of access to learning opportunities.	1999/00 College enrolment Full time 10,452 Part time <u>597</u> Total 11,049	2006/07 College enrolment <sup>2</sup>  Full time 13,251 Part time <u>1,961</u> Total 15,212	College Enrolment - between 1999/00 to 2006/07, Manitoba's colleges have experienced a 37.2% regular day and apprenticeship enrollment increase.	In April 2008, Government announced the appointment of a one-person commission to review the provincial policy on accessibility, affordability and excellence.
		2003/04 Adult Learning Centres Total number of learners attending ALCs: 9,715 Course credits: 12,258	2006/07 Adult Learning Centres <sup>3</sup> Total number of learners registered in ALCs: 8,300 Course credits: 11,170	Slight decrease	Although there has been a slight downward trend in total numbers of learners, there has also been a trend toward increased completion of credits. The number of incomplete credits decreased at ALCs by 23% from 2003/04.  ALCs are an important vehicle for access to education, particularly for Aboriginal Manitobans. In 2006/07, 37.4% of ALC learners and 32% of adult literacy learners self-identified as Aboriginal.

<sup>2</sup> Includes regular programs and apprenticeship. Does not include continuing education, distance education and contract training. College figures are for 2006/07, as 2007/08 data are not yet available due to the continuous intake of students during the year (July to June).

<sup>3</sup>This is the most current year for which data is available, as data is collected for the school year (July to June). Year end statistics for 2007/08 will be available in fall 2008.

<b>What is being measured and using what indicator? (A)</b>	<b>Why is it important to measure this? (B)</b>	<b>Where are we starting from (baseline measurements)? (C)</b>	<b>What is the 2007/2008 result (current year) or most recent available data? (D)</b>	<b>What is the trend over time? (E)</b>	<b>Comments/ Recent Actions/Report Links (F)</b>
		2003/04 Total number of learners attending adult literacy programming: 2,443	2006/07 Adults in literacy programming Total number of learners attending literacy programming: 2,589	Stable	In 2007/08, government passed a new Adult Literacy Act, effective January 1, 2009. The Adult Literacy Act requires the development of a provincial adult literacy strategy to address the needs of Manitobans.
2. Affordable education by measuring the cost of post-secondary education to students, uptake of government student loans and bursaries and the debt load of students accessing financial assistance.	The cost of post-secondary education to students is a key indicator of affordability of post-secondary education.	Tuition Fees paid by students at Manitoba public post-secondary institutions for the 1999/00 academic year.  1999/00 University tuition weighted average for Arts and Sciences was \$3,192  College tuition in 1999/00 un-weighted average was \$1,435	Tuition Fees paid by students at Manitoba's public post-secondary institutions for the 2007/08 academic year.  2007 University tuition weighted average for Arts and Sciences was \$3,086  2007 College tuition un-weighted average was \$1,292	Stable  In 2000/01, tuition fees were reduced at the public post-secondary institutions by 10% and have remained at that level since then.	Manitoba's University tuition is the third lowest in the country, after Quebec and Newfoundland. (Source: Statistics Canada) Manitoba's College tuition is the lowest in Canada, excluding Quebec, which does not charge tuition fees for attending the CEGEPs.  In April 2008, the Government announced that the tuition fee policy will continue for the 2008/09 fiscal year. Beginning in 2009/10, tuition will be permitted to rise gradually to the 1999/00 levels while guarding against rate shock.  Since 2000/01, the Government has

<b>What is being measured and using what indicator? (A)</b>	<b>Why is it important to measure this? (B)</b>	<b>Where are we starting from (baseline measurements)? (C)</b>	<b>What is the 2007/2008 result (current year) or most recent available data? (D)</b>	<b>What is the trend over time? (E)</b>	<b>Comments/ Recent Actions/Report Links (F)</b>
	<p>Providing financial assistance to students increases accessibility to post-secondary education and increases the chance of successful completion.</p>	<p>1999/00 – Number of Students Served</p> <ul style="list-style-type: none"> <li>- Canada Student Loans 10,328</li> <li>- Manitoba Student Loans 10,112</li> <li>- Canada Millennium Scholarship Bursaries 3,516</li> <li>- 2000/01 Manitoba Bursaries 1,961</li> </ul>	<p>2006/07 - Number of Students Served</p> <ul style="list-style-type: none"> <li>- Canada Student Loans 8,531</li> <li>- Manitoba Student Loans 7,196</li> <li>- Canada Millennium Scholarship Bursaries 2,239</li> <li>- Manitoba Bursaries 2,224</li> </ul>	<p>Decrease</p>	<p>provided tuition rebate grants to compensate the post-secondary institutions for providing students with a 10% tuition fee reduction. Tuition rebate grants totaled \$13.1 million in 2005/06, \$13.2 million in 2006/07, and \$12.9 million in 2007/08.</p> <p>Student loan uptake in Manitoba has decreased in recent years due, in part, to the fact that tuition in Manitoba is among the lowest in Canada. Additionally, students in Manitoba have a relatively low cost of living and display a greater propensity to save and pay for their post-secondary education than students in other jurisdictions.</p> <p>As well as student loans, \$33.3 M was available in the form of non-repayable assistance in 2006/07.</p> <p>In 2006/07, the Manitoba Bursary was increased by \$1.4M to</p>

<b>What is being measured and using what indicator? (A)</b>	<b>Why is it important to measure this? (B)</b>	<b>Where are we starting from (baseline measurements)? (C)</b>	<b>What is the 2007/2008 result (current year) or most recent available data? (D)</b>	<b>What is the trend over time? (E)</b>	<b>Comments/ Recent Actions/Report Links (F)</b>
	Student debt is kept to a minimum by providing a mix of loans, grants, bursaries, scholarships and other awards, student debt is kept to a minimum	1999/00 Average Debt Levels after remission - Students in last year of a Four Year University Program \$18,744 <sup>4</sup> - Students in last year of any program \$12,555	2006/2007 Average Debt Levels after remission  - Students in last year of a Four Year University Program \$19,368 <sup>4</sup> - Students in last year of any program \$13,249	Slight increase	<p>\$8.16M. Originally implemented in 2000/01 with a \$5.9M allocation, the Manitoba Bursary has been very successful in keeping student debt at manageable levels.</p> <p>In 2008/09, the Government announced that the Manitoba Bursary will receive an increase of \$8M over the next three years beginning in 2009/10 doubling its support to \$16M.</p> <p>The Manitoba Bursary works in conjunction with the Canada Millennium Scholarship Bursary. Together, the bursaries keep Manitoba student debt levels at the second lowest in Canada. Only Quebec has lower student debt levels.</p> <p>After several years of declining debt levels this slight increase, due to the increase in loan limits and the relaxation of the expected parental contributions to</p>

<sup>4</sup>Excludes professional programs

<b>What is being measured and using what indicator? (A)</b>	<b>Why is it important to measure this? (B)</b>	<b>Where are we starting from (baseline measurements)? (C)</b>	<b>What is the 2007/2008 result (current year) or most recent available data? (D)</b>	<b>What is the trend over time? (E)</b>	<b>Comments/ Recent Actions/Report Links (F)</b>
					<p>student loans, can be expected to continue.</p> <p>In Fall 2006, the Government announced a 60% income tax rebate for graduates of recognized post-secondary institutions after January 2007. The rebate can be claimed over a period of time between six and twenty-five years, to a maximum of \$25.0 by graduates who live and pay taxes in Manitoba.</p>
<p>3. Student success in education and training by measuring graduations/ credentials received from universities, colleges, adult learning centres and goals reached through literacy programming.</p>	<p>To fully realize the benefits of education and adult learning, it is important that individuals are able to successfully complete programs.</p> <p>Numbers of individuals achieving various education credentials and goals is one way to measure this.</p>	<p>1999 University Graduates<sup>5</sup>            Bachelor Degree: 4,460            Master's Degree: 578            Doctoral Degree: 67            Medicine &amp; Dentistry: 121            Certificate/Diploma: <u>215</u>            Total 5,441</p> <p>1999 College Graduates<sup>5</sup>            Diploma 1,279            Certificate <u>1,578</u>            Total 2,857</p>	<p>2007 University Graduates (preliminary)<sup>5</sup>            Bachelor Degree: 5,644            Master's Degree: 753            Doctoral Degree: 98            Medicine &amp; Dentistry 148            Certificate/Diploma: <u>281</u>            Total 6,924</p> <p>2007 College Graduates<sup>5</sup>            Diploma: 1,697            Certificate: <u>2,237</u>            Total 3,934</p>	<p>Increase</p> <p>From 1999 to 2007, the total number of university degrees granted increased 27.3%</p> <p>From 1999 to 2007, the number of college graduates (diploma and certificate) increased 37.9%</p>	<p>In 2007/08, \$2.0M was available in Graduate Scholarships to support 104 Masters students and 60 PhD students.</p>

<sup>5</sup>University and College graduates are reported in the calendar year of graduation. College graduates include those from regular day programs and full-time regional centre programs (apprenticeship is not included).

<b>What is being measured and using what indicator? (A)</b>	<b>Why is it important to measure this? (B)</b>	<b>Where are we starting from (baseline measurements)? (C)</b>	<b>What is the 2007/2008 result (current year) or most recent available data? (D)</b>	<b>What is the trend over time? (E)</b>	<b>Comments/ Recent Actions/Report Links (F)</b>
		2003/04 Adult Learning Centres Course credits: 12,258 High School Diploma: 1,254	2006/07 Adult Learning Centres Course credits: 11,170 High School Diploma: 1,260	Stable	Some ALC learners may wish to take one or more courses, but may not intend to complete a diploma. The number of incomplete credits decreased at ALCs by 23% from 2003/04, indicating that learners are completing courses for which they register in a timely fashion.
		2003/04 ALC Graduation rate <sup>6</sup> : 12.9%	2006/07 ALC Graduation rate <sup>6</sup> : 15%	Stable	Between 2003/04 and 2006/07, the average number of credits taken per ALC learner remained relatively stable. During the same time period, graduation rates slightly improved.  Note: In 2006/07, 419 graduates from ALCs self declared as Aboriginal.
		2003/04 Adult Literacy programming, 24.7% of adult literacy learners went on to further education/training	In 2006/07 Adult Literacy programming, 87% of learners increased their literacy skill level. In addition, 15.8% of adult literacy learners went on to further education/training.	Stable	Adult Literacy programming addresses the literacy, numeracy, and communication skills barriers that prevent adults from accessing further education/training.

<sup>6</sup>ALC graduation rates are a ratio of grads to all ALC learners and are typically lower than overall graduation rates of sequential learners given the high proportion of ALC learners who are part-time, completing a diploma over several years as well as those whose learning objectives may not be completion of a diploma but rather courses towards employment or further education.

<b><i>What is being measured and using what indicator? (A)</i></b>	<b><i>Why is it important to measure this? (B)</i></b>	<b><i>Where are we starting from (baseline measurements)? (C)</i></b>	<b><i>What is the 2007/2008 result (current year) or most recent available data? (D)</i></b>	<b><i>What is the trend over time? (E)</i></b>	<b><i>Comments/ Recent Actions/Report Links (F)</i></b>
<p>4. Our capacity to meet the evolving skills requirements of the labour market by measuring employment outcomes of university and college graduates.</p>	<p>Many education and training programs and activities support the development of a skilled workforce. Some of these are formal programs and others are non-formal (e.g. literacy/Essential Skills programming).</p>	<p>While some university and college programs are intended to lead more directly to employment, employment outcomes of all graduates are important to measure.</p> <p>Statistics Canada's National Graduate Survey followed up the graduates of 2000 in 2002 to determine employment rates. Ninety percent of Manitoba graduates were employed.</p>	<p>A survey of 2007 university and college graduates is under way.</p>	<p>Not available – pending results of 2007 graduate survey</p>	<p>Within university and college programs, a number of special ACCESS programs are focused on areas of labour market demand. Of ACCESS program graduates in 2007, 85% were either employed or continuing their education. Of employed graduates, 72% were working in areas related to their field of study.</p> <p>The employment rates for ACCESS Program graduates are impressive from a national perspective. For example, of 150 Aboriginal engineers in Canada, approximately one-third are graduates of the Engineering ACCESS program at the University of Manitoba.</p> <p>Another area where actions are being taken to meet labour market needs concerns new immigrants. As an example, in 2007/08, the Government supported the continuation and</p>

<b>What is being measured and using what indicator? (A)</b>	<b>Why is it important to measure this? (B)</b>	<b>Where are we starting from (baseline measurements)? (C)</b>	<b>What is the 2007/2008 result (current year) or most recent available data? (D)</b>	<b>What is the trend over time? (E)</b>	<b>Comments/ Recent Actions/Report Links (F)</b>
					<p>expansion of the Internationally Educated Engineers Qualification (IEEQ) Program which previously had been a pilot project. A commitment was made to provide \$1,039,200 for a four-year period ending in 2010/2011 to enable the program to expand capacity from 10-12 students per year to enrollment of 40.</p> <p>Adult learning opportunities are also relevant to meeting the evolving skill requirements of the labour market. Many participants in ALCs and Adult Literacy programming are employed full or part-time while attending:</p> <ul style="list-style-type: none"> <li>• Employed learners attending ALCs: 44%</li> <li>• Employed learners attending Literacy programming: 36%</li> </ul>

<b>What is being measured and using what indicator? (A)</b>	<b>Why is it important to measure this? (B)</b>	<b>Where are we starting from (baseline measurements)? (C)</b>	<b>What is the 2007/2008 result (current year) or most recent available data? (D)</b>	<b>What is the trend over time? (E)</b>	<b>Comments/ Recent Actions/Report Links (F)</b>
<p>5. Capacity at post-secondary institutions by looking at provincial funding provided to the post-secondary institutions (operating and capital)</p> <p>Operating grants</p>	<p>It is important to measure the level of investment in universities and colleges.</p> <p>The operating and capital financing provided to universities and colleges in a fiscal year is intended to allow the universities and colleges to operate in such a way that they will not incur any operating deficit in that year.</p>	<p>Operating and Capital grant funding provided to colleges and universities in 1999/00.</p> <p>Operating grant funding to Manitoba's public universities in 1999/00 was \$215.0 million.</p> <p>Manitoba's public Colleges (including UCN) received \$61.9 million in 1999/00 in operating grants.</p>	<p>Operating and Capital grant funding provided to colleges and universities in 2007/08.</p> <p>Operating grant funding provided to universities (excluding the University College of the North (UCN)) was \$307.1 million in 2007/08.</p> <p>Operating grant funding provided to colleges (including UCN) was \$86.5 million in 2007/08.</p> <p>When combined with funding for the College Expansion Initiative, the total funding is \$119.0</p>	<p>Increase</p> <p><u>Operating Funds</u> Since 1999/00, the operating grant funding to Manitoba's public universities (excluding University College of the North - UCN) has increased by \$83.9 million or 39.0% over the 1999/2000 approved funding levels (after funding transfers have been excluded). When the property tax savings projected to 2006 are factored in, the increased resources for universities is 46.2%.</p> <p>Since 1999/2000, the operating grant funding to Manitoba colleges (including UCN) has increased by \$22.5 million or 35.8% over the 1999/2000 approved funding levels. When</p>	<p>Since 2006/07, government has exceeded its three-year funding commitment towards the operating grants for universities and colleges, including the College Expansion Initiative and ACCESS Programs, by providing increases of 5.8% in 2006/07, 7% in 2007/08 and 7% in 2008/09. In 2007/08, the Government invested \$2.5 million for security enhancements at universities and colleges.</p> <p>In 2007/08, the Government provided \$4.2 million to modernize laboratories and upgrade laboratory equipment at Brandon University, University of Winnipeg, and University of Manitoba.</p> <p>Between 1999/2000 and 2007/08, funding to the post-secondary system including operating, capital, CEI, tuition rebate grants and all other funding increased by 51.5%.</p>

<i>What is being measured and using what indicator? (A)</i>	<i>Why is it important to measure this? (B)</i>	<i>Where are we starting from (baseline measurements)? (C)</i>	<i>What is the 2007/2008 result (current year) or most recent available data? (D)</i>	<i>What is the trend over time? (E)</i>	<i>Comments/ Recent Actions/Report Links (F)</i>
Capital		In 1999/00, universities and colleges received \$13.2 million in capital funding.	million in 2007/08.  Capital grant funding provided to Manitoba's public universities and colleges was \$20.7 million in 2007/08.	combined with the increased funding under the College Expansion Initiative, the total increase to college funding is \$54.7 million or 87.2% since 1999/2000.  <u>Capital Funds</u> Since 1999/00, Government has supported \$478.1 million in capital investment at post-secondary institutions. The support of capital investment has been provided by Manitoba Advanced Education and Literacy (\$439.0 million) and Manitoba Infrastructure and Transportation (\$39.1 million).	Recent government-funded capital projects include:  University of Winnipeg – funds toward construction of the Richardson College for the Environment (\$10 million) , plus a matching fundraising campaign over the next three years (\$15 million)  University of Manitoba – the Government announced in April 2008, that it will invest \$47 million in Project Domino over the next three years, including \$4 million in 2008/09  University College of the North The Pas Campus– development of a resource library for teaching and research

<b><i>What is being measured and using what indicator? (A)</i></b>	<b><i>Why is it important to measure this? (B)</i></b>	<b><i>Where are we starting from (baseline measurements)? (C)</i></b>	<b><i>What is the 2007/2008 result (current year) or most recent available data? (D)</i></b>	<b><i>What is the trend over time? (E)</i></b>	<b><i>Comments/ Recent Actions/Report Links (F)</i></b>
					<p>and a student services centre, plus funding for completion of The Pas Recreation Centre, in joint agreement between the town of The Pas and UCN (\$17 million)</p> <p>Thompson Campus – construction of a new campus in Thompson (\$27 million) and funding to ensure energy efficient facilities (\$3 million)</p> <p>Red River College – funds toward construction of the Heavy Equipment Training Centre (\$12.6 million)</p>



# The Public Interest Disclosure (Whistleblower Protection) Act



*The Public Interest Disclosure (Whistleblower Protection) Act* came into effect in April 2007. This law gives employees a clear process for disclosing concerns about significant and serious matters (wrongdoing) in the Manitoba public service, and strengthens protection from reprisal. The Act builds on protections already in place under other statutes, as well as collective bargaining rights, policies, practices and processes in the Manitoba public service.

Wrongdoing under the Act may be: contravention of federal or provincial legislation; an act or omission that endangers public safety, public health or the environment; gross mismanagement; or, knowingly directing or counseling a person to commit a wrongdoing. The Act is not intended to deal with routine operational or administrative matters.

A disclosure made by an employee in good faith, in accordance with the Act, and with a reasonable belief that wrongdoing has been or is about to be committed is considered to be a disclosure under the Act, whether or not the subject matter constitutes wrongdoing. All disclosures receive careful and thorough review to determine if action is required under the Act, and must be reported in a department's annual report in accordance with Section 18 of the Act.

The following is a summary of disclosures received by Manitoba Advanced Education and Literacy for fiscal year 2007 – 2008:

<p align="center"><b>Information Required Annually (per Section 18 of The Act)</b></p>	<p align="center"><b>Fiscal Year 2007 – 2008</b></p>
<p>The number of disclosures received, and the number acted on and not acted on. <i>Subsection 18(2)(a)</i></p>	<p align="center"><b>NIL</b></p>
<p>The number of investigations commenced as a result of a disclosure. <i>Subsection 18(2)(b)</i></p>	<p align="center"><b>NIL</b></p>
<p>In the case of an investigation that results in a finding of wrongdoing, a description of the wrongdoing and any recommendations or corrective actions taken in relation to the wrongdoing, or the reasons why no corrective action was taken. <i>Subsection 18(2)(c)</i></p>	<p align="center"><b>NIL</b></p>



# Appendices



**Table 1  
Student Aid Program Awards  
August 1, 2007 to July 31, 2008**

Total Award Amounts																
Institution	No. of Students with Processed Applications*	No. of Students Receiving Awards*	CSL	MSL	PWPA	AB	CSG	CAG	ALB	MMOG LI	MMOG AB	MSRFAP	Total	CMSB	MB	Total CMSB/MB
University of Manitoba	3,942	3,231	14,495,217	7,827,872	68,600	1,020,759	648,513	493,801	95,500	226,939	134,597	2,545,000	27,556,798	4,320,829	1,691,971	6,012,800
College St. Boniface	133	120	491,534	235,702	3,200	0	15,061	22,166	0	10,342	0	0	778,005	146,586	14,850	161,436
Red River College	1,490	1,103	4,456,105	2,267,175	24,800	314,156	296,941	136,537	56,500	38,562	85,273	0	7,676,049	828,762	837,150	1,665,912
University of Winnipeg	1,242	954	3,894,407	1,875,727	18,600	382,045	250,596	176,410	42,000	57,384	23,256	0	6,720,425	1,015,438	194,411	1,209,849
Assiniboine Community College	287	227	836,732	453,787	5,200	0	127,981	61,766	5,000	19,088	9,069	0	1,518,623	166,861	91,614	258,475
Brandon University	616	539	2,567,087	1,391,385	17,000	118,491	109,660	65,366	7,000	37,563	12,346	0	4,325,898	972,956	122,324	1,095,280
University College of the North	80	58	252,702	108,769	6,200	44,434	27,461	2,443	5,000	0	10,461	0	457,470	44,578	21,760	66,338
Other Manitoba Public Institutions	160	180	712,375	388,747	2,200	0	49,796	15,606	0	0	0	0	1,168,724	0	164,749	164,749
Other In-Province	1,269	948	5,439,814	3,263,097	27,800	0	323,186	73,984	0	37,003	10,891	0	9,175,775	432,541	3,266,219	3,698,760
Canada	1,361	1,146	7,096,502	4,038,223	13,400	0	119,727	127,660	0	79,510	12,917	480,000	11,967,939	2,671,449	1,738,485	4,409,934
Elsewhere	295	268	2,065,913	1,324,510	200	0	14,226	14,133	0	0	0	20,000	3,438,982	0	116,467	116,467
<b>Total</b>	<b>10,875</b>	<b>8,774</b>	<b>42,308,388</b>	<b>23,174,994</b>	<b>187,200</b>	<b>1,879,885</b>	<b>1,983,148</b>	<b>1,189,872</b>	<b>211,000</b>	<b>506,391</b>	<b>298,810</b>	<b>3,045,000</b>	<b>74,784,688</b>	<b>10,600,000</b>	<b>8,260,000</b>	<b>18,860,000</b>

**Number of Students Receiving Awards**

Institution	CSL	MSL	PWPA	AB	CSG	CAG	ALB	MMOG LI	MMOG AB	MSRFAP	CMSB	MB
University of Manitoba	3,174	2,736	343	136	352	284	22	153	54	142	1,176	386
College St. Boniface	116	90	16	0	10	13	0	7	0	0	45	4
Red River College	1,062	800	124	45	185	87	13	29	31	0	237	205
University of Winnipeg	927	723	93	34	140	106	11	47	8	0	286	66
Assiniboine Community College	206	180	26	0	45	41	1	15	7	0	55	38
Brandon University	529	474	85	13	73	43	2	28	6	0	266	39
University College of the North	52	36	31	9	20	2	1	0	7	0	14	8
Other Manitoba Public Institutions	170	86	8	0	17	9	0	0	0	0	0	42
Other In-Province	943	902	142	0	207	32	0	15	3	0	106	535
Canada	1,133	1,037	67	0	56	60	0	38	4	24	574	251
Elsewhere	265	254	1	0	10	5	0	0	0	1	0	18
<b>Total</b>	<b>8,577</b>	<b>7,318</b>	<b>936</b>	<b>237</b>	<b>1,115</b>	<b>682</b>	<b>50</b>	<b>332</b>	<b>120</b>	<b>167</b>	<b>2,759</b>	<b>1,592</b>

\* Numbers do not include MSRFAP students

CSL - Canada Student Loans (full and part time) - up to \$210/week

MSL - Manitoba Student Loans - up to \$140/week

PWPA - Prince of Wales and Princess Anne Awards - non-repayable, \$200 for Aboriginal students with at least \$1 assessed need

AB - Access Bursary - non-repayable, for students in the ACCESS program, replaces MSL

SML - Special Manitoba Loan - repayable assistance granted by the Appeal Committee

CSG - Canada Study Grants (full and part time) - non-repayable federal grants

CAG - Canada Access Grants - non-repayable federal grants

MALB - Millennium Adult Learner Bursary - non-repayable, for ALC graduates

MSRFAP - Medical Student/Resident Financial Assistance Program - conditional grants of \$15,000 and \$20,000 for medical students and residents, recoverable from the Department of Health

CMSB - Canadian Millennium Scholarship Bursary - used to remit loans, \$1000 to \$4500

MMOG LI - Millennium Manitoba Opportunity Grant for Low Income dependent students, up to \$3000 or 50% of tuition

MMOG AB - Millennium Manitoba Opportunity Grant for independent Aboriginal students, up to \$4000 or 100% of tuition